



Quick Start Workflow Labelfire. **Prinect Cockpit 2018.**



Table of Contents

Hotfolder Workflow with Labelfire 340

- Overview of the Hotfolder Workflow 4
- One or More Hotfolders? 4
- How to Prepare Your Hotfolder Workflow 5
 - Define color settings in advance 5
 - Create a Qualify sequence 5
 - Create a Prepare sequence 6
 - Create a PagePrint sequence 7
 - Settings for Source Profiles 9
 - Settings for Keep Black 9
 - Settings for Spot Colors 9
 - Create Group Sequence Templates 10
 - Create hotfolders 11
- Printing with a Hotfolder 12
 - Create a new print job 12
 - Check colors 12
 - Add the PagePrint sequence (only if working with one hotfolder) 12
 - Customize the PagePrint sequence if required. 13
 - Submit the print job 13
 - Info tool ("Color Picker") 14
 - Question and Answers 14

Overview of the Hotfolder Workflow

Documents to be printed:	Ready-for-press PDF with CMYK data and spot colors, based on a working color space, with the order of the printing unit colors defined (e.g. from ArtPro), 1ups and marks defined in the PDF
Workflow:	Automated output through hotfolder
Preparation:	<ol style="list-style-type: none">1. Create a Qualify sequence and a Prepare sequence2. Create PagePrint sequences for all output conditions3. Compile a group template from the sequences4. Create one or more hotfolders and assign the group template to the hotfolder with the help of an Assistant.
Workflow (see " Printing with a Hotfolder ", page 12):	<ol style="list-style-type: none">1. Copy the PDF file to the hotfolder2. Open the print job created as a result of this in the Prinect Cockpit3. When working with only one hotfolder: Add the PagePrint sequence matching the print job4. Check the print job and, if necessary, correct single settings5. Submit to the DFE (Digital Front End)

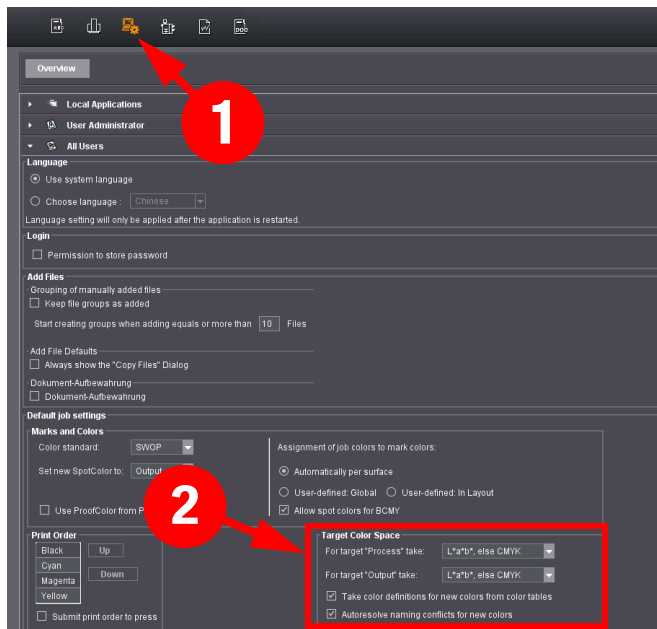
One or More Hotfolders?

Depending on your work environment, you can also create one or more hotfolders, for example, one for each customer or if the PagePrint sequences are to be already assigned to the hotfolders.

- When you are working with just one hotfolder, the PagePrint sequence must be assigned interactively during job processing.
- When you are working with several hotfolders, you can select a different PagePrint sequence for each hotfolder. By doing this, specific printing materials can already be assigned to the hotfolder or you can make a difference between a device-dependent and a device-independent workflow.
Device-dependent = color spaces in the PDF file are already prepared
Device-independent = color spaces in the PDF file must still be customized

How to Prepare Your Hotfolder Workflow

Define color settings in advance



We recommend that you define the color settings as a preference in the Princt Cockpit. The settings are then applicable for every new hotfolder job created.

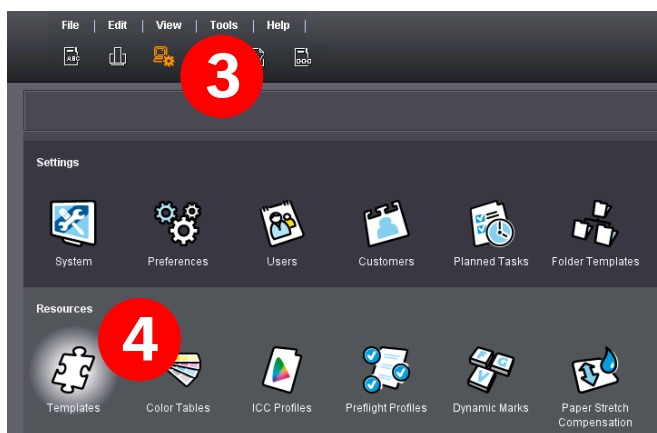
1. In the Princt Cockpit in "Administration" (1), click "Preferences".

2. Set the following data (2) for "Target Color Space" in "All Users":

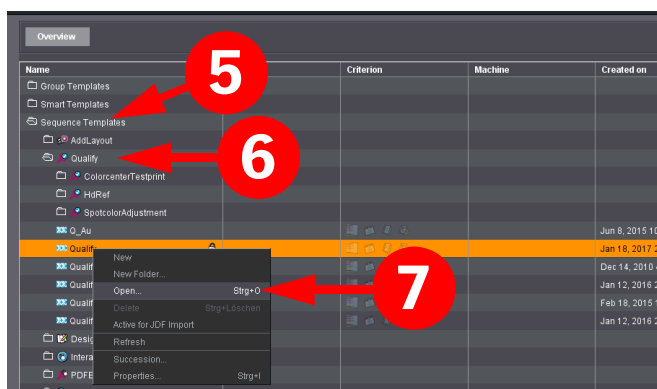
- "Process" target: L*a*b*, else CMYK
- "Output" target: L*a*b*, else CMYK
- "Take color definitions for new colors from color tables": enabled
- "Autoresolve naming conflicts for new colors": enabled

3. Save changes.

Create a Qualify sequence



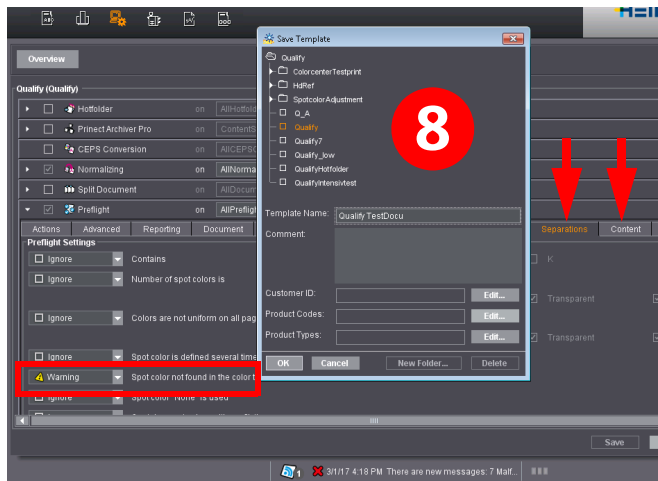
4. In the Princt Cockpit in "Administration" (3), click "Templates" (4).



5. Open "Sequence Templates" (5) and open the "Qualify" template type (6).

6. Open the Qualify sequence included in the shipment as a template (7).

Hotfolder Workflow with Labelfire 340



You can keep most of the default settings.

Recommendation:

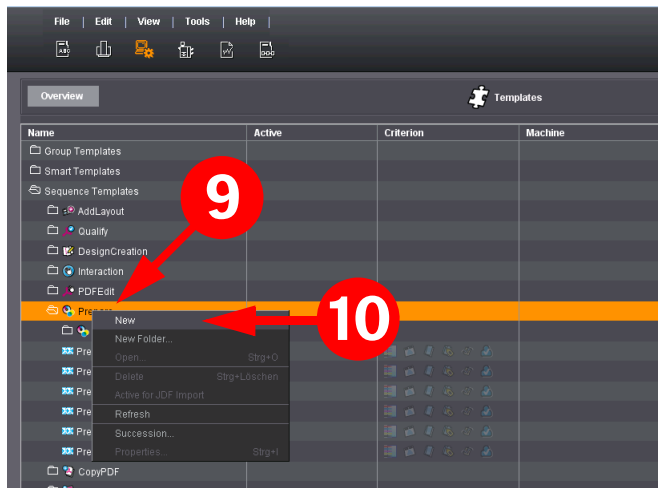
7. Edit the following settings:

"Preflight > Separations": enable Warning for "Spot color not found in the color tables"

"Preflight > Content": Disable "Change flatness to the..." and "Increase line weight to this value"

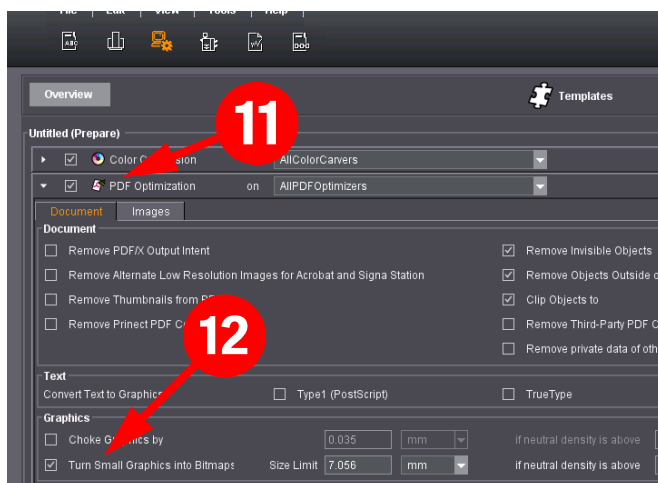
8. Save the sequence, giving it a new name (8).

Create a Prepare sequence



A Prepare sequence is needed if there are vectorized fonts in the print job. In the Prepare sequence, you can optimize printing of the outline fonts by an alternative Renderer process. If you don't use the sequence, the line weight of small fonts may become noticeably wider.

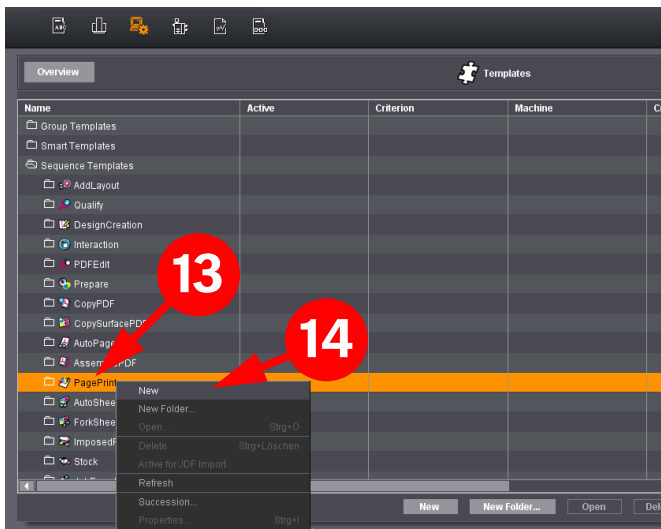
9. Open the "Prepare" sequence type (9) in "Sequence Templates" and create a new sequence (10).



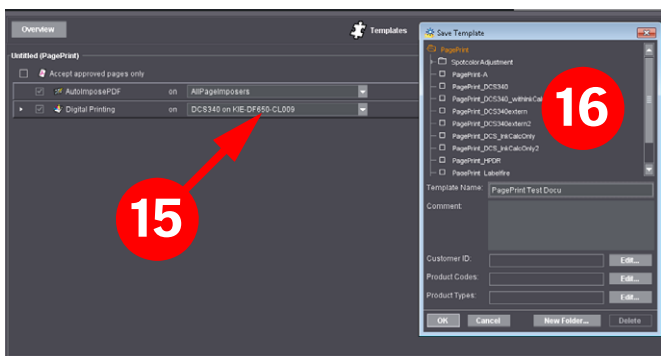
10. Enable "PDF Optimization" (11) and enable "Turn Small Graphics into Bitmaps" (12).

11. Save the new Prepare sequence.

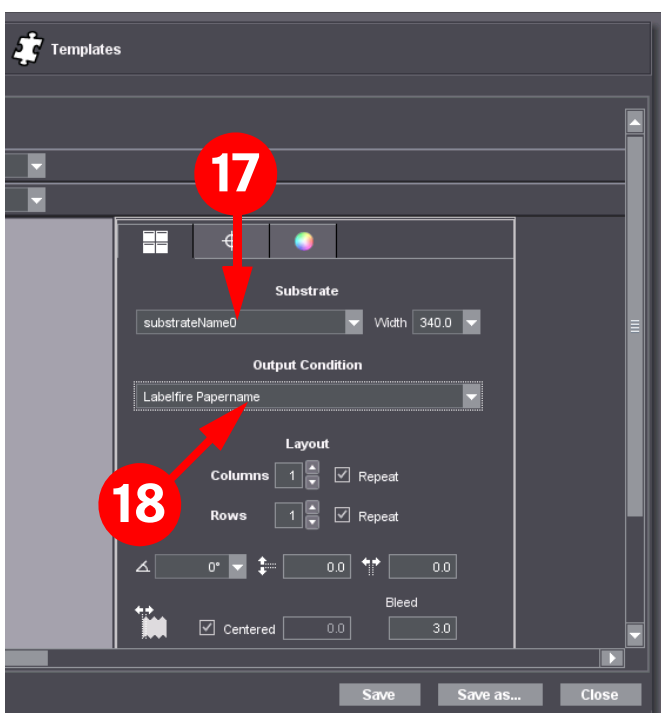
Create a PagePrint sequence



12. In "Administration", go to "Templates > Sequence Templates" and create a new sequence (14) in the "PagePrint" (13) sequence type.



13. Select the digital press (15) and save the sequence, giving it a new name (16).



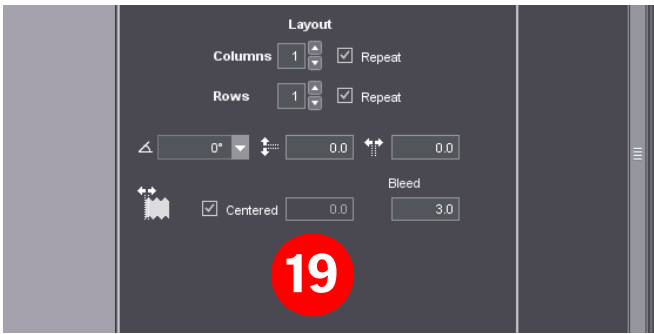
14. Open the digital print settings and first of all select the printing material (17).

i Note: The information about the available printing materials normally comes from the press.

15. Select the "output condition" (18) for this PagePrint sequence. Only the output conditions that were created for the selected printing material are listed.

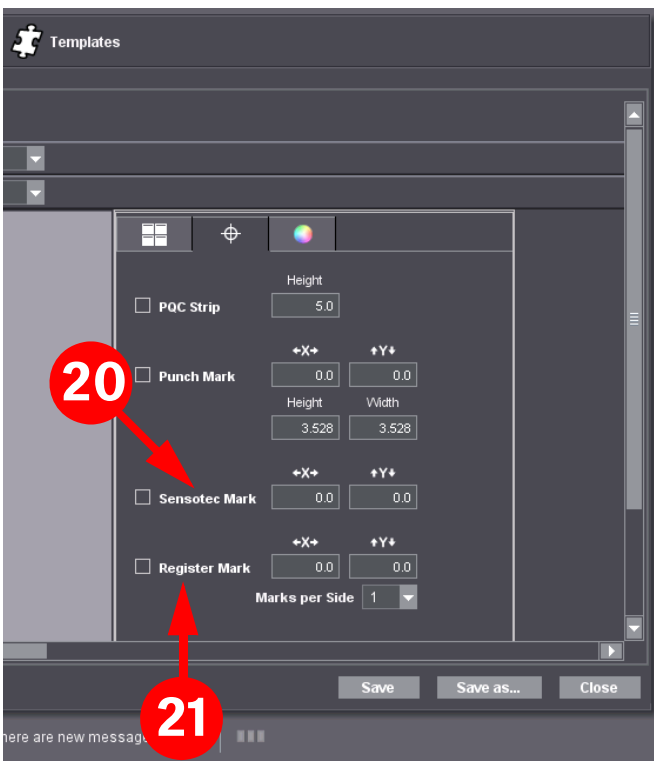
i Note: The output conditions are created with the Color Center and link the substrate data with a machine parameter set and all necessary information about color processing like, for example, ink limit, calibration and ICC profile. You can find more details about this in the Online Help of the Prinect Color Center.

Hotfolder Workflow with Labelfire 340



Several output conditions can be required, depending on the substrate, for example, multicolor (CMYK + orange, green, violet) without white, with flexo white and with digital white.

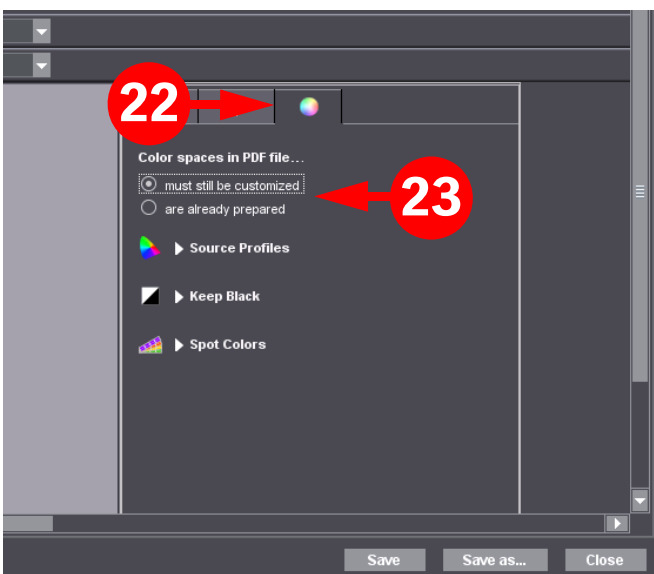
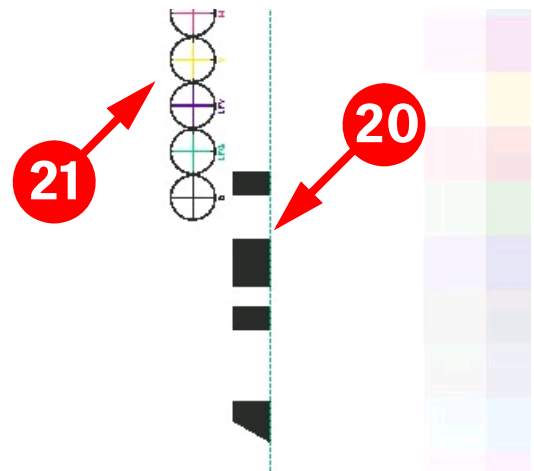
16. If necessary, change settings like orientation (if the PDF is rotated) or bleed (19).



17. In the "Marks" tab, enable the required marks if needed.

Sensotec Mark (20): if synchronization with the inline punch is necessary

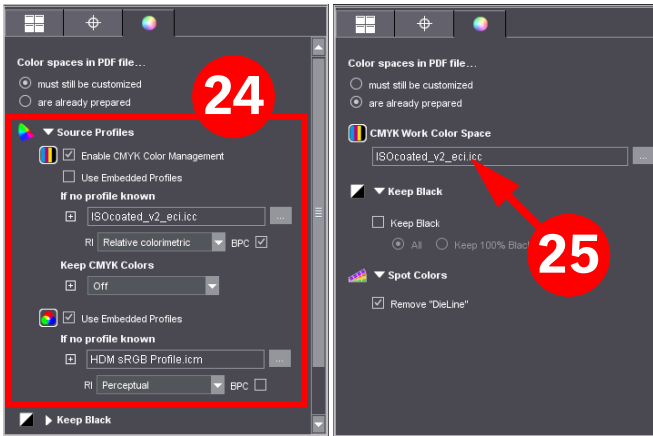
Register Mark (21): Mark made up of black circles and colored crosses corresponding to the target color space (e.g. 7 colored crosses with CMYKOGV).



18. In the "Color settings" tab (22), first decide what the color spaces of the PDF input files that are to be processed with this PagePrint sequence will be like (23):

- "Color spaces in PDF file must still be customized": Setting for documents with RGB images and/or CMYK objects that were not yet transformed to a uniform working color space
- "Color spaces in PDF file are already prepared": Setting for documents that were already created in the CMYK working color space or prepared for it. The data are mainly CMYK objects and spot colors with Lab or CMYK recipes (e.g. from ArtPro).

Settings for Source Profiles

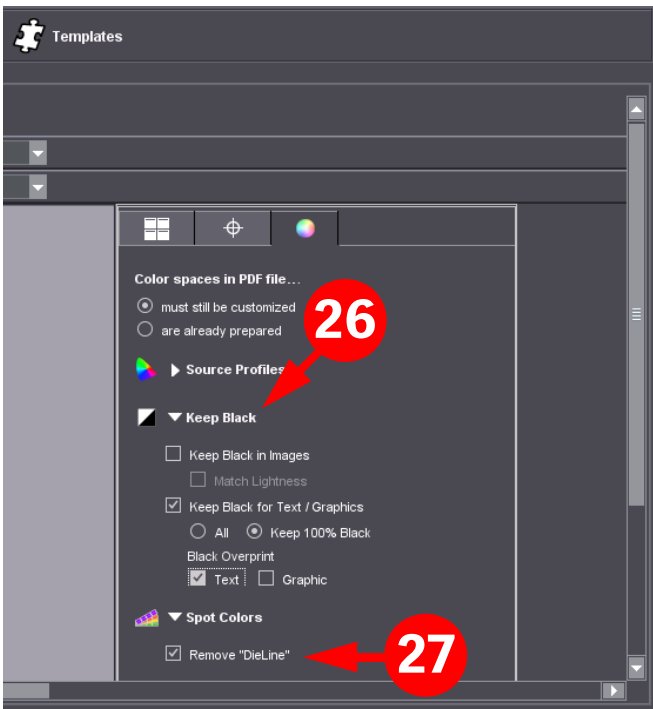


19. In "Source Profiles", you can define settings for color management to match the selection made in the previous step for color spaces of the input data:

- If the input data are not yet prepared, define the settings for the conversion from the source color space to the target color space separately for CMYK and RGB. (24)

- If the color spaces are already prepared: For the profile, you should always set the same working color space that is also set in the PDF applications or Art-Pro (default profile is "ISOCoated") (25). This enables spectral color management. Spectral color management makes it possible to have an optimized calculation for overprinting spot colors.

Settings for Keep Black



20. Set the most frequently used process for Keep Black as the default (26).

i Notes: You should enable "Keep 100% Black" if there are barcodes or black font in the print jobs.

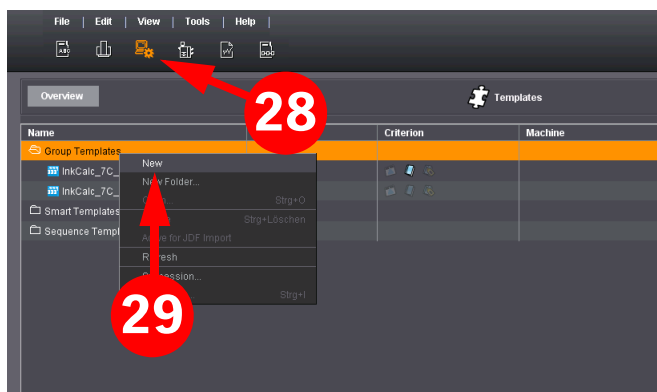
If the data are not yet customized, you must define Keep Black separately for images and text/graphics and, if necessary, set overprinting.

Settings for Spot Colors

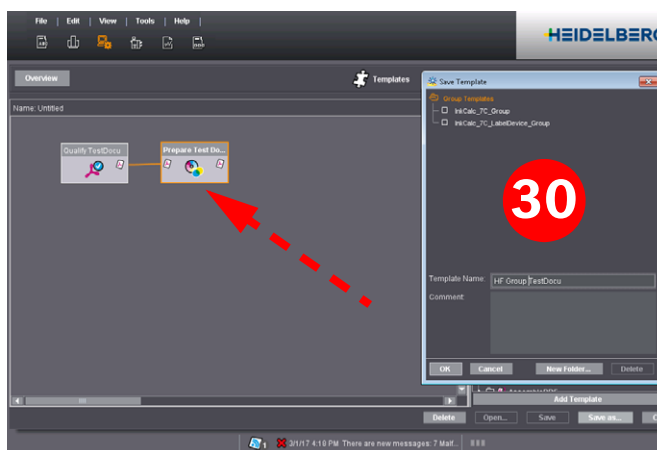
21. If necessary, enable "Remove "DieLine"" in "Spot Colors" (27).

22. Save the PagePrint sequence and create other PagePrint sequences if needed.

Create Group Sequence Templates

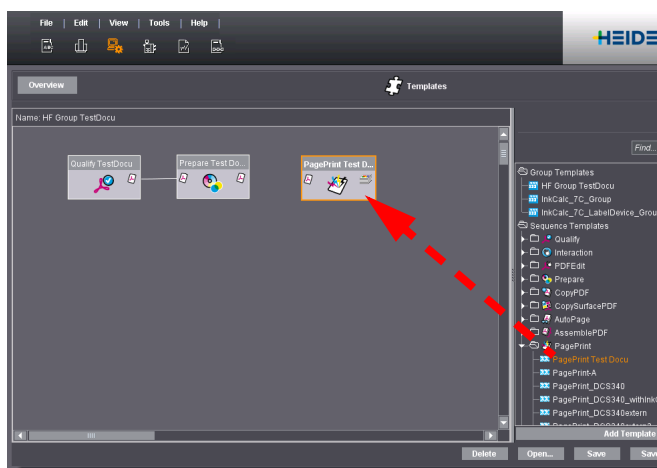


23. In "Administration" (28), create a new group template in "Templates > Group Templates" (29).



24. Drag the new Quality and Prepare sequence from the sequence templates to the group template and link them to each other.

25. Save the group template (30).



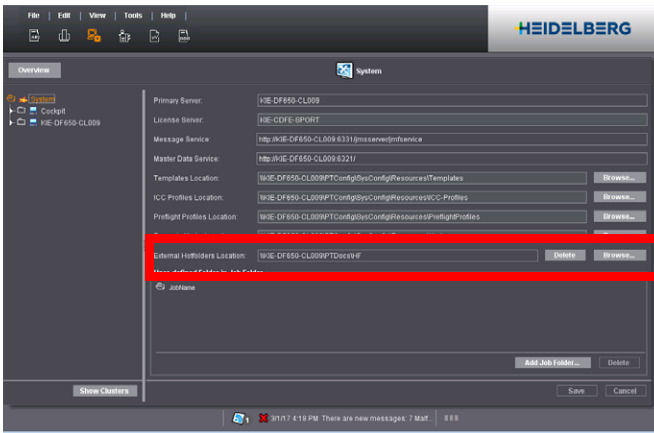
26. When working with several hotfolders: add the required PagePrint sequence.

i Note: Do not link the PagePrint sequence because interactive work is no longer possible if you do.

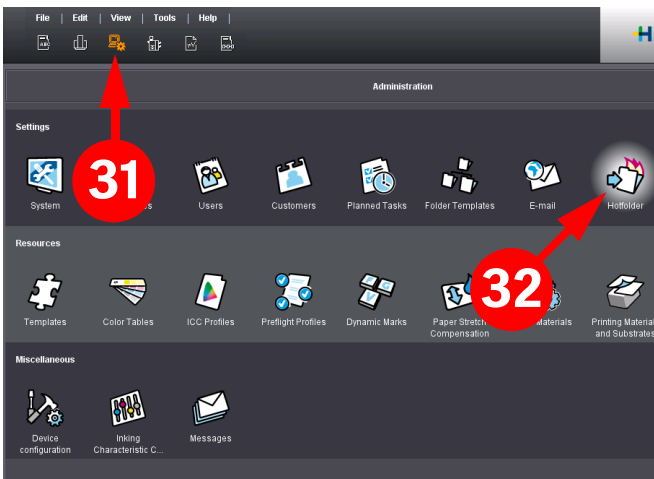
27. After you saved the data, create all other group templates needed.

i Note: When you are working with just one hotfolder, the PagePrint sequence you want is added only in the actual print job itself.

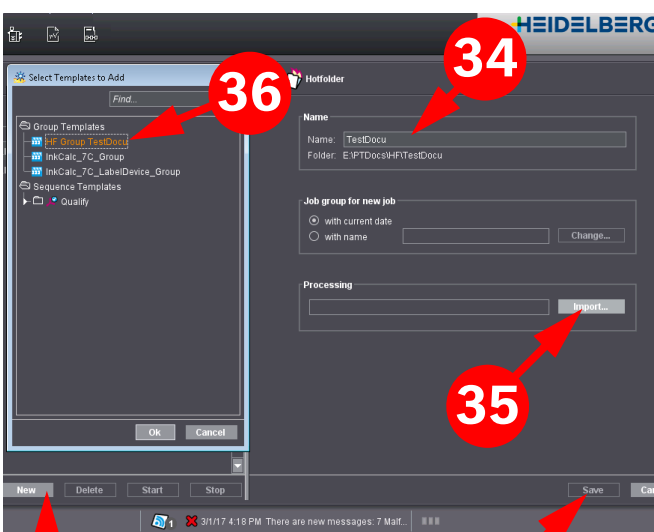
Create hotfolders



This requires that an external hotfolder path is set up ("Administration > System > System - External Hotfolders Location").



1. In "Administration" (31), click "Hotfolder" (32).



2. Click "New" (33) and enter the name of the hotfolder in "Name" (34).

Recommendation: When giving the hotfolder a name, be guided by the selected hotfolder variant. In the case of a hotfolder with a PagePrint sequence, the name should have a reference to the selected printing material/substrate.

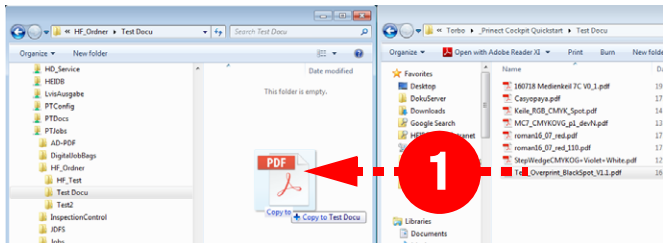
3. Click "Import" in "Processing" (35) and select one of the new group templates defined (36).

4. Save the hotfolder (37) and, if necessary, create more hotfolders.

Note: The new hotfolders are active directly after you create them.

Printing with a Hotfolder

Create a new print job

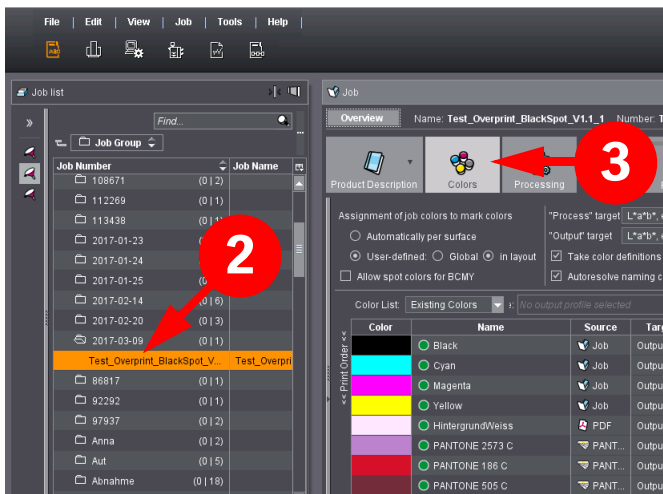


1. File the PDF file to be printed to the hotfolder.

In the Prinect Cockpit, a new job is created automatically in the folder set in the Qualify sequence.

The file is processed automatically, runs through the Qualify sequence and is removed from the hotfolder.

Check colors

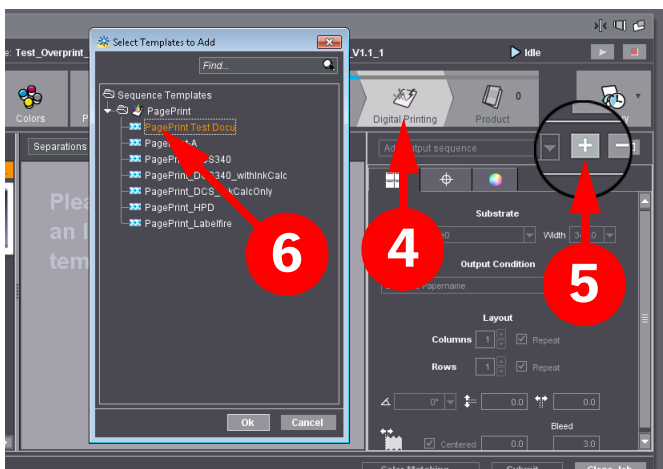


2. Select the job (2) and go to the list of colors (3).

3. Check the list of colors in the print job:

- Are all spot colors present?
- Were all the spot colors found in the color tables?
- Do all the spot colors have Lab recipes?
- Is white set to "Special, printing unit" as the usage and "Opaque" as the type?
- Is "Opaque & Ignore" or "Opaque" set for varnish and "Special, printing unit" as the usage?
- Is the order of the colors correct?

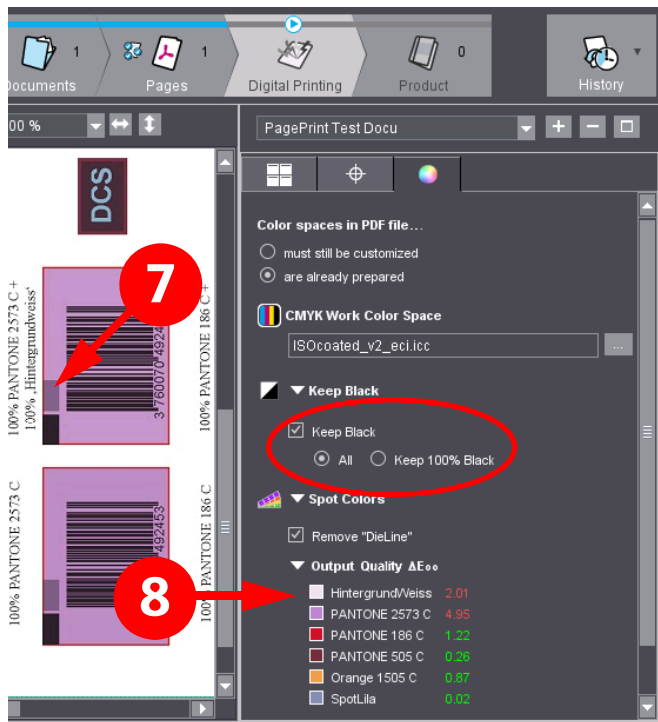
Add the PagePrint sequence (only if working with one hotfolder)



4. Go to the "Digital Printing" workflow step (4).

5. Click the plus button (5) and add the PagePrint sequence needed for this job (6).

Customize the PagePrint sequence if required.



6. If necessary, customize settings to this job individually.

Naturally, you can customize the settings of the Page-Print sequence for a specific job. For example, you may want different processing for "Keep Black":

Example: In addition to "Keep 100% Black" set in the sequence template for the reproduction of barcode and font, the gray box (7) should be printed using black defined in the PDF. For that reason, the setting was changed to "All" to allow the box set with 50% black to be also printed accordingly.

i Note: All the spot colors of the print job display in "Output Quality ΔE" together with their ΔE_{2000} deviation for output with the selected profile (8). The values are red as of a certain limit. In other words, this spot color will probably no longer be reproduced satisfactorily.

Submit the print job



7. If you are satisfied with the print job, you only have to click "Submit" (9) and set the data for the delivery quantity (10).

The print job is now sent to the Labelfire for output and waits to be printed.

Info tool ("Color Picker")



To check color reproduction, you can use the "Color Picker" (11): When the tool is selected, you can click an area and view the color defined in the PDF compared to the color to be printed. If an object has several layers, you can go one layer below each time by clicking the area again.

Example: Click the black box (12). You first view the values for black. With the next click, you view the values for the spot color and with the third click the values for background white that will be printed.

Question and Answers

What do I have to remember with a new print job?

Is the substrate already qualified? Can a new substrate be assigned to an existing substrate group?

- YES: The job is output on the known substrate = use the existing PagePrint sequence
- NO: The substrate must be qualified (with the Prinect Color Center); after that create a new PagePrint sequence
- Printing: Send the job to Prinect to the relevant hotfolder (see ["Printing with a Hotfolder", page 12](#))

I want to reprint a job that was already printed.

Is the job still in the Labelfire memory (HMI)?

- YES: The job is invoked again from the HMI UI of the Labelfire
- NO: If the job is still in the Prinect job list: Open the job and submit it to printing; otherwise send the job to Prinect to the relevant hotfolder

I am not happy with the quality of the printed spot colors

Is a measurable artwork available?

- YES: Start the "Color measuring" dialog in the job color table, copy the measured color with a suitable color name to the customer-specific color table.
- NO: Print variations and customize data through the "Spot Color Matching" dialog

<p>I want to print with digital white - what settings are necessary?</p>	<ul style="list-style-type: none"> • The output condition suitable for printing with white created and selected in the print job ("Digital Printing > Color settings > Output Condition") • Is white set to "Special, printing unit" as the usage and "Opaque" as the type in the list of colors?
<p>What do I have to remember for a multicolor output?</p>	<p>A suitable output condition created for Multicolor must be selected. Recommendation: When naming the output conditions, make sure that the colors can be easily identified. For example, AB1_CMYK, AB2_CMYKOGV_W.</p>
<p>The output condition I want does not appear in the list box.</p>	<p>Select a different printing material?</p>
<p>If we use "FOGRA37 as the "Simulation Profile", what happens then with the spot colors? Are they confined to FOGRA37 or to the available color space of the press?</p>	<p>The spot colors are not affected by the simulation profile if the color recipe is Lab. If the color recipe is CMYK, the simulation profile, in this case "FOGRA37", is viewed as the source profile. In other words, the influence is marginal in this case as well.</p>

Heidelberger Druckmaschinen AG

Kurfuersten-Anlage 52 - 60

69115 Heidelberg

Germany

Phone +49 6221 92-00

Fax +49 6221 92-6999

heidelberg.com

Copyright © 2017 Heidelberger Druckmaschinen AG.

No part of this book may be reproduced without prior written permission.

Important Notice:

We are dedicated to improving and enhancing our products. Consequently, the information in this manual is subject to technical modifications and other changes without notice. Heidelberger Druckmaschinen AG assumes no responsibility for information and description as far as third-party products are concerned.

The information contained in this manual about performance and speed as well as technical data concerning application of our products is not legally binding as it does not constitute a written contract of features. If any problems occur with the product described in this manual, please contact the Heidelberg agency which is responsible for you.

Revision 1.0

Version 2018

Impressum

Fonts: Heidelberg Antiqua MI, Heidelberg Gothic MI

Trademarks

Heidelberg, the Heidelberg logotype, Prinect, Suprasetter and Speedmaster are registered trademarks of Heidelberger Druckmaschinen AG in the United States and other countries.

Adobe and PostScript and Acrobat are either registered trademarks or trademarks of Adobe Systems Incorporated in the United States and/or other countries.

PANTONE and Hexachrome are registered trademarks of Pantone Inc.

All other trademarks are property of their respective owners.

Subject to technical modifications and other changes.