

Installation.

**Prinect Package Designer**

**As of Mediaset version 2021.10.30**

**or CR 55.0.4**



## Table of Contents

### Before you start ...

About This Documentation .....	5
What You Should Already Know .....	5
Typographical Conventions .....	5

### Installation

Prerequisites in the Prinect Environment .....	7
Installation .....	7
Prerequisites for running Prinect Package Designer .....	19
Modify, Repair or Remove Installation .....	21
Prinect Package Designer Server .....	24

## About This Documentation

This documentation applies to the installation of the software "Prinect Package Designer" as of Mediaset version 21.10.30 or as of Cloud Ready version 55.0.4.

## What You Should Already Know

We assume that you are familiar with the basic functions of Windows®/Apple® Macintosh® in a network environment.

## Typographical Conventions

The following typographical conventions are used in this manual:

- References to other chapters and sections are [blue](#) (on the screen) and underlined.

Example: See "[Typographical Conventions](#)", [page 5](#).

- Quotes are used to indicate menus, folders, names of functions, hardware conditions, switch settings, system messages, etc.

Example: Set the switch to "off".

- Menus, functions and sub-functions are separated by ">".

Example: Select "File > Open...".

- Keys which you should hold down simultaneously are connected with a plus character.

Example: Press "Alt + A".

# Prerequisites in the Prinect Environment

The following hardware and software prerequisites must be met:




[Online Help > Prinect Know How > Newsroom & Release Notes > Prinect System Technology.](#)

## Installation

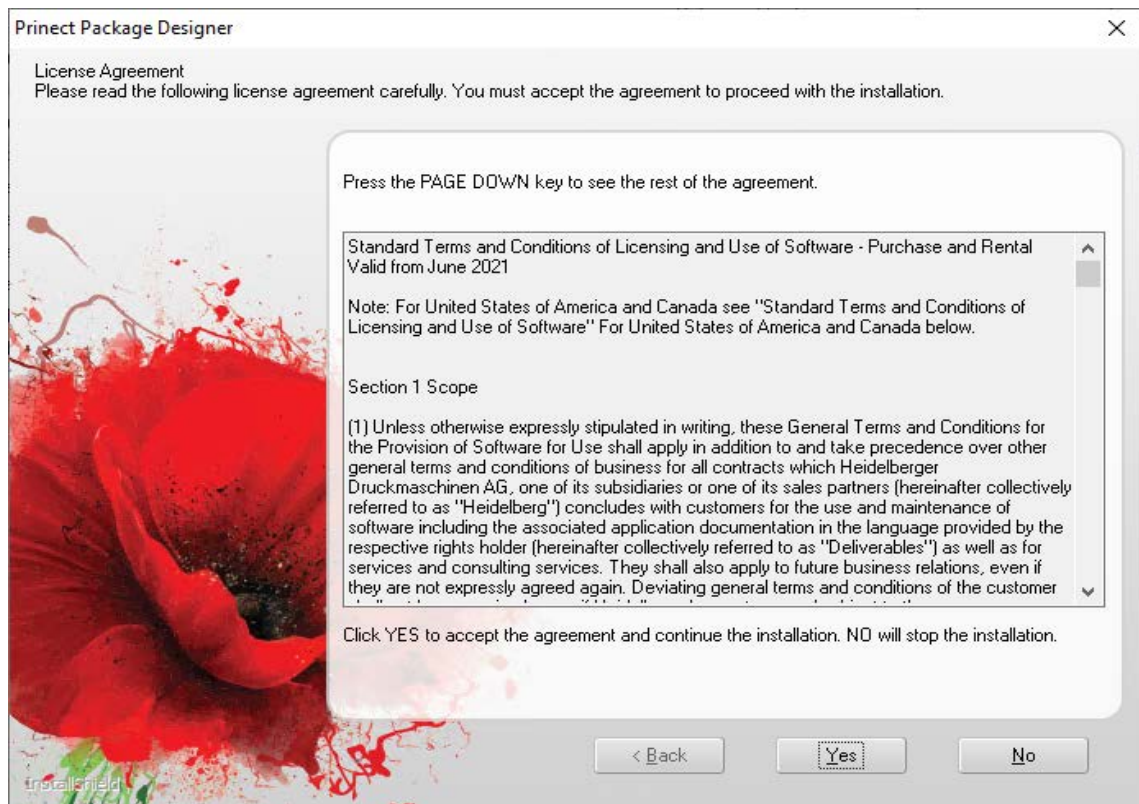
You need administrator permissions for the computer you want to install Prinect Package Designers on.

1. Folders "HDEnvironment" and "ServiceTools" as well as "PackagingSuiteSetup.exe" must be present in your installation folder.

Click "PackagingSuiteSetup.exe" to start installation.

 HDEnvironment	4/11/2023 9:10 AM	File folder	
 ServiceTools	4/11/2023 9:10 AM	File folder	
 PackagingSuiteSetup.exe	2/6/2023 1:07 PM	Application	734,041 KB

2. Confirm the license query with "Yes".

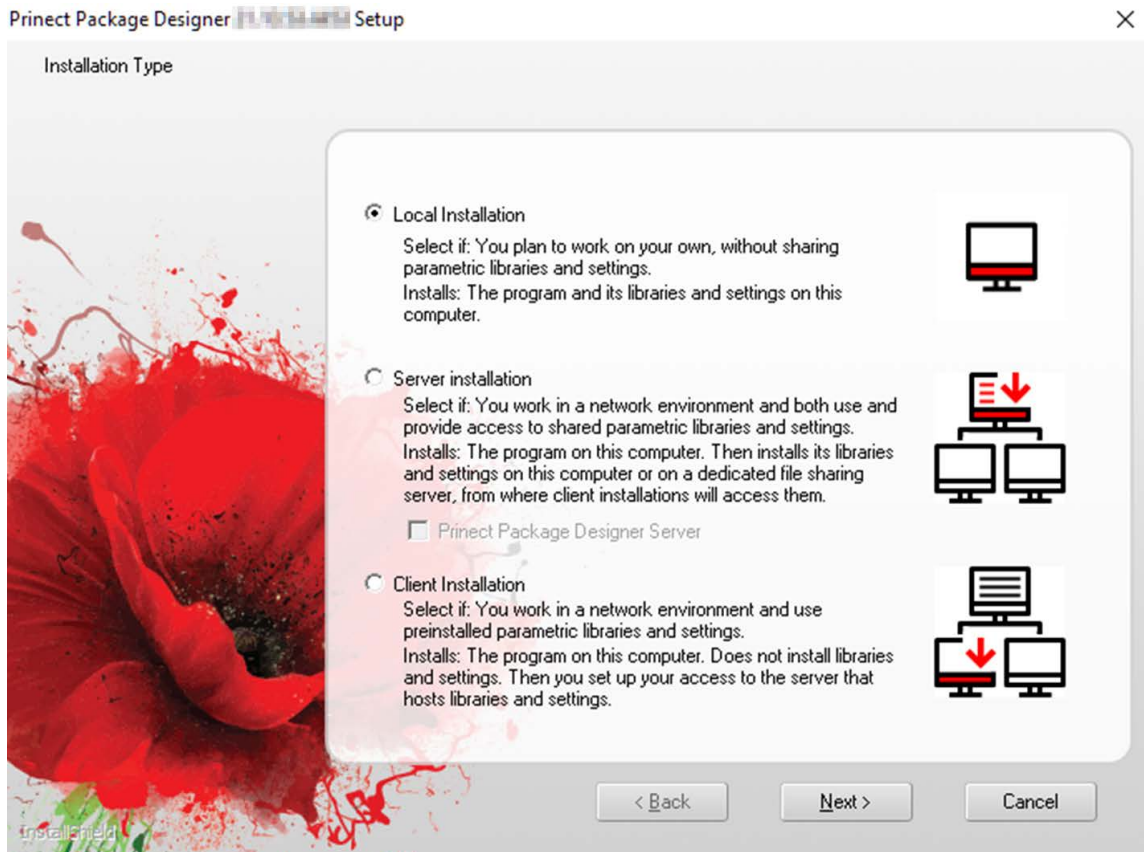


# Installation

3. Select the desired type of installation:

The option "Local Installation" is intended for a standard installation of the Prinect Package Designer.

The option "Server installation" with the "Prinect Package Designer Server" option enabled is intended for an integrated Prinect workflow (refer to [section "Prinect Package Designer Server", page 24](#)).



4. The Production Manager license always comprises the Synergy configuration. You can additionally purchase the Diemaker license and choose the configurations according to the purchased licenses as follows:

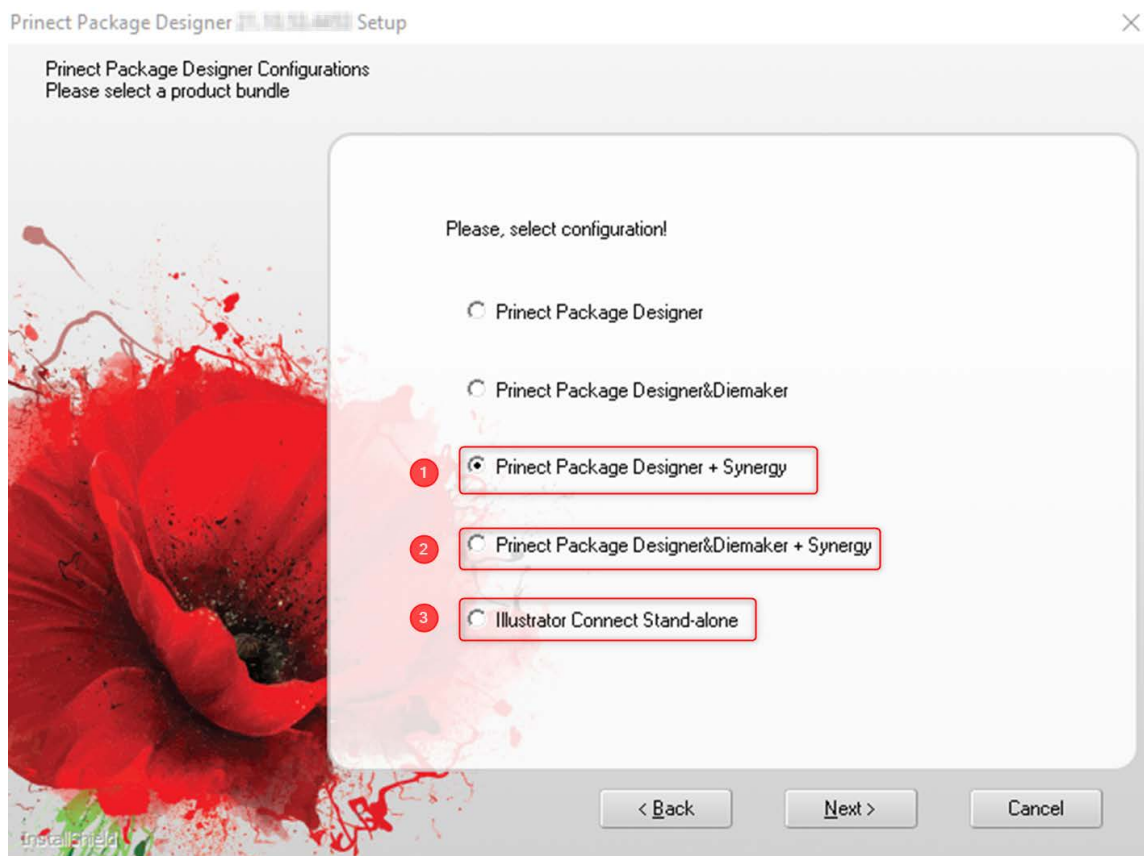
- [1] "Prinect Package Designer + Synergy": This the standard package covered by the Production Manager license without Diemaker.
- [2] "Prinect Package Designer & Diemaker + Synergy": This the standard package covered by the Production Manager license plus Diemaker.

- [3] Adobe Illustrator plugin:

The plugin is installed automatically if an Adobe Illustrator installation is found during installation.

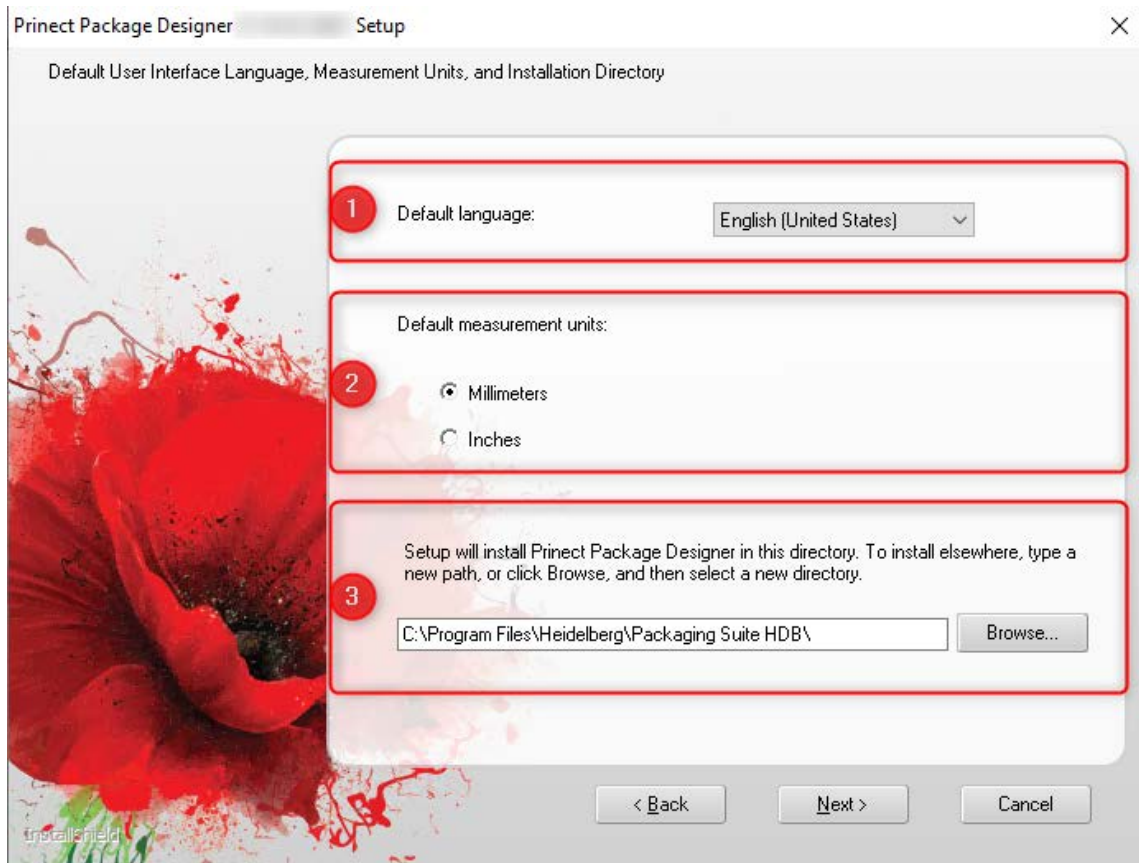
If there is no Adobe Illustrator at the time of PPD installation, the plugin can be installed later once the Adobe product has been added.

The plugin for Adobe Illustrator can also be operated outside of your own network. In this case, choose option [3] and install the plugin. This requires that Adobe Illustrator is installed on the computer.



# Installation

5. [1] Choose the default language in which Prinect Package Designer is to start.
- [2] Choose the default measurement units.
- [3] Click "Browse" to go to an alternative installation folder if desired.

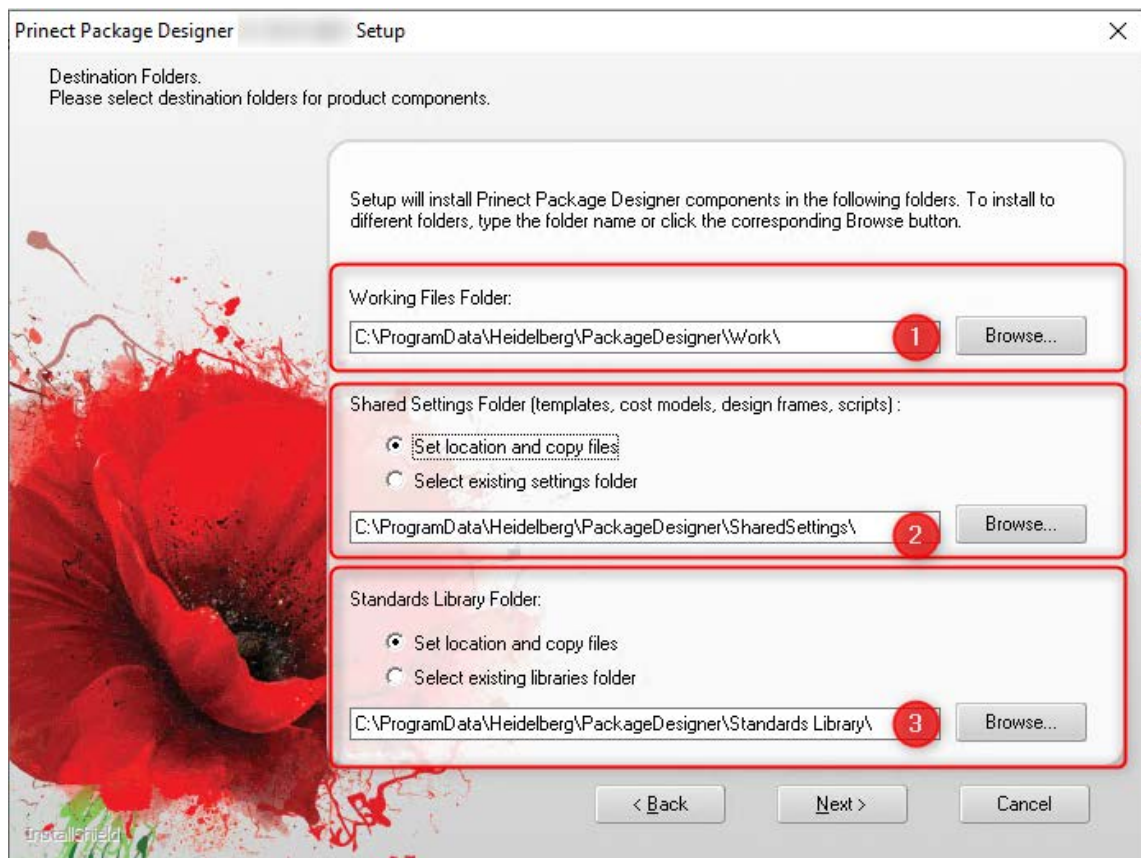


6. [1] Choose the folder for your work environment. This is the default folder where all files created with Prinect Package Designer such as the \*.evd files are saved.

[2] If instances of Prinect Package Designer are running on several computers in your network, they can share the resources in a specified folder. Typically, this is a folder on the Production Manager Server. To specify a new folder where to copy the resources, choose "Set location and copy files". To use an existing folder, choose "Select existing settings folder" and navigate to the folder.

[3] The same as in item [2] applies to library copying. Select the folder where you wish to save the standard library.

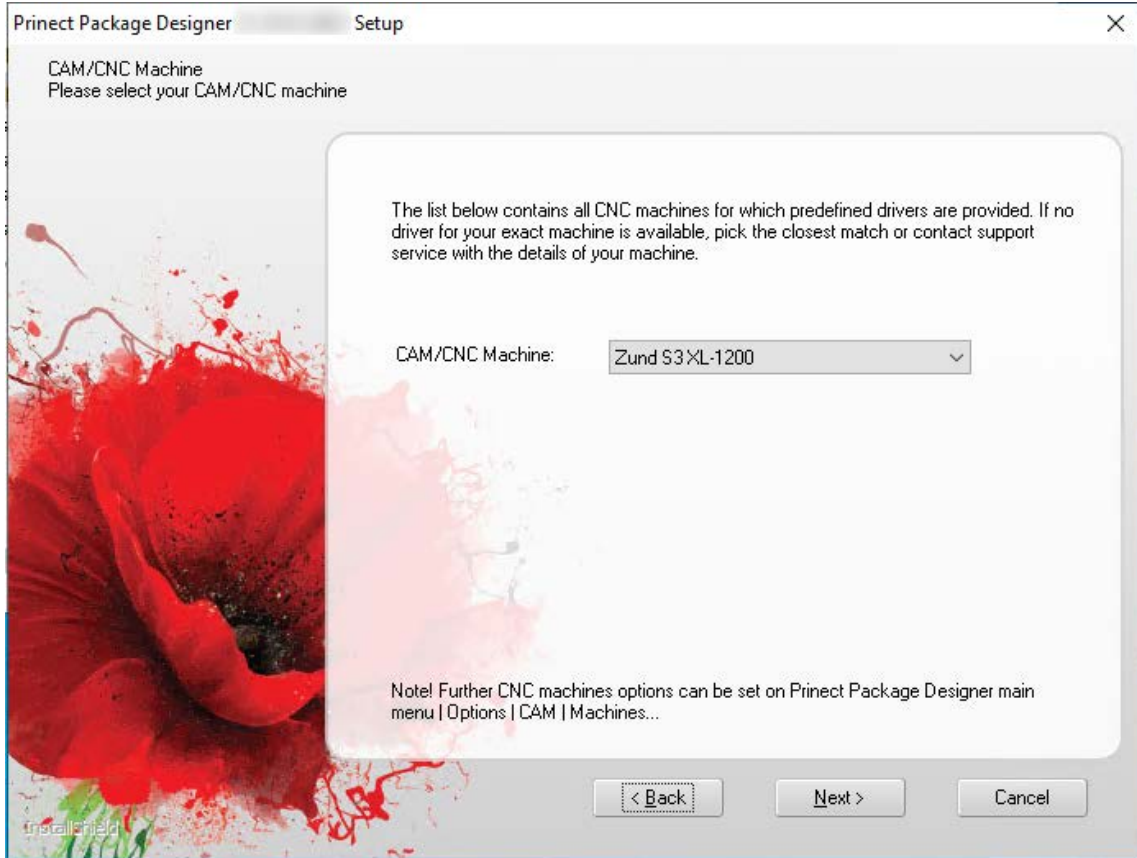
To specify a new folder, choose "Set location and copy files". To use an existing folder, choose "Select existing libraries folder" and navigate to the folder.



# Installation

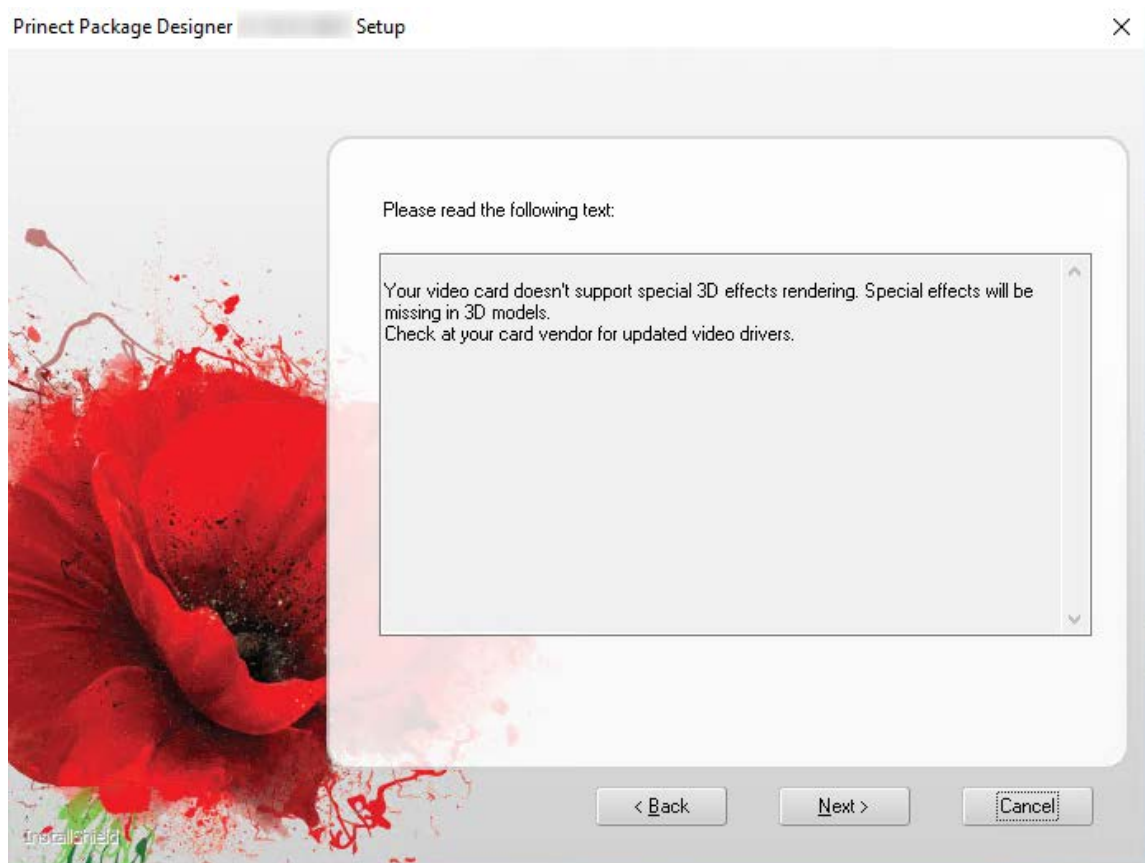
7. Select the CAM or CNC machine used in your company.

To can specify it later; choose "Tools> CAM > Machines" in Prinect Package Designer.



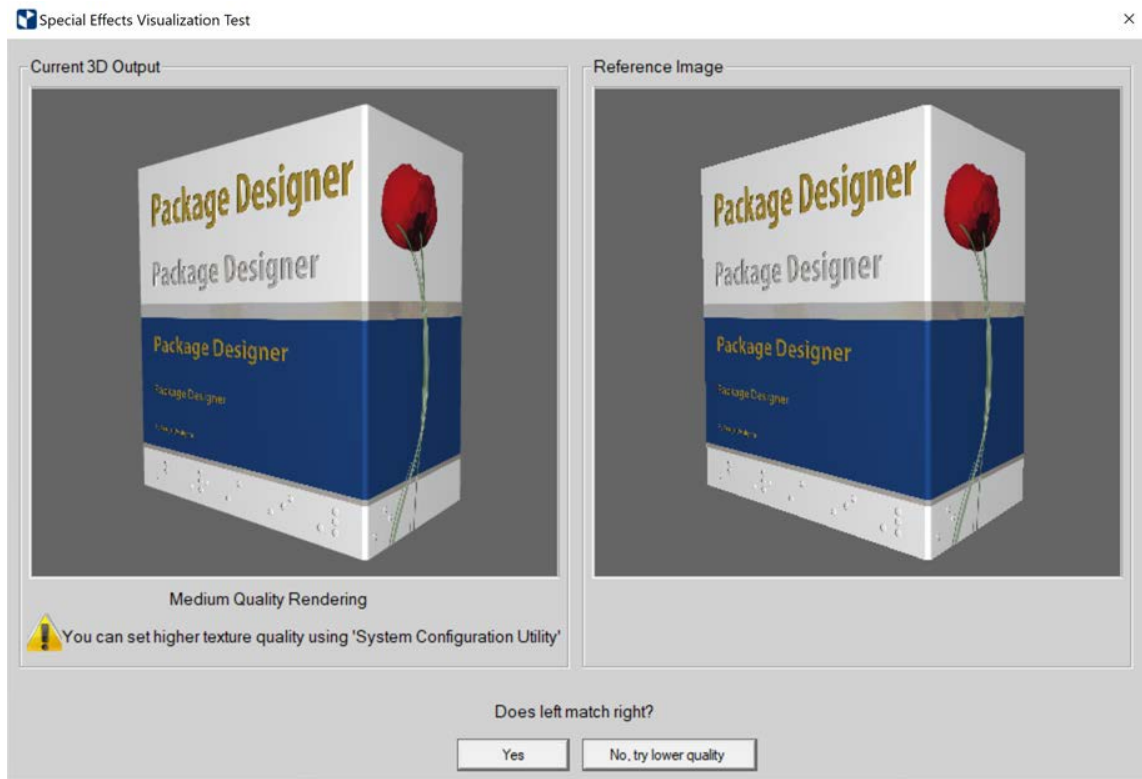
8. For unrestricted use of the 3D function (display of special 3D effects), you need a powerful graphics card and the corresponding driver.

During installation, a check is made to see if these requirements are met. If not, the following dialog displays:



# Installation

The following dialog displays if the requirements are met:

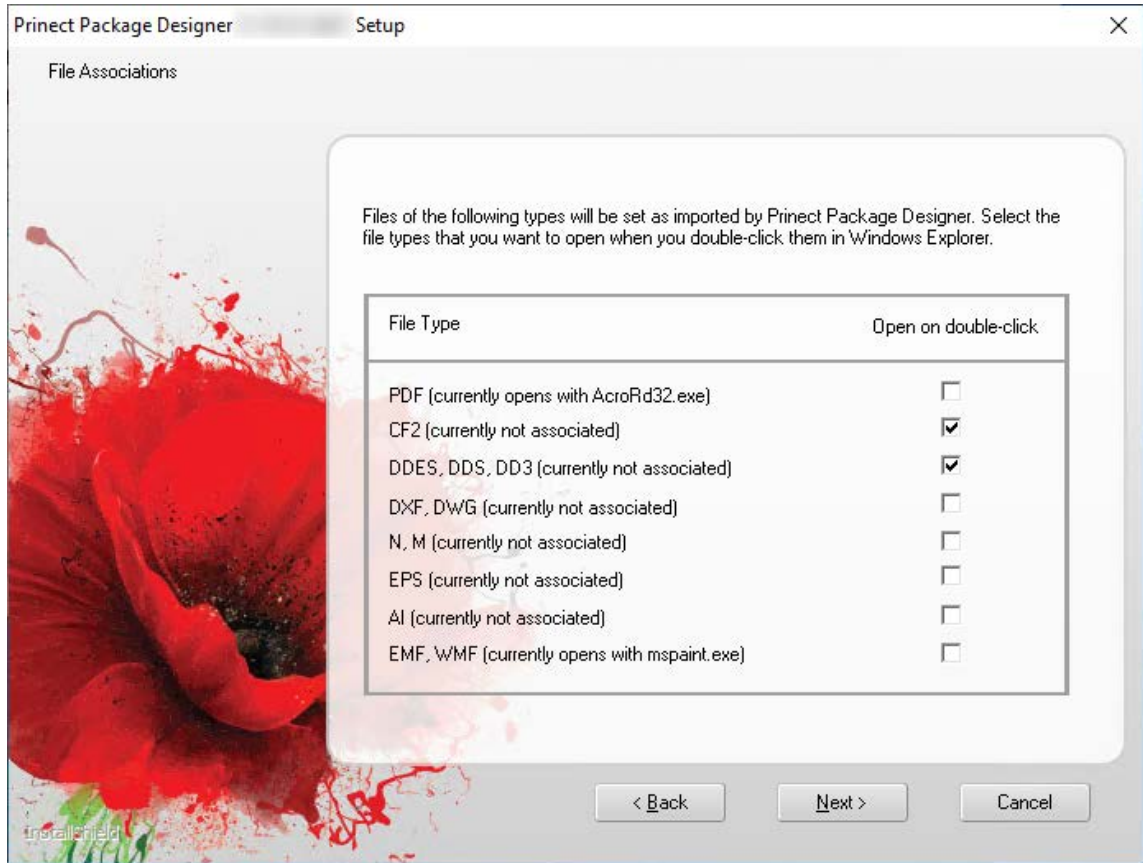


Check the quality of the left image rendered with your settings by comparing it with reference image to the right. If not, you can click "No, try lower quality" and check if the comparison is more satisfactory at a lower resolution. You can repeat this a second time. If the result is then insufficient although the quality was reduced, the dialog mentioned above appears with the message that the graphics card is insufficient or that the appropriate driver is not available.

Confirm with "Yes" if you are satisfied with the image comparison.

9. If Adobe Illustrator is installed on your computer, you will be prompted to close it should it be running.

10. Select the file formats to be opened automatically with Prinect Package Designer when double-clicked.



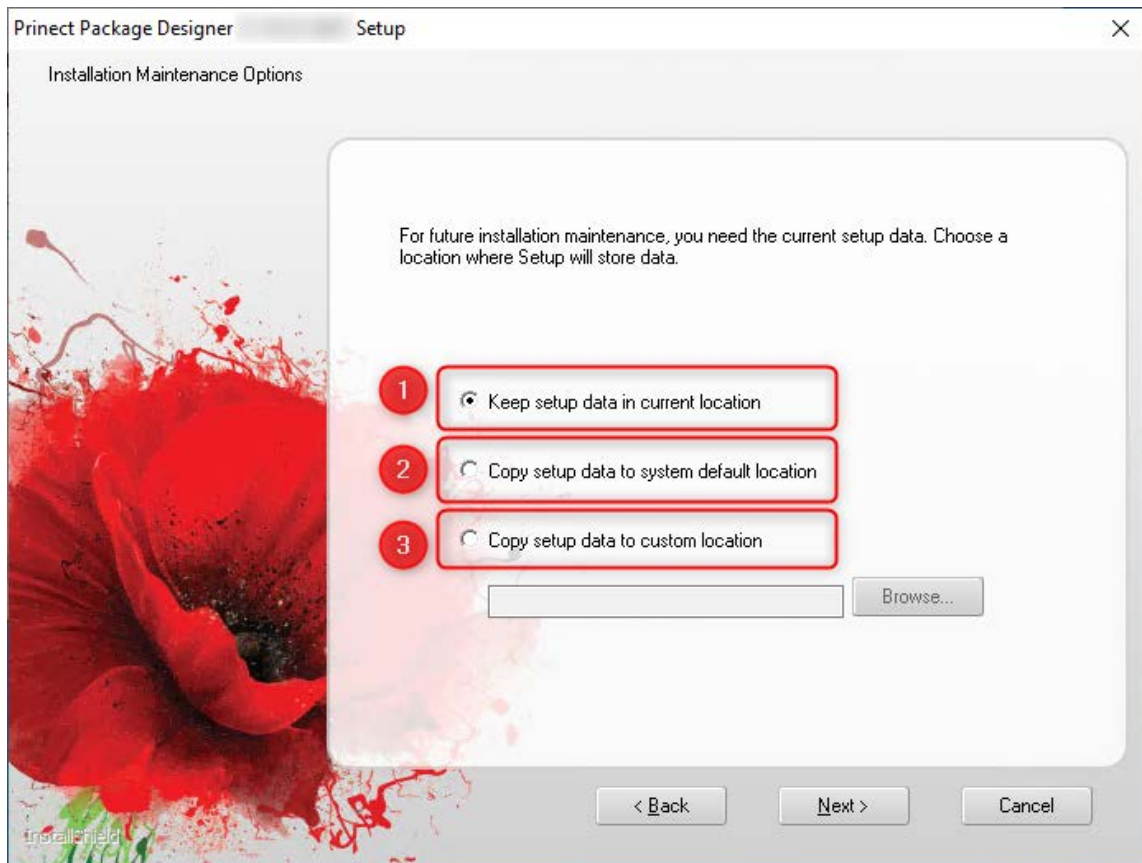
## Installation

11. Choose the folder where the setup data for later updates is to be stored.

[1] "Keep setup data in current location": If there is already setup data from a previous installation, the new setup data will be written to the same folder.

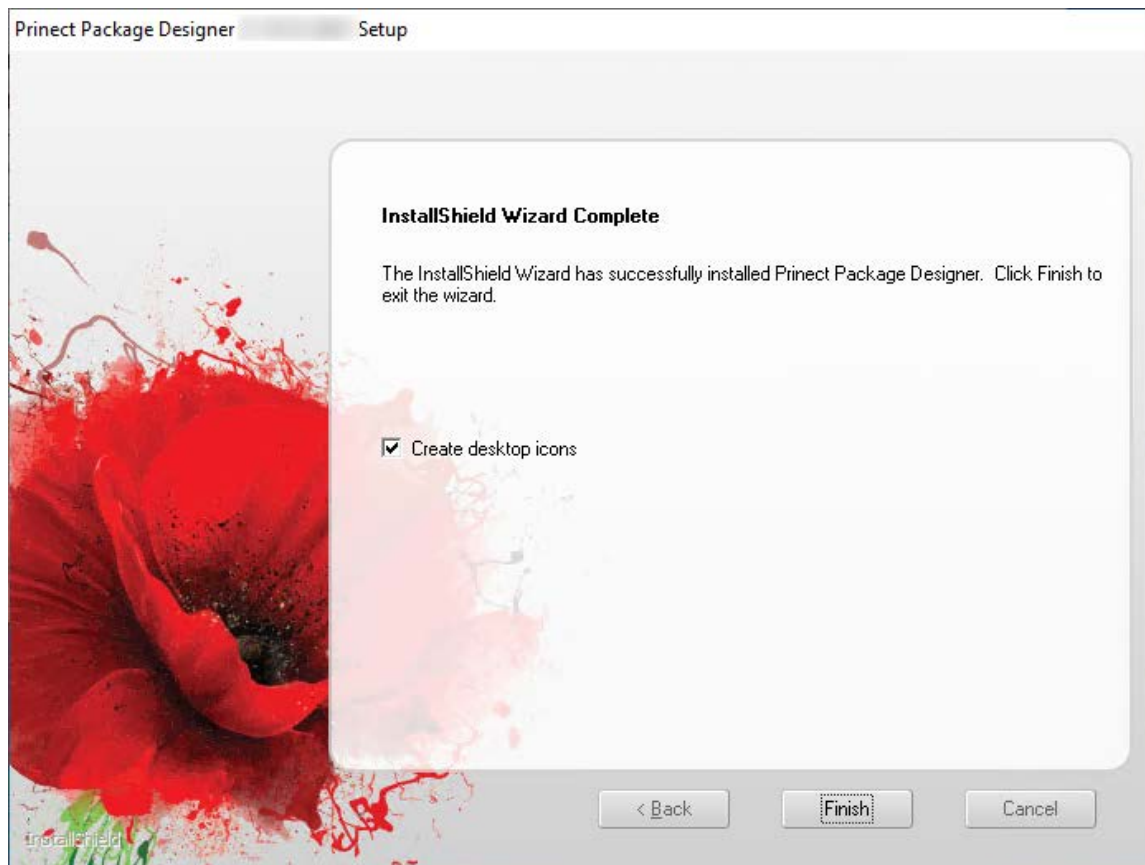
[2] "Copy setup data to system default location": The setup data is copied to the folder the system offers by default.

[3] "Copy setup data to custom location": If you choose this option, you can click "Browse" to go to the folder you want.



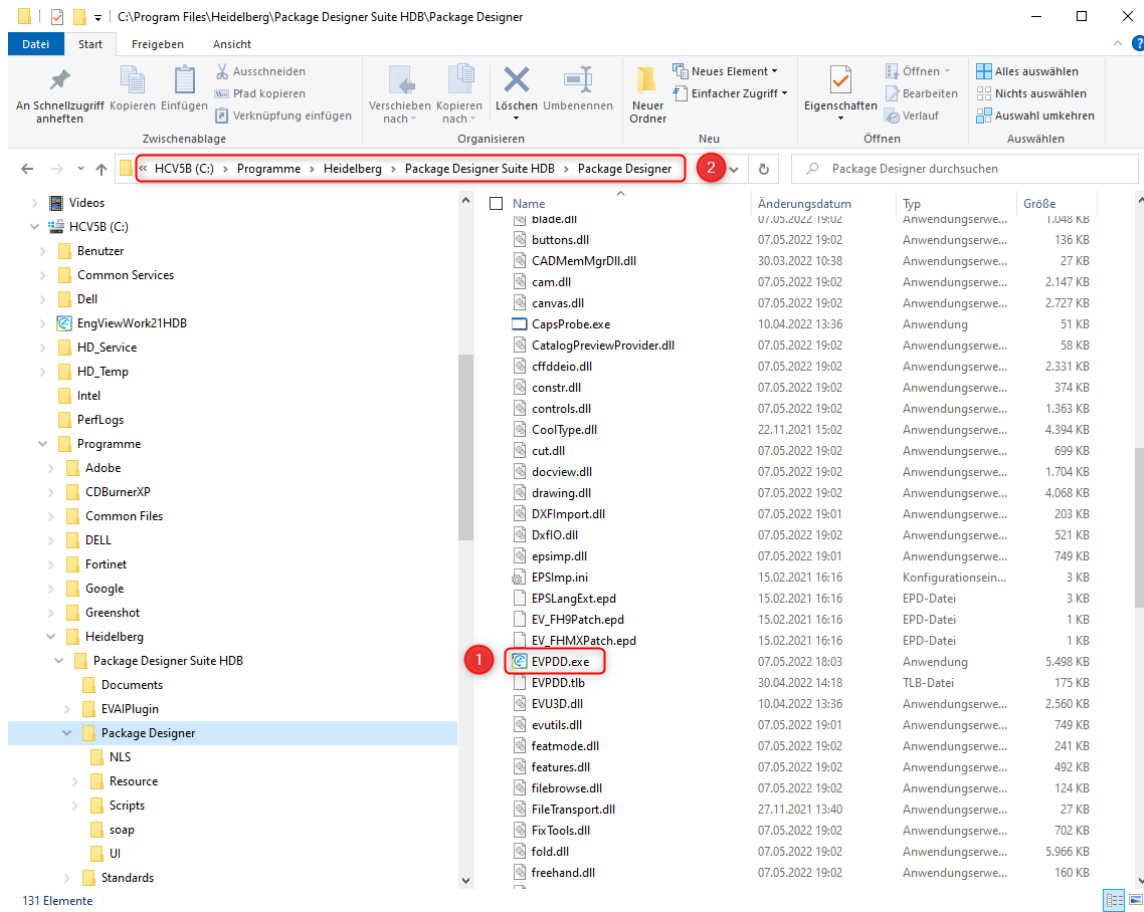
- Option "Create desktop icons": Choose this option to place icons that you can use to start the program, for example, on the desktop.

Terminate installation with "Finish".



# Installation

The program executable is then located here in the file system:

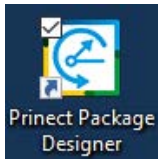


# Prerequisites for running Prinect Package Designer

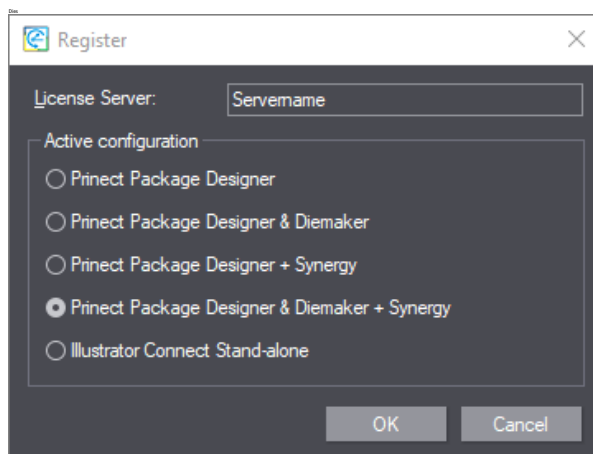
The following prerequisites must be met to be able to run Prinect Package Designer after successful installation:

## Licensing

1. Start Prinect Package Designer by clicking the "Package Designer" icon or via the Start menu:



2. Confirm the dialog with the license note.
3. Specify the computer name or the IP address of the License Server and select the configuration for which you purchased a license.  
(The selected configuration will become available if the respectively required licenses were enabled in the License Server with the License Manager.)



You can also invoke this dialog with "Help" > "Register". Please restart Prinect Package Designer to make the changes take effect.

# Installation

## Integrated Workflow

To operate Prinect Package Designer in the integrated workflow, you must perform the steps described in section ["Prinect Package Designer Server", page 24](#) in addition to licensing:

- During installation, you chose the "Server Installation" with "Prinect Package Designer Server" option, which makes the "EVJDFDaemon" background service run on the Prinect Workflow Server. See ["PPD background service "EVJDFDaemon" \(interface PPD to PPM\)", page 25](#)
- Configure the JDF Server in the "System Configuration Utility". See ["Configure JDF server for manual integrated workflow in the client "EngView System Configuration Utility"", page 27.](#)
- (Usually, you do not need to perform this step actively:) The background service "PD-Connect" must have been started on the Prinect Production Manager computer. See ["PPM background service "PD Connect" \(interface PPM to PPD\)", page 26](#)

## Modify, Repair or Remove Installation

Prerequisites for modifying, repairing or removing the installation are: an initial installation has been completed, and Prinect Package Designer has been terminated if it has been running.

1. There are two ways of starting the Assistant:

- Option 1: Invoke the Windows Start menu, open the folder "Heidelberg Prinect Package Designer" and click "Maintain Heidelberg Prinect Package Designer".
- Option 2: In the Windows Start menu, open Windows Settings, then "Apps". In "Apps and features", select Prinect Package Designer and click "Uninstall".

In both cases, the following uninstallation sequence starts.

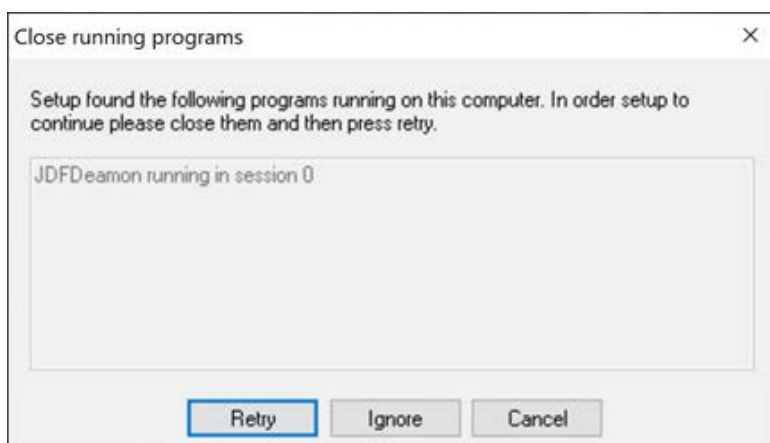
2. The following dialog displays only if you uninstall Prinect Package Designer **Server**. In this case, you would typically be working with an integrated workflow and one or more clients, see also ["Integrated Workflow: Brief Overview", page 24](#) and ["PPD background service "EVJDFDaemon" \(interface PPD to PPM\)", page 25](#).

If you uninstall a server installation in this environment, the background service "EVJDFDaemon" will also be terminated, although requests from clients to this background service may still be in progress. Therefore, this dialog offers the following choices:

"Retry": Check if all client requests have been processed. If yes, stop the background service "EVJDFDaemon" manually in Task Manager and continue with the uninstallation afterwards.

"Ignore": If you select this option, the uninstaller will automatically terminate the background service "EVJDFDaemon", and any client requests that may be in progress will be canceled or no longer processed.

"Cancel": This will terminate the uninstallation process.



## Installation

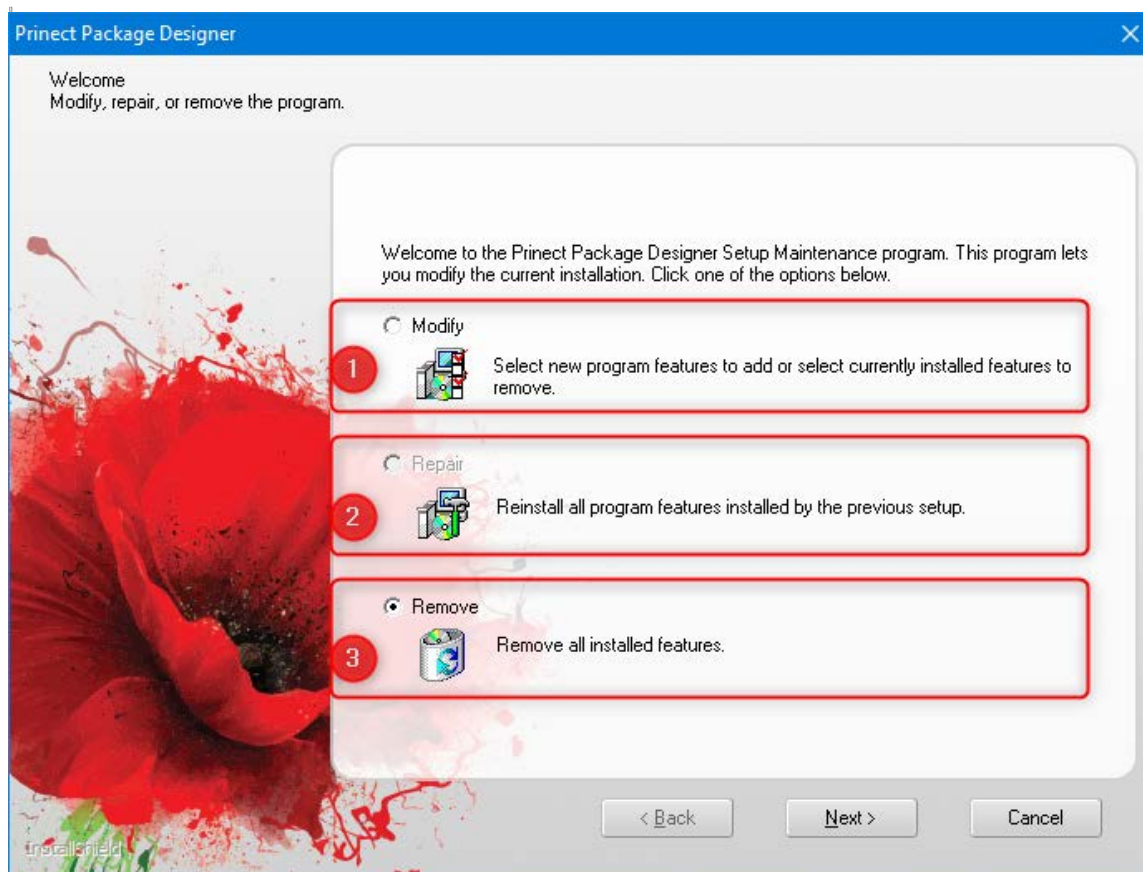
### 3. Select a mode:

[1] : "Modify": The "Modify" function has no effect here.

[2] : "Repair": Installation will be repeated and any errors of the initial installation will be corrected. The configuration will remain unchanged.

[3] : "Remove": The program is uninstalled and completely removed from the computer.

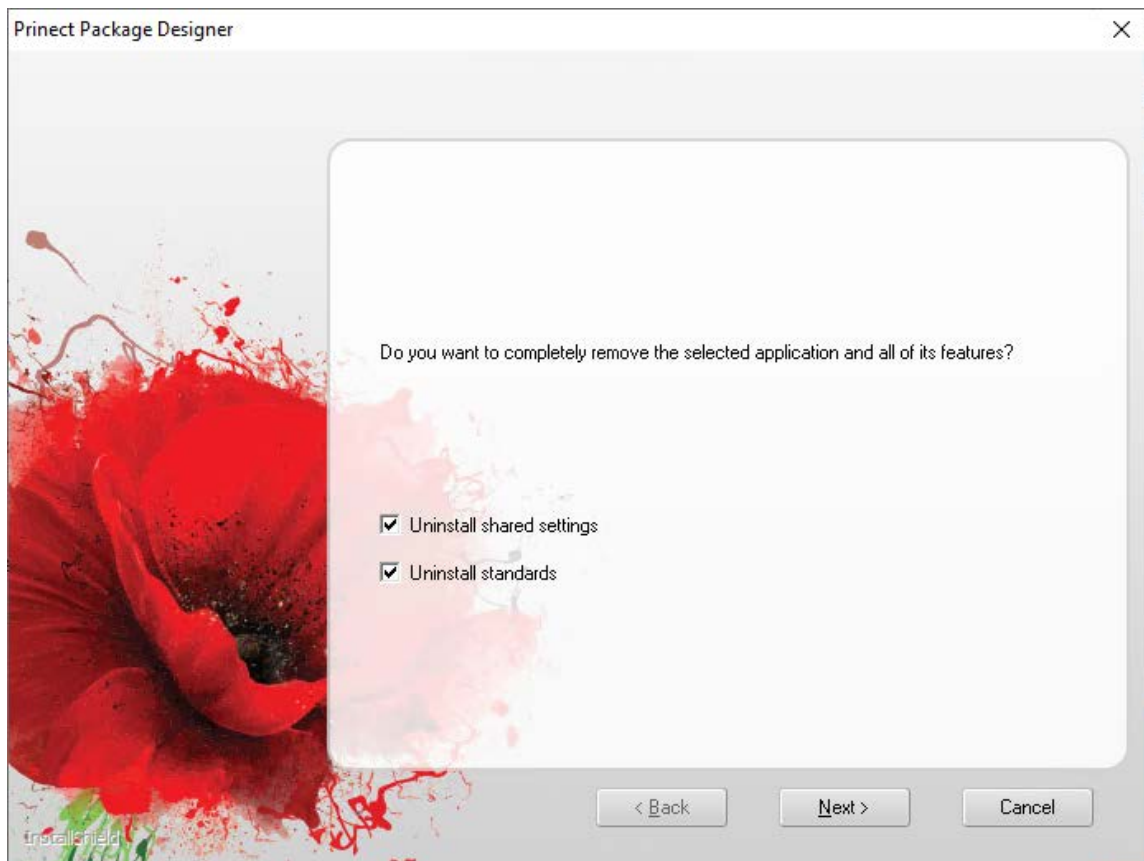
Choose "Remove" and click "Next".



4. This step is relevant only if multiple computers share folders for resources and the Standard Library.

You can then decide to delete the resources and the Standard Library during uninstallation. If you are sharing resources and the Standard Library with other clients and they are still using them, you may typically want to keep them.

Click “Next”. This will start the uninstallation process.



# Prinect Package Designer Server

### **Integrated Workflow: Brief Overview**

You can install Prinect Package Designer as CAD server on the Production Manager server of a Prinect Integration system. This CAD server will then run in the background without dedicated user interface.

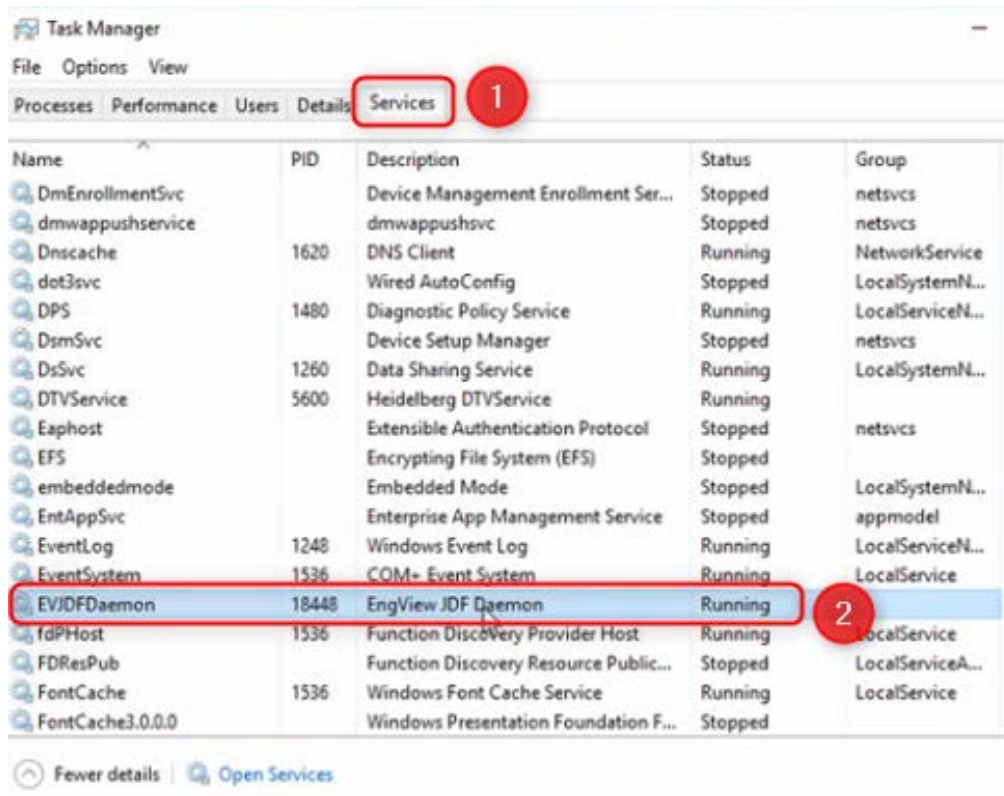
In the integrated workflow, Prinect Production Manager (PPM) always sends jobs to Prinect Package Designer (PPD) where they are processed, and the results (contour or layout) are sent back to PPM.

This is also the case in an extended workflow, i.e. with MIS import or if Prinect Business Manager (PBM) is involved. In this case, for example, the job is sent from PBM to PPM and from there to PPD. The result is returned on the same path, i.e. via PPM to PBM.

As a rule, you have two options in the integrated workflow: You can have a job processed automatically by the PPD server with preset parameters. This process runs completely in the background. However, you can also process a job manually on PPD. In this case, you must run PPD on the client manually, select the job from the job list, process it manually, and then return the result. The decision as to whether automatic or manual is made by setting the DesignCreation template in Prinect Cockpit.

**PPD background service "EVJDFDaemon" (interface PPD to PPM)**

The interface to PPM is vital for PPD installation. On the PPD side, a background service must run during operation that receives the jobs (requests) from PPM and sends the results back to it. For this purpose, you must set the "Server Installation" with "Prinect Package Designer Server" option during installation. This will install and start the server function "EVJDFDaemon" [2] (visible in Task Manager > "Services" tab [1], see the screenshot below).

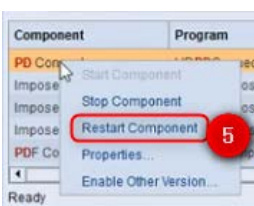
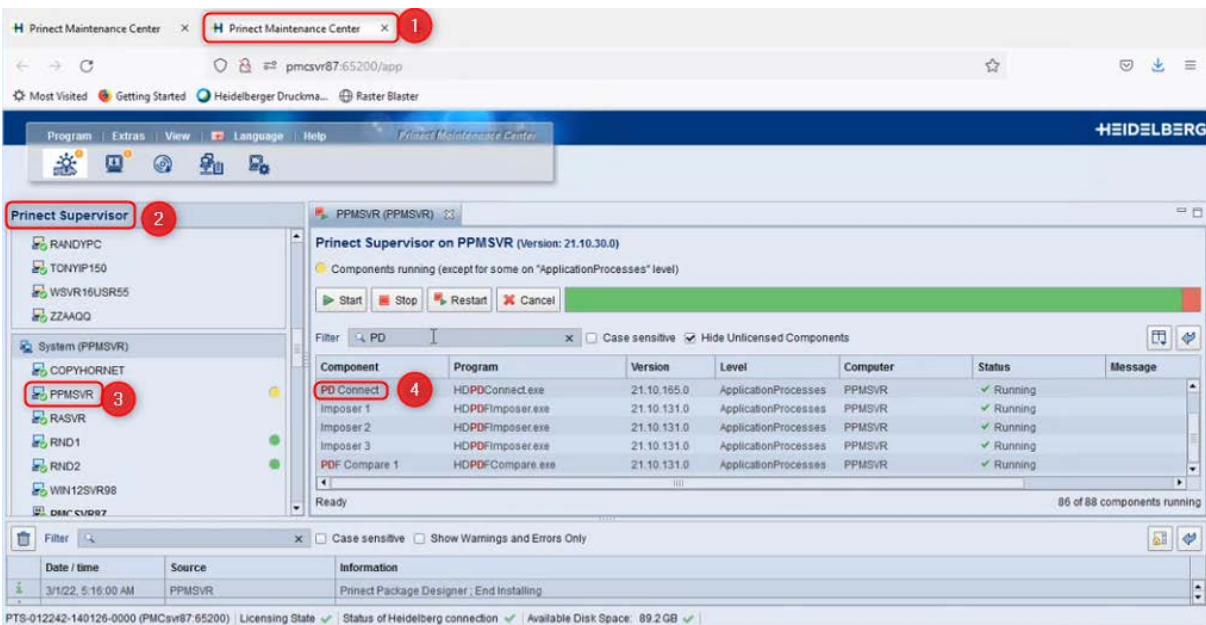


# Installation

## PPM background service "PD Connect" (interface PPM to PPD)

On the PPM side, the background service "PD Connect" must be running; it sends requests to PPD and receives the results. This process runs in the background automatically. You can (re)start it via PMC if this is not the case as an exception:

1. Go to the "Prinect Supervisor" [2] view in PMC [1].
2. Select the PPM server [3]. The list to the right shows the components running on this server.
3. Select the "PD Connect" [4] service.
4. Invoke the context menu and choose "Restart Component" [5].



### Configure JDF server for manual integrated workflow in the client "EngView System Configuration Utility"

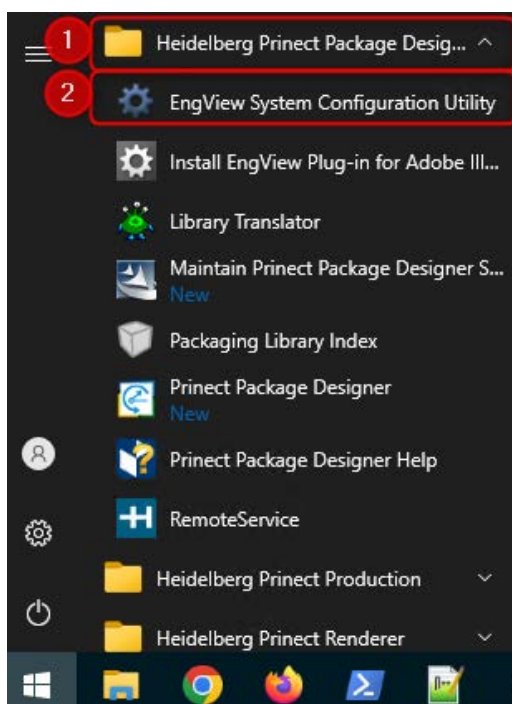
This configuration is required for the manual integrated workflow because in this case PPD is invoked on the client and the JDF server and the data transmission channel via Port ID must be made known to the client. In the automatic workflow, data exchange between JDF server and the PPD server application runs automatically in the background, and the address for data exchange is already known.

Thus, the JDF server name as well as the port ID must be made known to each client that is to be used for the manual integrated workflow.

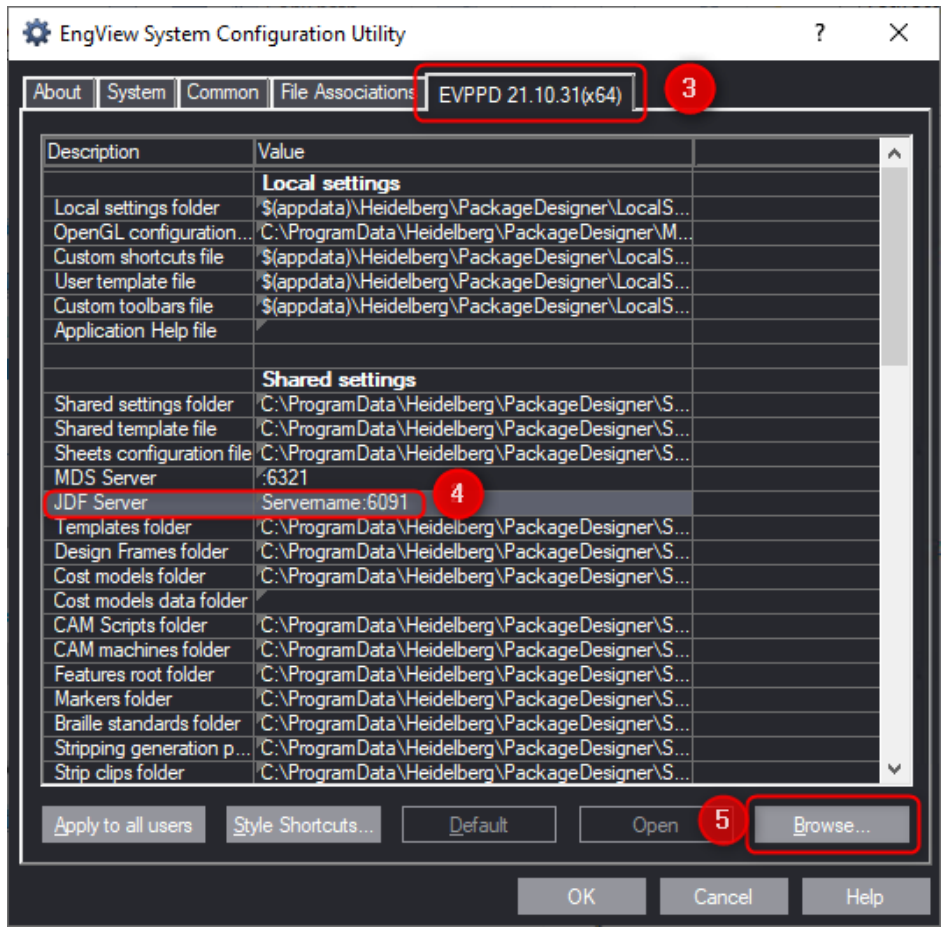
1. If PPD is running, you must terminate it first.
2. In Windows Start menu, open "Heidelberg Prinect Package Designer" [1] and then "EngView System Configuration Utility" [2].
3. Go to the "EVPPD 21.10...." tab [3].
4. Click next to "JDF Server" [4] and then "Browse" [5].

Type the JDF server name next to "Server IP" and Port ID "6091" next to "Server port".

(Additional information: An entry for the MDS server is not required, as the background service "PD Connect" establishes the connection to MDS. The MDS connection is important for access to the materials and the PPD library entries. The PPD library entries located in the folder specified during installation are addressed via metadata in the MDS (IDs descriptions)).



# Installation



5. Confirm with "OK".

## **Heidelberger Druckmaschinen AG**

Gutenbergring

D-69168 Wiesloch

Germany

Phone +49 6222 82 00

Fax +49 6222 82 37 05

**heidelberg.com**

### **Copyright © 2025 Heidelberger Druckmaschinen AG.**

No part of this book may be reproduced without prior written permission.

#### **Important Notice:**

We are dedicated to improving and enhancing our products. Consequently, the information in this manual is subject to technical modifications and other changes without notice. Heidelberger Druckmaschinen AG assumes no responsibility for information and description as far as third-party products are concerned.

The information contained in this manual about performance and speed as well as technical data concerning application of our products is not legally binding as it does not constitute a written contract of features. If any problems occur with the product described in this manual, please contact the Heidelberg agency which is responsible for you.

Revision 1.0

As of Version 2021.10 - CR 55.0.04

#### **Impressum**

Fonts: Heidelberg Antiqua MI, Heidelberg Gothic MI

#### **Trademarks**

Heidelberg, the Heidelberg logotype, Prinect, Suprasetter and Speedmaster are registered trademarks of Heidelberger Druckmaschinen AG in the United States and other countries.

Adobe and PostScript and Acrobat are either registered trademarks or trademarks of Adobe Systems Incorporated in the United States and/or other countries.

PANTONE and Hexachrome are registered trademarks of Pantone Inc. All other trademarks are property of their respective owners.

**Subject to technical modifications and other changes.**