

# Product Information

## Continuous Release Info 2 – Business-, PPF-, Color-WF & PDF Toolbox News – Database Announcement



May 2023

# Summary

**Prinect 2021.10.15** brings some important new functionality that we are pleased to announce. But not only our “major products”, also Prinect Color Toolbox and Prinect PDF Toolbox have been enhanced by new functionality in the continuous update packages delivered so far and that has not yet been communicated. Please find a collection of important information on the latest release – along with useful new features for PDF creators and color specialists that were implemented since the release of Prinect 2021.10 in this product information. necessity

## New functions / benefits at a glance:

- **Business Manager 7.28 with new Packaging Features** and **Combiner functionality in PPF Handler** get released
- **Prinect 2021.10.15** can work on **MAC OS13.2** , Prinect PDF Toolbox even in **native** mode.
- **Prinect Color Toolbox** displays **SCTV** and includes “Quality Monitor” for Prinect Image Control
- **Prinect Multicolor** process is improved by helpful new functions.

## Important Announcement!

**Internal database update based on MSSQL 2022 in the pipeline.**

## Good to know:

- Prinect users do not need a “**Pantone ® Connect**” license for our Prinect color workflow. As HEIDELBERG, we have contracts with PANTONE that allow us to integrate and use the PANTONE color tables within the Prinect workflow, the Prinect Color Toolbox, and the Prinect PDF Toolbox. Should you as Prinect user want to use PANTONE color tables in other Adobe applications, e.g. InDesign, Photoshop, Illustrator, then you must have a license for "PANTONE Connect".

# Content

<b>Prinect 2021.10.15 Highlights</b>	<b>5</b>
<b>1 Prinect Business Manager 7.28 with Packaging functionality in same Media Set</b>	<b>5</b>
<b>2 Pressroom Connectivity</b>	<b>5</b>
<b>2.1 Automated PPF Handler available</b>	<b>5</b>
<b>2.2 Combiner functionality in Prinect 2021.10.15 PPF Handler</b>	<b>5</b>
<b>3 MAC OS 13.2 (Ventura) supported = Mac “off the shelf”</b>	<b>6</b>
<b>4 Prinect Signa Station (Packaging Pro) – Automarks improved</b>	<b>6</b>
<b>5 Plate Pilot - Latestage marks replacement possible</b>	<b>6</b>
<b>6 New Color Library within Prinect - still in test</b>	<b>6</b>
<b>7 Pantone Connect neither necessary for Prinect WF, Color Toolbox nor PDF Toolbox</b>	<b>7</b>
<b>Prinect Color Toolbox</b>	<b>7</b>
<b>8 Tone value increase as CTV diagram</b>	<b>7</b>
<b>8.1 CTV diagram in Prinect Color Toolbox</b>	<b>7</b>
<b>8.2 Different methods for evaluating tone value increase</b>	<b>9</b>
<b>9 Export of measuring data in CxF data format</b>	<b>10</b>
<b>10 Color Toolbox report “Quality Monitor” also for Prinect Image Control</b>	<b>11</b>
<b>10.1 IT8 data out of Prinect Image Control can be used for G7 certification</b>	<b>12</b>
<b>11 Connection of X-Rite eXact measuring device via Bluetooth</b>	<b>12</b>
<b>12 Table of handheld measuring devices</b>	<b>12</b>
<b>Prinect Multicolor</b>	<b>13</b>
<b>13 Prinect Multicolor-improvements in Prinect Workflow</b>	<b>13</b>
<b>13.1 Mixed screening scheme for Multicolor directly available</b>	<b>13</b>
<b>13.2 Excluding Marks and Images from Multicolor separation made easy</b>	<b>14</b>
<b>14 Prinect Multicolor general infos</b>	Fehler! Textmarke nicht definiert.
<b>Prinect PDF Toolbox</b>	<b>15</b>
<b>15 MAC OS 13.2 (Ventura) native mode support from Prinect PDF Toolbox 2021.10.15</b>	<b>15</b>
<b>16 Barcode/VDP Editor News</b>	<b>16</b>
<b>16.1 Additional Standards supported in QR / Data Matrix generation</b>	<b>16</b>
<b>16.2 Great features for working with variable data from CSV files</b>	<b>16</b>
<b>16.3 Variable colors</b>	<b>17</b>
<b>16.4 Random Image Generation</b>	<b>17</b>
<b>17 PDF Optimization</b>	<b>18</b>
<b>18 Diecut and packaging enhancements</b>	<b>18</b>
<b>18.1 Show Effects:</b>	<b>18</b>
<b>19 PDF Report / Preflight</b>	<b>19</b>

<b>19.1 New GWG Preflight sets</b>	<b>19</b>
<b>19.2 Other Preflight enhancements – with new tab for PDF/VT checks</b>	<b>19</b>
<b>20 Spotcolor handling</b>	<b>20</b>
<b>21 Assemble Documents</b>	<b>20</b>
<b>Important Announcement: Prinect Database Engine upgrade necessary soon</b>	<b>21</b>
<b>22 Prinect Database Engine needs an Upgrade to Microsoft SQL Server 2022</b>	<b>21</b>
<b>23 Important notices / hints to the upcoming Microsoft SQL Server upgrade</b>	<b>21</b>
<b>23.1 All Prinect Workflow installations are affected by the MSSQL upgrade</b>	<b>21</b>
<b>23.2 Prinect Data Center upgrades</b>	<b>21</b>
<b>23.3 Operating system requirements for new database engine Microsoft SQL Server 2022</b>	<b>21</b>
<b>24 Appendix</b>	<b>22</b>

### **Revision history:**

2023-05-08 – First version in Prinect Kow-How portal

# Prinect 2021.10.15 Highlights

## 1 Prinect Business Manager 7.28 with Packaging functionality in same Media Set

This latest Prinect Business Manager version is part of the Cumulative Update Package Prinect 2021.10.15. It is advisable to make a backup before starting the upgrade to that new version, this is why we will send out an advance information to all customers already using the Business Manager via the Prinect Maintenance Center.

We do not only deliver the Business Manager software as part of the Media Set. The upcoming release is also further extending the integration with our Prinect Business Manager for the use in packaging.

Main target group for the added Business Manager functionality are customers that might be described as mixed-commercial printers. These customers already have a foot in the door of the packaging arena and are characterized by a broad product portfolio with commercial print, folding carton and label offerings. Yet, the production requirements are not as complex as the ones of a highly specialized packaging printer. Those companies are usually relying on a range of established clients and are successful with a business approach more focused on a local scale.

A detailed description of the packaging capabilities and the related benefits in daily operation is available in a separate Product Information covering the Prinect Business Manager version 7.28 ([PI Prinect Business 21.10 V7.28](#)). Make yourself familiar with the new features of the Business Manager with this worthwhile read.

## 2 Pressroom Connectivity

### 2.1 Automated PPF Handler available

With the release of Prinect 2021.10 we replaced the PPF Combiner in the Prinect Cockpit with the new Portal Widget **PPF Handler** delivering improved stability, performance, and support.

The configuration of the PPF processes (input and output directories, rotations, color code assignment) and the attribution rules are now carried out in the Prinect Portal as shown in the videos listed below

Available Training Videos (EN)	(DE)
<a href="#">PPF Handler in Portal (01) .en</a>	<a href="#">PPF Handler im Portal (01) .de</a>
<a href="#">Process Configuration PPF Import (02) .en</a>	<a href="#">Prozesskonfiguration PPF-Import (02) .de</a>
<a href="#">Extended Process Configuration (03) .en</a>	<a href="#">Erweiterte Prozesskonfiguration (03) .de</a>
<a href="#">List of PPF and Operations (04) .en</a>	<a href="#">Listen für PPF und Operationen (04) .de</a>

### 2.2 Combiner functionality in Prinect 2021.10.15 PPF Handler

Although the existing PPF Hotfolders and configuration settings of the old PPF Import get migrated by the upgrade, we decided to delay the upgrade for “pure pressroom customers” – until now!

Reason was, that this migration was only sufficient for customer solely utilizing the automated PPF import features. As we could not anticipate how many of you were requiring “Combiner” functionality we have not yet be offered the upgrade to Prinect 2021.10 to prevent issues.

The missing functionality is now available with the Prinect 2021.10.15.10 cumulative update package. The modified [documentation](#) is available in the [Prinect KnowHow](#) portal, a video is in preparation.

### 3 MAC OS 13.2 (Ventura) supported = Mac “off the shelf”

Princt can be used on Mac computers running on Mac OS ≥ 13.2 (Ventura) from cumulative update version 2021.10.15 onwards. This enables us to use new Mac computers “off the shelf” and is especially beneficial for our Princt PDF Toolbox, as it is an Acrobat Plug-In. Acrobat is more powerful in native mode and our Plug-In application benefits from this, especially when it comes to handling big, complex PDF files.

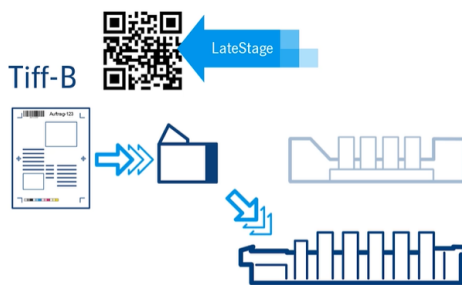


### 4 Princt Signa Station (Packaging Pro) – Automarks improved

With regard to impositioning requirements, the new release brings detail-improvements with layout creation and sheet imposition contributing to workflow automation and ease of use for the operator. Primary scope of the added functionality has been handling and dealing with print- and related marks such as cut marks, 1up ID and 1up cover clip path marks. Automarks are automatically placed print control marks. One can define a set of Automarks and store the complete set as a resource. The use of preset Automark-set-groups helps to reduce manual interventions in an automated workflow.

### 5 Plate Pilot - Latestage marks replacement possible

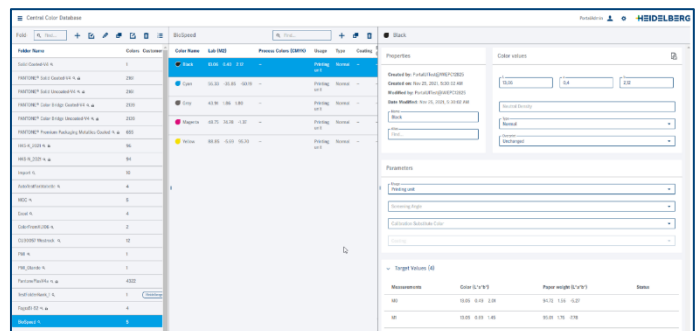
Sometimes changes in the production process are required at very short notice, e. g. rescheduling to a different press. Therefore it can be necessary to replace placeholder information in marks immediately before imaging the plates inside the already generated Tiff-B.. For this purpose, so called "Latestage Marks" can be used.



In a JDF workflow with Signa Station, these marks can be positioned and the placeholders can be defined with the Signa Station as shown in this video [Latestage Marks \(DE: Latestage-Marken\)](#) and described in the online help [Signa Station - Latestage Marks \(DE Integration Manager - Latestage-Marken\)](#). The “TiffMarksCreator” in the Imposition Output sequence writes the information in to the JDF, which is then interpreted correctly by Plate Pilot and Princt Shooter

### 6 New Color Library within Princt - still in test

With our first Continuous Release Info chapter 8 we informed you about some Product structure changes preparing the use of the new **Color Library** →, a combination of the Princt color tables and the color data base, in which the administration of the colors will be moved from the Princt Cockpit to a dedicated Princt Portal Widget. This functionality is still in field test and not yet released. It is possible to activate the functionality for selected customers.



A separate Product Information requiring feedback from our test installations is in preparation and will be provided in due course. It may happen, though, that the Princt online documentation contains first references to the planned functionality. We apologize for any inconvenience this may cause.

## 7 Pantone Connect neither necessary for Prinect WF, Color Toolbox nor PDF Toolbox

Users of the HEIDELBERG Prinect Workflow, Prinect Color Toolbox or Prinect PDF Toolbox **do not need a “Pantone Connect” license** using Adobe Acrobat Pro.

- Pantone ® color tables are included in our Prinect Production Manager (in MDS) and in Prinect PDF Toolbox. (HEIDELBERG pays the royalties for using the Pantone ® color tables.)
- All users of Prinect Color Toolbox and Prinect PDF Toolbox are able to use these color tables. Prinect PDF Toolbox generates PDF documents with embedded Pantone ® color information.
- In **Adobe Acrobat Pro** the colors of this PDF document are always displayed correctly due to the embedded color information.

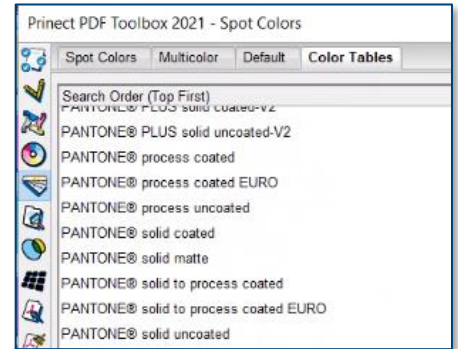


Image: Pantone ® color tables inside the PDF Toolbox

### Please note:

- Our HEIDELBERG license for the use of Pantone ® color tables does not cover the use in **other** applications such as Adobe Creative Cloud “Adobe Photoshop”, “Adobe Illustrator” or “Adobe InDesign”.
- For the latter applications the user will need a license for „Pantone Connect“ in order to display Pantone ® colors.
- Please see Pantone’s ® publication (for your country’s specific regulations please choose your country in the menu):  
DE: [PANTONE® Deutschland | Pantone Connect | Find a Pantone Color](#)  
EN: [PANTONE® USA | Pantone Connect for Adobe Creative Cloud](#)



# Prinect Color Toolbox

## 8 Tone value increase as CTV diagram

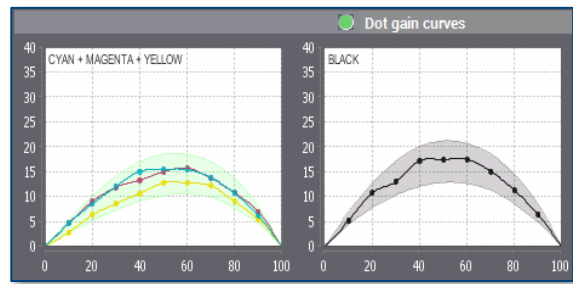
### 8.1 CTV diagram in Prinect Color Toolbox

The menu “measuring” of the Prinect Color Toolbox now enables 3 display types of tone value increase:

- New: CTV (= “color tone value”)
- Dot gain (= tone value increase)
- Printing characteristic



The best known is the display “dot gain curves” shaped like an arc and being calculated with the Murray Davis formula.



**New:**

An additional menu button “CTV” enables displaying values following the **SCTV/CTV formula**. It is possible to display CMY colors or Black or a spot color. Also the other Prinect Color Toolbox menus “Compare” and “Analysis” (= quality monitor) now include the possibility to choose “CTV” as display mode.

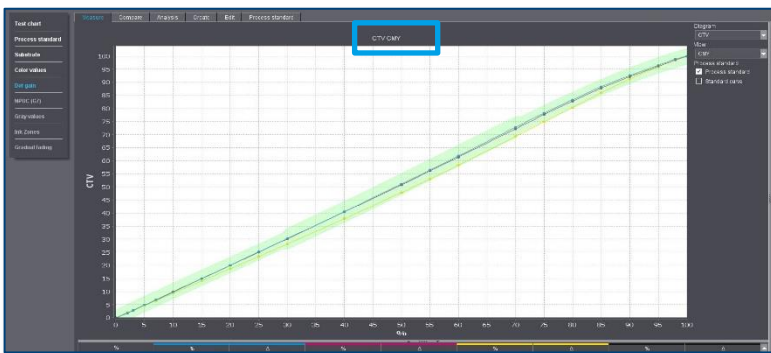


Image: Tone value increase curve for process colors CMY following CTV-formula also displaying the corresponding tolerance field

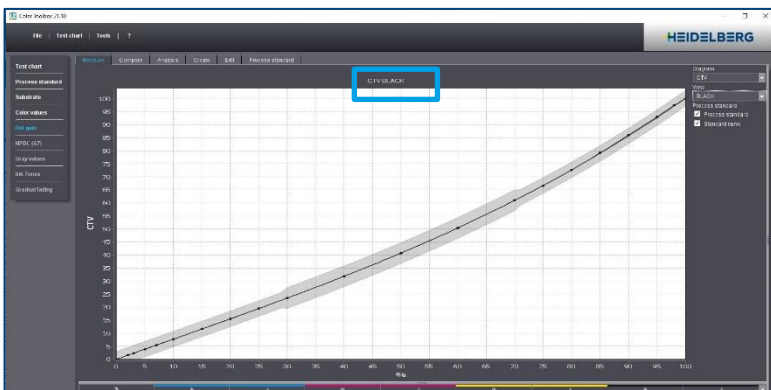


Image: Tone value increase curve for Black following CTV-formula also displaying the corresponding tolerance field

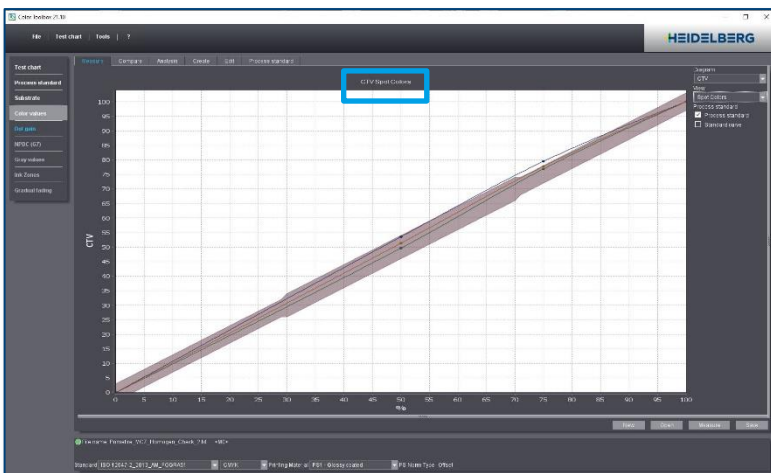


Image: Tone value increase for spot colors following SCTV (= spot color tone value) formula also displaying the corresponding tolerance field

### Importance:

The ISO 12647-2 norm will be reworked and then cover SCTV (= spot color tone value) and CTV. The norm is expected to be published in 2024/ 2025. It then shall contain standards and tolerance fields for: Fogra, (S)CTV, G7.

---

### Benefits:

- The advantages of SCTV measuring of tone value increases can be used and displayed.
  - Prepared for future norm requirements
- 

### Availability:

- As of version Prinect 2021.10.15

Links to the appropriate Online Help chapter in our Prinect KnowHow portal:

EN

[Prinect Color Toolbox 2021.10 - Online-Help](#)

DE

[Prinect Color Toolbox 2021.10 - Online-Hilfe](#)

## 8.2 Different methods for evaluating tone value increase

How to work with the new possibilities of displaying tone value increases?

### Our recommendation:

- For process colors BCMY we recommend using the common density based method following the Murray Davis formula.
- For spot colors we recommend the SCTV method.

### Density based method following Murray Davis formula

The common method for measuring tone value increase uses the **density** of the color. The recommendation for operators then always is to achieve a certain value for the printed density.

This method uses color filters for measuring the density. Color filters only are optimized for the process colors CMY. Adequate density filters for spot colors do not exist.

### SCTV- Method

The solution for spot colors is called SCTV method (SCTV = spot color tone value). The tone value increase evaluation is based on **Lab-values**. The Lab values are determined by measuring the color's spectral data.

The operator then can use the Lab-value as target for printing in order to achieve the desired tone value.

The calculation formula results in consistent steps for tone value increase. ISO 20654 describes method and tolerances for SCTV spot color tone value evaluation.

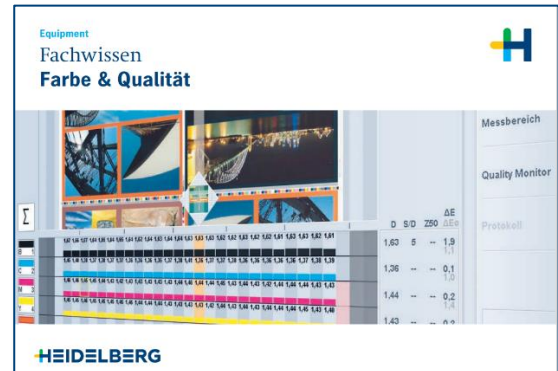
Concerning Multicolor process: we highly recommend using the SCTV method for the spot colors Orange, Green, Violet used in Multicolor process.

### Future

In future the SCTV method *can* also be used for process colors BCMY. Then it is called CTV (color tone value). But for the moment we recommend to use the density based method because it is well proven and common in the printing environment.

**Links:**

More details concerning “color” can be found in the expert guide “Color and Quality” in the Prinect KnowHow Portal (DE = “Fachwissen Farbe & Qualität”) pages 17f and 26ff.



EN: [Color and Quality - Expert Guide EN.pdf](#)

DE: [Farbe und Qualitaet - Fachwissen DE.pdf](#)

Or (only German): [Neuer ISO-Standard 20654 \(SCTV\): Tonwerte festlegen für Sonderfarben - LabelPack](#)

**9 Export of measuring data in CxF data format**

Measuring data which is stored in the Prinect Color Toolbox now can be exported in CxF data format. CxF is an open XML format for exchanging color information and can be read by many applications. Prinect Color Toolbox now also enables direct export of data to the central color data base.

**Benefit:**

- Direct export of color data from Prinect Color Toolbox to central color data base!
- CxF files can be used for external purposes

Links to Prinect Color Toolbox 2021.10-documentation in Prinect Know How:

EN [Enhanced function for exporting measurement data](#)

DE [Erweiterung der Funktion zum Export von Messdaten](#)

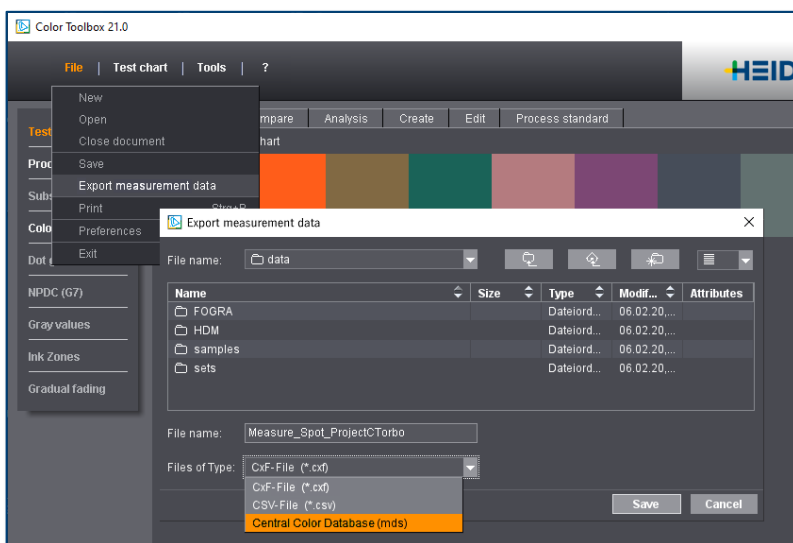


Image: Export measurement data as CxF- file or export data directly to Central Color Database

## 10 Color Toolbox report “Quality Monitor” also for Prinect Image Control

Prinect Image Control 4 no longer includes its own “Quality Monitor” reporting. But the Prinect Color Toolbox now can be used by Prinect Image Control for the same purpose.

### Benefits

- Prinect Color Toolbox menu “Analysis” (known as “Quality Monitor”) has been expanded for specific reporting needs of Prinect Image Control. For example now there is a filter function for jobs and the job’s preview image is shown.
- The control strips and Mini Spots can be chosen (if several ones are on the sheet)
- The menu “Analysis” offers considerably more options than the former Image Control “Quality Monitor”. This means extended functions for Prinect Image Control 4. For example a gray balance check or comparisons with different standards are possible.

### Availability:

- As of version Prinect 2021.10.4 and Image Control version S22A\_IC.
- "Color Interface" option of Prinect Image Control now is included as standard feature in the software of Prinect Image Control 4.
- Please note: All Prinect Image Control before version 4 still include the previous “Quality Monitor”.

Links to **Prinect Color Toolbox 2021.10-documentation** in Prinect Know How:

EN

DE

New features:

Neuerungen:

[Prinect Color Toolbox 2021.10 - Connecting Image Control](#)

[Prinect Color Toolbox 2021.10 - Anbindung von Image Control](#)

chapter:

chapter:

[Prinect Color Toolbox 2021.10 \(prinect-lounge.com\)](#)

[Prinect Color Toolbox 2021.10 \(prinect-lounge.com\)](#)

Link to **Product Information Color Workflow** in Easy Sales Portal

EN

DE

[PI 2022 Color Workflow Products EN \(April 2022\)](#)

[PI 2022 Farbworkflow Produkte DE \(April 2022\)](#)

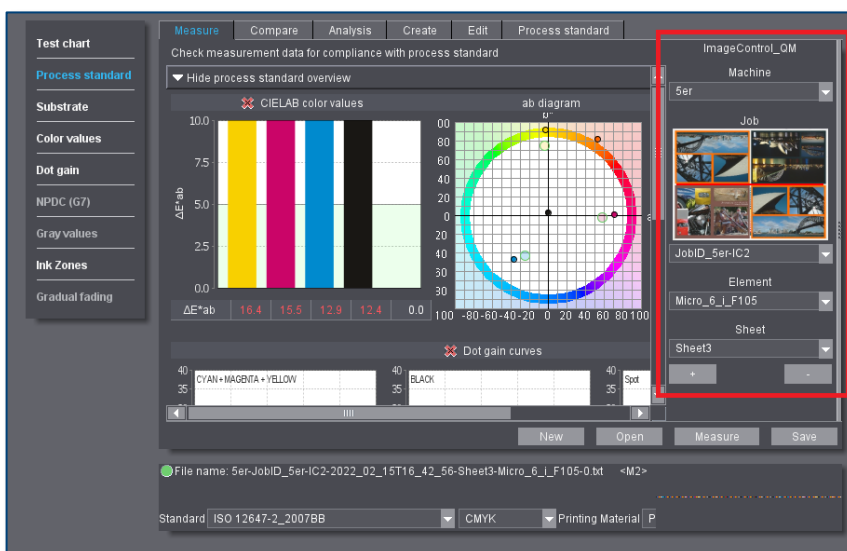


Image:

Prinect Color Toolbox menu “Measure” with preview image and selection menu for control elements.

Job and sheet can be selected and the single measuring can be chosen. There is a list of all control elements available on the sheet.

The chosen print control strip is highlighted (red bar) in the preview image.

### 10.1 IT8 data out of Prinect Image Control can be used for G7 certification

The test form (called IT8.7/5 or TC1617x) contains grey wedges. They can be detected by Prinect Image Control and this measured data can be exported to Prinect Color Toolbox. Here they can be processed, analyzed and used for G7 evaluation.

Availability:

- As of version Prinect 2021.10.8

Links to Prinect Color Toolbox 2021.10-documentation in Prinect Know How:

- EN: [IT8.7/5 \(TC1617x\) can be used for G7 certification](#)
- DE: [IT8.7/5 \(TC1617x\) zur G7-Zertifizierung verwendbar](#)

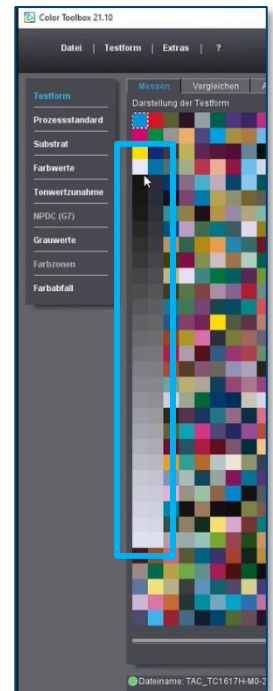


Image: Grey wedges as part of the IT8 test form.

### 11 Connection of X-Rite eXact measuring device via Bluetooth

Prinect Color Toolbox supports the X-Rite eXact not only via USB cable connection but also in Bluetooth mode.

Availability:

- As of version Prinect 2021.10.4

Links to Prinect Color Toolbox 2021.10-documentation in Prinect Know How:

- EN: [Prinect Color Toolbox 2021.10 - X-Rite eXact](#)
- DE: [Prinect Color Toolbox 2021.10 - X-Rite eXact](#)

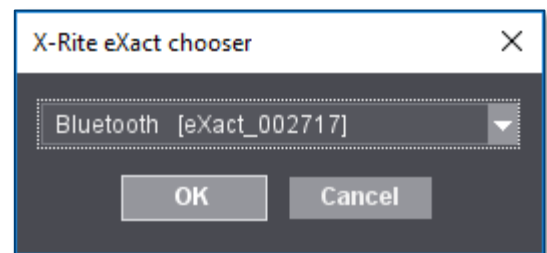


Image: Bluetooth connection between Prinect Color Toolbox and X-Rite eXact.

### 12 Table of handheld measuring devices

The list with the overview of all possible connections of handheld **color measuring devices** (also called “colorimeters”) **to Prinect** can be found in Prinect Know How.

EN:

[Prinect Color Toolbox 2021.10 - Colorimeter Overview](#)

DE:

[Prinect Color Toolbox 2021.10 - Überblick Farbmessgeräte](#)

It is followed by specific information for some of the measuring devices such as

- Konica Minolta FD-7 and FD-9 (MyIro-9) and CM-26d
- X-Rite i1Pro, i1 iSis2, eXact
- Techkon SpectroDens.

# Prinect Multicolor

## 13 Prinect Multicolor-improvements in Prinect Workflow

### 13.1 Mixed screening scheme for Multicolor directly available

Prinect Multicolor is a printing process with 7 colors and therefore needs 7 plates. Our recommended screening for Prinect Multicolor is a mixed screening of:

- AM screening for the process colors Black, Cyan, Magenta, Yellow
- combined with FM screening for Violet, Green and Orange.

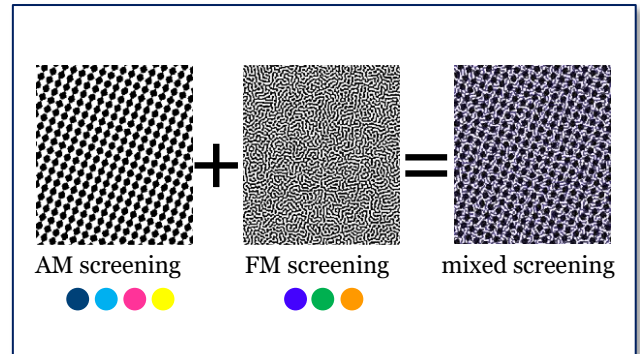


Image: Mixed screening for Multicolor

#### The benefits of mixed screening:

- Avoids Moirée and uses the space on the plate in an optimized way.
- Enables more contrast and details in images.
- Increases protection against imitation of products because this mix of screening cannot be imitated easily in printing.

Up to now this screening scheme had to be composed by the user himself using the “Screening Editor”.

#### New:

This specific mixed screening scheme is available as “7c-CMYK-AM-OGV-FM-TIFFB” in the ImpositionOutput sequence under “Screen System Settings” and can be used immediately. The “Screening Editor” is no longer needed.

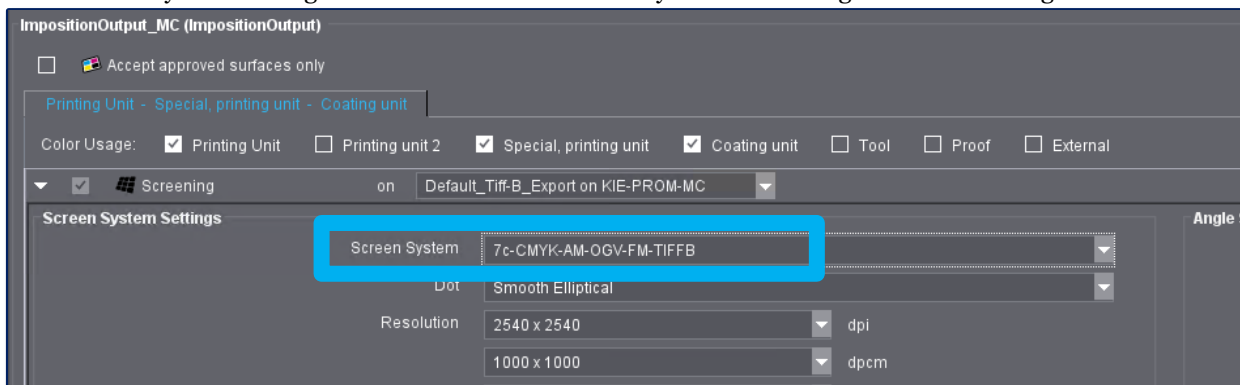


Image: Mixed screening ready to go available in Prinect Cockpit.

#### Benefit:

- Quick generation of a Multicolor sequence.

### 13.2 Excluding Marks and Images from Multicolor separation made easy

Using the Multicolor process all parts of the plate are separated with 7 colors. The color calculation program (called “Color Management”) calculates for the entire layout the adequate simulation by some of the 7 available colors. But some parts of the plate better remain in pure solids or only CMYK separation.

Up to now these parts had to be hidden for the Multicolor calculation by “manually” masking them in the layout.

#### New 1:

The Button “Disable Color Management for Marks” can be switched on and then excludes all marks from Multicolor separation. All marks (such as register marks, print control strips, APSC marks, ...) generated by the Prinect Signa Station remain in clear CMYK and OGV colors (they will not be composed by several colors).

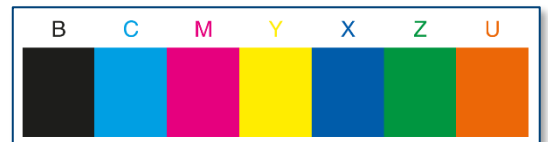


Image: Print control strip parts shall remain solids.

#### Benefits:

- Keeps marks authentic which is necessary for measuring purposes.
- Saves user’s time (masking of parts of the layout is no longer necessary).

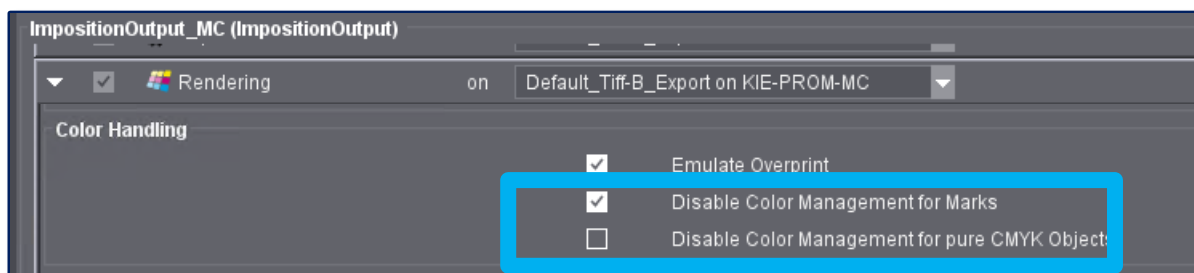


Image: Hide marks and CMYK objects in order to remain like they are (not composed by 7 colors)

#### New 2:

The Button “Disable Color Management for pure CMYK Objects” can be switched on. This function excludes all images - created by only CMYK and no spot color - from Multicolor separations. This is for users who desire to keep CMYK images in pure CMYK. (The possibility to add brilliance to some images by using a 7 color separation certainly remains available for those users wishing it.)

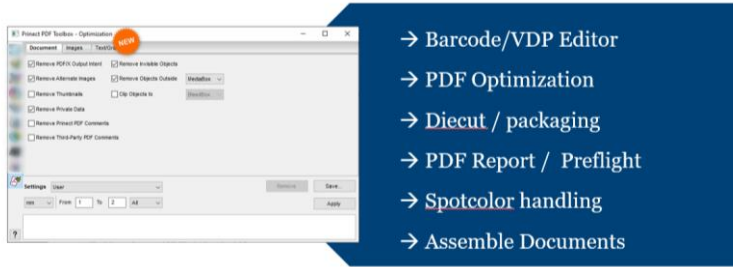
#### Benefits:

- Avoids undesired changes in CMYK pictures.
- Saves user’s time (masking of images is no longer necessary).

Links to Prinect KnowHow portal:

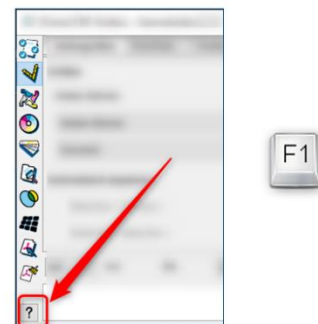
- EN: [Online Help - Prinect Cockpit 2021.10](#)
- DE: [Online-Hilfe - Prinect Cockpit 2021.10](#)

# Prinect PDF Toolbox

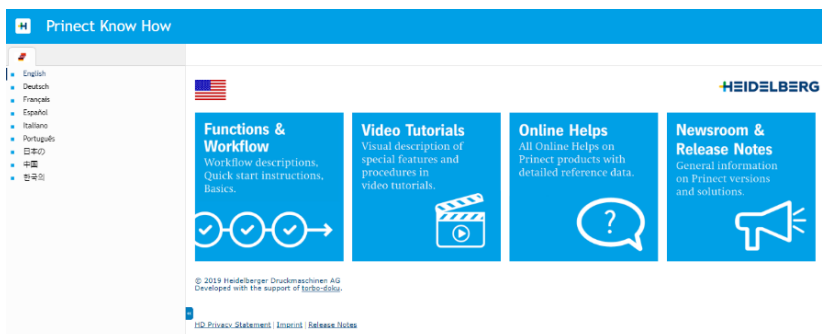


Your „tried-and-tested problem solver” got several improvements within the cumulative update packages delivered since the release of Prinect 2021.10 last year in all the areas listed left.

We will share more information in the following chapters, but would first of all like to make you aware that you always have the chance to reach the Prinect PDF Toolbox documentation by either clicking the question mark **?** or pressing **F1** inside the application. → This will context-sensitively guide you directly to the corresponding chapter of your versions online help.



The online help, as well as many [Video Tutorials for the Prinect PDF Toolbox](#) can be found inside the Prinect Know How-Portal that opens when you click on the picture below ↓ - or use a tablet of phone to scan the QR code ↗.



We share links to video tutorials in English and German in this Product Information. In the other language sections there may be subtitles available to the English videos.

## 14 MAC OS 13.2 (Ventura) native mode support from Prinect PDF Toolbox 2021.10.15

Prinect can be used on Mac computers running on Mac OS 13.2 (Ventura) from cumulative update version 2021.10.15 onwards. This is especially beneficial for our Prinect PDF Toolbox, as it is an Acrobat Plug-In. Acrobat is more powerful in native mode and our Plug-In application benefits from this, especially when it comes to handling big, complex PDF files.

## 15 Barcode/VDP Editor News

### 15.1 Additional Standards supported in QR / Data Matrix generation

#### GS1 as QR- and Data Matrix

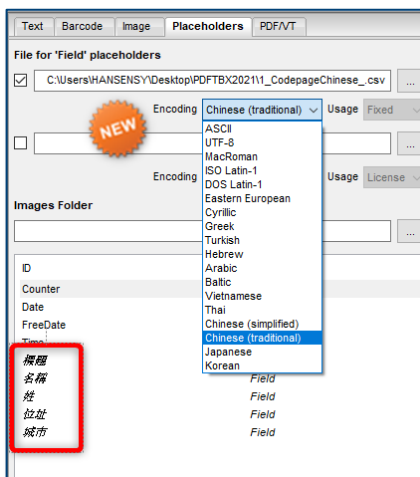
The 3 dimensional codes „Datamatrix“ and „QR“ support the [GS1](#) standard now exactly as well as the 2-dimensional code „GS1-128“ already did in former versions. With the **GS1 QR** placed on a printed product, consumers can easily access advanced product information from the Internet, for example on allergies or origin, scanning it with a mobile phone or tablet.

#### PPN as Data Matrix

The Barcode Editor is now capable to work with the special pharmacy product identification code **PPN** (Pharmacy Product Number) and generate a suitable Data Matrix Code

### 15.2 Great features for working with variable data from CSV files

#### Improvements working with CSV files with different languages



It is now possible to work with CSV files with ANSI encoded character sets (in addition UTF-8) and to choose the language for a code page to see the dynamic placeholders now in the one of the supported languages, which are displayed in drop down menu in tab “placeholders”.

For customers using 1 byte languages in the CSV, PDF Toolbox 2021 has an “Automatic” character set that selects the most appropriate character set suitable for all used languages. Non-existent characters are known to be represented as "???".

It is even possible to switch the character set from record to record. Excluded are 2byte fonts such as Arabic, Chinese, Hebrew, etc.

#### Attention!

- It is not possible to check whether the selected font contains the language letters of the individual languages. This can only be done in a preflightchecking for usage of “notdef”
- Unicode needs the “ArialUnicodeMS” font installed on the system. As Microsoft has stopped maintaining and updating Arial Unicode, "Unicode" is no longer installed with the Office Package and you need a separate license for this.

#### Step & Repeat

In version 2021 the step & repeat functionality got enhanced. Since then it is possible to repeat dynamic marks for text, barcodes or images horizontally and vertically in predefined distances and fill them with data from the CSV file accordingly. To show how efficiently this works we have now provided a video tutorial linked here in English and German:

[PDF Toolbox Barcode Editor - Step and Repeat](#)

[PDF Toolbox Barcode Editor - Step and Repeat \(DE\)](#)



## Cut & Stack



This useful functionality that helps to arrange the CSV data records on the printed sheets in a way that you can cut the sheets into stacks that only have to be put on top of each other to get the correct order of the data records – without manual sorting. This functionality has been around for a while. Now we also have a video tutorial showing how this works available in Prinect KnowHow.

[PDF Toolbox - Barcode Cut & Stack \(EN\) - Video](#)

[PDF Toolbox Barcode Editor - Schneiden & Stapeln \(DE\)](#)

## New placeholder type "Text"

With the placeholder "Text", you can now edit the content of several texts or barcodes at the same time for templates with multiple rups, please find more info here: [Placeholder Type Text](#)

## 15.3 Variable colors

With this new feature you can create numerous designs with little effort.

This is done by randomly selecting the text color and background color from a color table as shown in the corresponding video tutorial:

[Barcode and VDP Editor - Variable Colors](#)  
[Barcode und VDP Editor - Variable Farben \(DE\)](#)



## 15.4 Random Image Generation



This is another new functionality to effortlessly generate different designs by cutting tiles out of a larger image. These can be further varied by rotation, mirroring and an offset in horizontal and vertical direction.

[EN - Random Image Generation](#)

[DE - Zufällige Bildgenerierung](#)

## 16 PDF Optimization

Several enhancements made their way into our PDF Optimization that is part of our „Object Editor“ license.

This tool also known from the Prinect Prepare sequence offers various functions for optimization of your PDF files (e.g. minimize the file size), making them optimally prepared for the next steps in the workflow. It is possible to clean up redundant elements like comments and invisible objects, scaling down and compressing images up to converting texts to graphics.

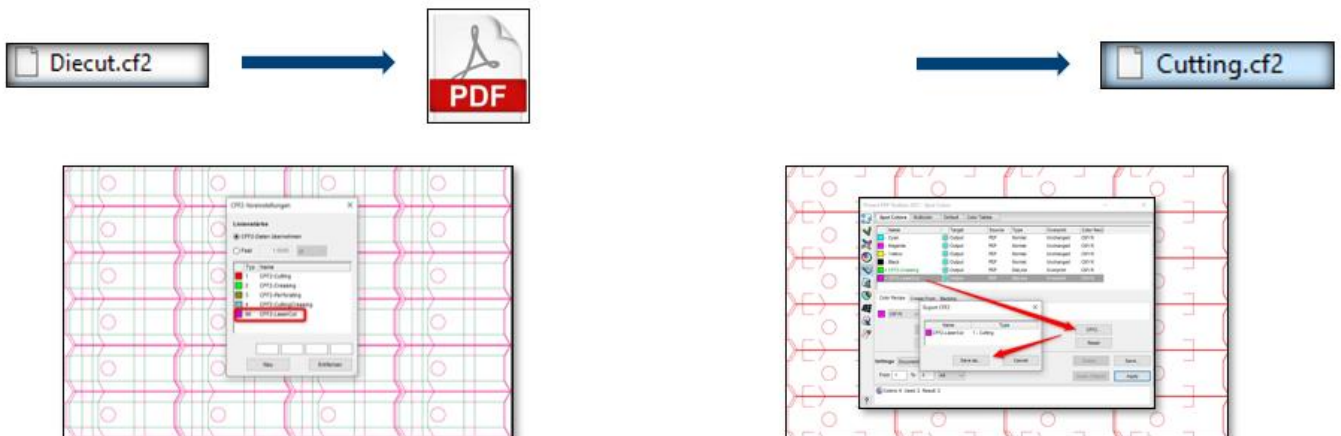
New functionality that was added in recent releases is:

- Resample and compress color- or greyscale images and bitmaps
- Remove alternate images, PDF comments or PDF/X-Output-Intent
- Remove invisible (covered) objects within content or outside of media,- trim or bleedbox
- Convert text to graphic
- Choke graphics
- Turn small graphics into Bitmaps

## 17 Diecut and packaging enhancements

### CFF2 import:

When importing CFF2 files it is possible to set a default for the line type, e.g. “cutting”, “creasing”, “perforating” and “cut creasing”. If, for example you set the default for “Line 90” to “Lasercut“, importing a CFF2 line will export a correct Lasercut file.



### 17.1 Show Effects:

The Show Effects functionality got its display of special effects and refinement separations especially reflexions at Export improved. In addition to this, because exporting the results as 3D PDF sometimes causes issues with the representation of effects, we added the possibility to export the 3D views also as HTML file.

## 18 PDF Report / Preflight

### 18.1 New GWG Preflight sets

Based on the preflight standards of the Ghent Workgroup, the Prinect PDF Toolbox (as well as the Preflighter inside the workflow) has been improved by the following checks and preflight sets according to the GWG2015 specification (ISO standard 19593-1/GWG2015):

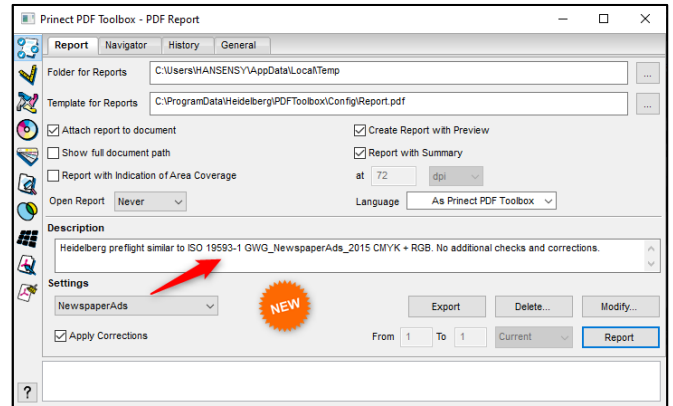
- Newspaper Ads
- Magazine Ads
- Sheet CMYK
- Sheet Spot

In addition to this, the “Plus” sets

- Newspaper Ads Plus
- Magazine Ads Plus
- Sheet CMYK Plus
- Sheet Spot Plus

containing additional HEIDELBERG specific sensible checks and content corrections

can be chosen in the Toolbox (or for use in the workflow)



### 18.2 Other Preflight enhancements – with new tab for PDF/VT checks

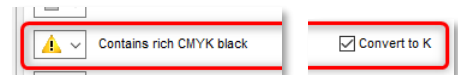
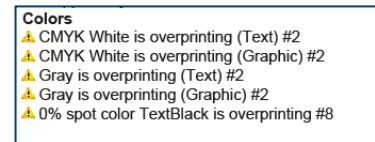
**Document PDF/X:** - check for „PDF/X Output intent is not...”



**Image:** - check for resolution of full page images

**Content:** - check for blending color space (transparencies)

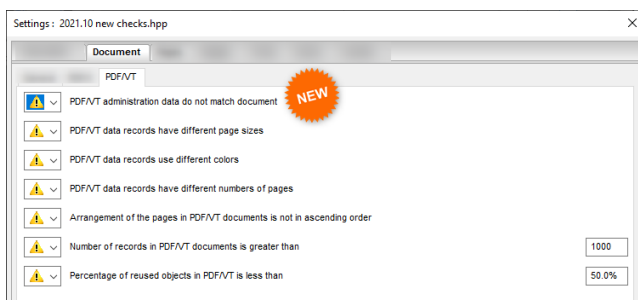
- Colors:**
- improved check for „spot color with conflicting names“:
    - post fix checks upper or lower case
  - new check for different colors use the same color recipe
  - improvement for check with fine lines
  - check for overprint of white & grey shows kind of object
  - convert rich black to pure black



**Adding Bleed:** - Page filling images can optionally be scaled



### New tab with checks for PDF/VT:

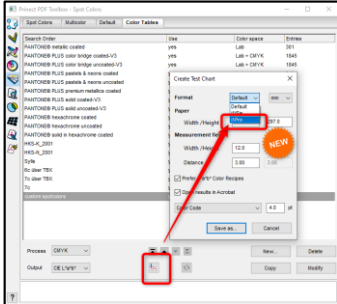


Working with PDF/VT has some characteristics resulting in preflight requirements, e.g. checks for data records with differences in page sizes, colors, or amount of pages; checks of the page order; checks for the number of records and the amount of reused objects useful for efficiently printing

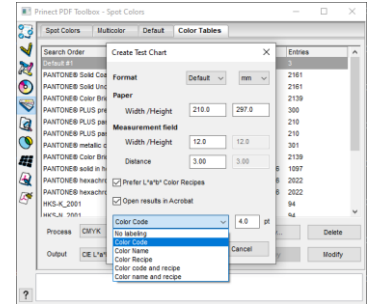
All those are now conveniently clustered in an extra tab which makes it easier to find them and make special preflight checks for PDF/VT documents.

## 19 Spotcolor handling

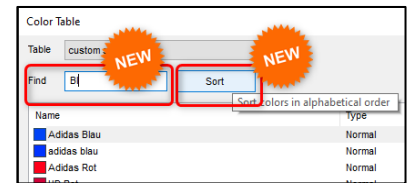
When creating test charts, those can be saved in different formats ensuring that they can be automatically measured with the appropriate measuring device. In earlier versions there only used to be choice of exporting a test form in the format for the "i1is1s" – as explained in this [video](#).



We now added the format for the "i1Pro" – and a "Default" one that can be used to create a **standard form** for other devices or visual control with appropriate labeling.

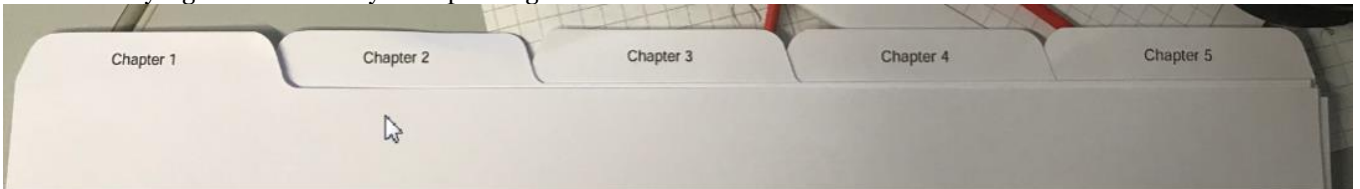


In addition, finding and sorting color names was made more comfortable: a simple click sorts the colors and it needs to only parts of the name entered to display the color containing that string on top of the list.



## 20 Assemble Documents

Assemble Documents lets you link up PDF files, separate them by index sheets and add blank pages to them so that you can e.g. create printed training material quickly and efficiently. We have now improved the overview with boundary lines, alternating gray coloration, and easier editing. On top of this it is possible to split the document in chapters. It is definitely a great tool for easy "Tab printing" with the Versafire.



Tab printing with Versafire.

# Important Announcement: Prinect Database Engine upgrade necessary soon

## 21 Prinect Database Engine needs an Upgrade to Microsoft SQL Server 2022

With this info we provide an early warning about an upcoming upgrade of our MSSQL database engine used in Prinect towards the end of the year 2023. Following the official release of MSSQL 2022 Server by Microsoft, we are now working on an upgrade schedule. More exact dates will be communicated this summer.

## 22 Important notices / hints to the upcoming Microsoft SQL Server upgrade

### 22.1 All Prinect Workflow installations are affected by the MSSQL upgrade

The upgrade affects ALL Prinect Workflow installations, no matter if they are using the integrated **Microsoft SQL Server Express Edition** and or the Prinect Data Center using the **Microsoft SQL Server Standard Edition**. From a certain point of upgrade the Prinect Workflow works with the Prinect Database Engine version of SQL Server 2022, only. **The Prinect Workflow is not intended to be downward compatible to the former Microsoft SQL Server 2017 database engine.**

### 22.2 Prinect Data Center upgrades

In case you have purchased a Prinect Data Center with Microsoft SQL Server licenses and are on an active Prinect Data Center maintenance contract, you will benefit from our standard upgrade process which includes Microsoft SQL Server license upgrade. For the new Prinect Database Engine version no additional Microsoft SQL Server license fees will be conducted.

Should you have purchased a Prinect Data Center with Microsoft SQL Server licenses but have no active Prinect Data Center maintenance contract, you must purchase a new Prinect Data Center to upgrade to the new Prinect Database Engine.

Those of you who purchased a Prinect Data Center w/o Microsoft SQL Server license must setup a new Prinect Data Center installation project and must provide Microsoft SQL Server 2022 software and license to be able to upgrade to the new Prinect Database Engine.

### 22.3 Operating system requirements for new database engine Microsoft SQL Server 2022

Some well-established operating systems are not supported by this new Microsoft SQL Server version any longer. Please be aware that **operating system upgrades must be done BEFORE upgrading the Prinect Database Engine**. The following operating systems are **NOT released for Microsoft SQL Server 2022** any longer:

- **Microsoft Windows 7, & 8.1; Microsoft Server 2012R2**

Kind regards

Product Management Prinect

## 23 Appendix

### Release Dates of Cumulative Update Packages – t.b.ctd.

	<b>Release</b>	
21.10.1	27.10.2021	
21.10.2	22.12.2021	
21.10.3	02.02.2022	
21.10.4	02.03.2022	
21.10.5	06.04.2022	
21.10.6	27.04.2022	
21.10.7	08.06.2022	
21.10.8	28.07.2022	
21.10.9		Features released with 2021.10.10
21.10.10	14.09.2022	
21.10.11	05.10.2022	
21.10.12	23.11.2022	including Business Manager 7.27
21.10.13	08.02.2023	
21.10.14		Features to be released with 2021.10.15
21.10.15	29.03.2023	including Business Manager 7.28;
21.10.16	19.04.2023	
21.10.17	Planned for May 2023	