

Product Information **Prinect Business**

Version 7.32



June 2025

Dear Prinect User,

The Prinect Team at Heidelberger Druckmaschinen AG is pleased to announce the availability of the new Prinect Business Manager version 7.32 and to provide you with an overview of the key innovations in this document.

In this document you will find many links to in-depth information. You can decide whether the new features are so relevant that you want more information. We then forward to the "[Prinect Newsroom](#)" or the "[Prinect Online Help](#)", where more in-depth information, be it videos, texts or Power Points are available.

Last year we officially announced the new Prinect Business Manager Video Tutorials. You can find them in our Prinect Lounge on: [Prinect Video Tutorials \(prinect-lounge.com\)](#). Please feel free to take a look at them.

The table of contents on the next page will give you an initial overview. The online tool "[Prinect Know How](#)" is available for more details. More information on the Operating Systems supported with Prinect CR is available [here](#).

Our Product Information documents on Continuous Releases provide information on Prinect CR changes relevant for [Prinect Production Commercial](#). At the same place you can also find all information on Prinect CR changes relevant for [Prinect Production Packaging / Label](#).

IMPORTANT:

For the installation of Prinect Business Manager version 7.32 with the Prinect Production workflow at least Prinect CR Version 5055.0.9 is required. Compatibility is ensured via Cumulative Update Packages provided in your Prinect Maintenance Center.

Content

| | |
|--|-----------|
| Prinect Business Manager | 4 |
| 1 General improvements | 4 |
| 1.1 New language supported | 4 |
| 1.2 Add final production date as look up criteria in take jobs out of WIP | 4 |
| 1.3 Blocking certificates available | 4 |
| 2 Calculation improvements | 5 |
| 2.1 Paperchoice in Ganging | 5 |
| 2.2 Precutting in Ganging | 6 |
| 2.3 Precutting in the Speed Estimator | 8 |
| 2.4 Improvements for version position letters | 10 |
| 3 Workflow / integration improvements | 11 |
| 3.1 Add <DeviceColorantOrder> in <ColorantControl> in JDF | 11 |
| 3.2 JDF needs to understand “sheeting” and send the information to Prinect | 12 |
| 4 Packaging improvements | 13 |
| 4.1 Free rotation of shape/product as grain direction | 13 |
| 4.2 Add approver selection to product wizard | 14 |
| 5 General improvements for version 7.32 – CERM Online Help | 15 |

Prinect Business Manager

1 General improvements

1.1 New language supported

Prinect Business Manager supports with version 7.34 a new language: “Latvian – 37”.

1.2 Add final production date as look up criteria in take jobs out of WIP

In a previous versions we implemented the new field “final production date” in the job module.

When looking up the jobs in the 'Take jobs out of WIP' module today it is not possible to look up for the “last production date” because it was not yet implemented. When locking, customers currently call up all orders that are not locked (because sometimes not they are not shipped and/or not invoiced at the expected time or delivered earlier than expected...), but this means that Business Manager always delivers a lot of “unnecessary” orders in the list.

With the new look up field for the “final production date” you can now easily look for the right jobs and save a lot of time.

Benefits:

→ Time and cost savings through getting faster look up results

Details on this new feature are also available in the [*Prinect Online Help V7.32*](#).

1.3 Blocking certificates available

If a customer would like to remove one certificate that has been replaced by one or two other certificates, this is not possible today. Because there are many jobs linked with this certificate, it makes sense to block the mentioned certificate.

With the new version it is now possible to block certificates if they are not used any more. Because these certificates are linked in many tables (not only jobs), it is now possible to see in the affected lists and grids that this certificate is blocked and not in use any more.

Details on this new feature are also available in the [*Prinect Online Help V7.32*](#).

2 Calculation improvements

2.1 Paperchoice in Ganging

Today in the Ganging wizards the user is asked to select Material IDs for paper and optionally one or more carton dies. In the specific use case that one existing die cut tool is selected, the layout for printing is in fact already known. The user could choose a paper that matches the size of the die cut tool best. At the moment the largest paper available is chosen automatically (if a substrate is known). In the new release the system provides more information so that the user can decide better what paper suits best.

In general Prinect Business Manager distinguishes 3 different (ganging) wizards:

Ganging wizard for quotes, Ganging wizard for sales orders (for products) and a Wizard for re-exporting a gang job.

The first improvement is that in the **ganging wizard for quotes (“New estimate with Ganging”)**, the selection of paper and die cut tool is switched in the flow of the wizard. Now the die cut tool screen comes first, then the paper selection follows. With that change the basic requirement was met to optimize the paper choice.

In the ganging wizard for sales orders, tabs are used instead. Nothing has changed there.

The wizard for re-export a gang job was already designed that the paper selection came last in the wizard flow.

Define the paper:

Paper type = GLOS-D Gloss coated
 Substrate ID = 80081D PACK120-1
 Grammage = 0.00 g/m²
 Width = 0 mm
 Material
 Colour
 Quality
 Certificate

| ID | Keyword | Description 1 | General | Width | Length | Grain direction | Site | Grammage | Criterion | In st | In pr | OK b | Precutting | Reserved | Available | Final stock | Unit | Utilization | Positions | n stock | n production |
|--------|------------|---------------|---------------------------------|--------|----------|------------------|------|------------|-----------|-------|-------|------|------------|----------|-----------|-----------------|----------------------|-------------|-----------|------------|--------------|
| 100691 | GLOSS | Gloss coated | WHI 120 g/m² 960 mm x 960 mm L | 960 mm | 960 mm | Long grain (LG) | | 120,00 002 | | | | | | | 0 | 1,000,000,000 | 1,000,000,000 sheets | 100 % | 4 | 1,000,000 | |
| 100695 | GLOSS | Gloss coated | WHI 120 g/m² 960 mm x 700 mm L | 700 mm | 960 mm | Long grain (LG) | | 120,00 002 | | | | | | | 0 | 0 | 0 sheets | 105 % | 4 | 0 | |
| 100699 | GLOSS | Gloss coated | WHI 120 g/m² 699 mm x 499 mm B | 499 mm | 699 mm | Short grain (SG) | | 120,00 002 | | | | | | | 0 | 0 | 0 sheets | 107 % | 2 | 0 | |
| 100002 | GLOSS | Gloss coated | WHI 120 g/m² 1000 mm x 700 mm L | 700 mm | 1,000 mm | Long grain (LG) | | 120,00 001 | | | | | | | 25,629 | 250,013,864,365 | 250,013,864,3 sheets | 107 % | 4 | 250,013 | |
| 100695 | GLOSS | Gloss coated | WHI 120 g/m² 1000 mm x 520 mm B | 520 mm | 700 mm | Short grain (SG) | | 120,00 001 | | | | | | | 0 | 10,000,000 | 10,000,000 sheets | 112 % | 2 | 10,000,000 | |
| 100759 | GLOSS-PREC | Gloss coated | WHI 120 g/m² 1020 mm x 720 mm L | 720 mm | 1,020 mm | Long grain (LG) | | 120,00 002 | | | | | | | 0 | 0 | 0 sheets | 113 % | 4 | 0 | |
| 100763 | GLOSS-PREC | Gloss coated | WHI 120 g/m² 510 mm x 360 mm L | 360 mm | 510 mm | Long grain (LG) | | 120,00 002 | | | | | | | 0 | 0 | 0 sheets | 113 % | 1 | 0 | |
| 100629 | GLOSS | Gloss coated | WHI 120 g/m² 1050 mm x 750 mm L | 750 mm | 1,050 mm | Long grain (LG) | | 120,00 002 | | | | | | | 44,251 | 955,749 | 955,749 sheets | 121 % | 4 | 1,000,000 | |

With the new improvement Prinect Business Manager can now suggest the best possible paper in case a die cut tool is selected. The wizard preselects the best matching paper so that no manual changes are necessary. In case that no die cut tool or more than one die cut tool is selected it won't change the existing behaviour and still the biggest possible paper format will be selected. With that change we can ensure that in most cases the optimal paper selection will be suggested automatically.

Benefits:

- More convenient paper handling

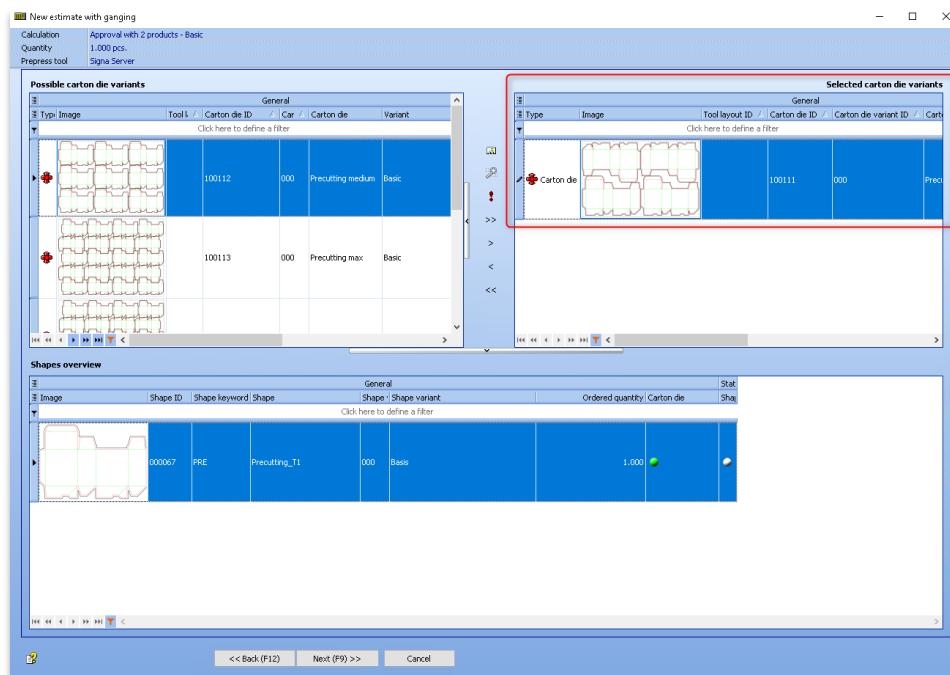
Details on this new feature are also available in the [Prinect Online Help V7.32](#).

2.2 Precutting in Ganging

In the Ganging wizards the user is asked to select plate templates, Material IDs for paper and optionally one or more carton dies. These plate templates and papers have a specific size. Prinect Signa Station can only handle materials that are smaller than the plate sizes for a specific printing machine. This means it can't handle precutting of stock paper. When a large paper is selected, the small presses drop out. An other user request is that if the calculator chooses a specific existing die cut tool, he prefers to have a material that fits the tool. If the user selects a large stock paper, Prinect Signa Station is not able to place the die cut tool multiple times on the paper. The more specific user requirement for PBM is to precut the large material to optimize paper usage and avoid paperloss.

Until now the width and the height that Prinect Business Manager puts in the XML request to Prinect Signa Station was the selected paper size. In this release Prinect Business Manager will be smarter and suggests a better print sheet size.

- If an existing die cut tool, and only one is selected, then the size of the tool, if available, can be used to calculate a more suitable width and height. The system will calculate the precutting possibilities on the selected paper. In case the die cut tool fits multiple times on the paper, the width, height and grain direction of the cut paper will be used.



- The other use case is that multiple die cut tools are selected or if no tool is selected. Then we don't have a concrete size to work with. In the case that the selected paper is bigger than the plate size, then this combination was previously ignored. Now the system will check if the plate size would fit multiple times on the paper. If so, the paper can be precut and the resulting precut size values will be passed to Prinect Signa Station. When PBM is importing a Prinect Signa Station solution where the print sheet size is different of the stock paper size, precutting will be added to the process net. And of course less stock sheets are needed to obtain the requested amount of print sheets.

Jobs

General Technical data

Group Description Customer ID Customer keyword Multiple cus Prepress template No. of sales orders

Click here to define a filter

1 Sales orders ganging 100002 HEIDELBERG GANGING/PACKAGING_XL_ALL_OHNE_PAPIER 4

Carton die variant General Papers

Select the possible paper materials:

Details >>

| ID | Keyword | Description 1 | Substrate ID | Grammage | Market price | Unit | Utilisatio | Positions | Precutting | Stock | Price |
|--------|---------|---------------------|---------------------------------------|---------------|---------------|------------------------|--------------|-----------|-------------------------------------|-------|-------|
| 100002 | GLOSS | Gloss coated | WHI 120 g/m² 1000 mm x 700 mm L | 800810 | 120,00 | 100,00000 sheet | 107 % | 4 | <input checked="" type="checkbox"/> | | |
| 100009 | GLOSS | Gloss coated | WHI 120 g/m² 1000 mm x 700 mm B | 800810 | 120,00 | 100,00000 sheet | 142 % | 3 | <input checked="" type="checkbox"/> | | |
| 100628 | GLOSS | Gloss coated | WHI 120 g/m² 1050 mm x 750 mm B | 800810 | 120,00 | 14,18000 sheet | 160 % | 3 | <input checked="" type="checkbox"/> | | |
| 100629 | GLOSS | Gloss coated | WHI 120 g/m² 1050 mm x 750 mm L | 800810 | 120,00 | 83,63000 sheet | 120 % | 4 | <input checked="" type="checkbox"/> | | |
| 100763 | GLOSS-P | Gloss coated | WHI 120 g/m² 510 mm x 360 mm L | 800810 | 120,00 | 500,00000 sheet | 112 % | 1 | <input type="checkbox"/> | | |
| 100684 | GLOSS | Gloss coated | WHI 120 g/m² 700 mm x 520 mm L | 800810 | 120,00 | 40,00000 sheet | 222 % | 1 | <input type="checkbox"/> | | |
| 100685 | GLOSS | Gloss coated | WHI 120 g/m² 700 mm x 520 mm B | 800810 | 120,00 | 40,00000 sheet | 111 % | 2 | <input checked="" type="checkbox"/> | | |
| 100689 | GLOSS | Gloss coated | WHI 120 g/m² 699 mm x 499 mm B | 800810 | 120,00 | 40,00000 sheet | 106 % | 2 | <input checked="" type="checkbox"/> | | |
| 100690 | GLOSS | Gloss coated | WHI 120 g/m² 699 mm x 499 mm L | 800810 | 120,00 | 5,00000 sheet | 212 % | 1 | <input type="checkbox"/> | | |
| 100691 | GLOSS | Gloss coated | WHI 120 g/m² 980 mm x 680 mm L | 800810 | 120,00 | 500,00000 sheet | 203 % | 2 | <input checked="" type="checkbox"/> | | |
| 100692 | GLOSS | Gloss coated | WHI 120 g/m² 980 mm x 680 mm B | 800810 | 120,00 | 500,00000 sheet | 203 % | 2 | <input checked="" type="checkbox"/> | | |
| 100693 | GLOSS | Gloss coated | WHI 120 g/m² 680 mm x 680 mm L | 800810 | 120,00 | 500,00000 sheet | 141 % | 2 | <input checked="" type="checkbox"/> | | |
| 100694 | GLOSS | Gloss coated | WHI 120 g/m² 680 mm x 680 mm B | 800810 | 120,00 | 500,00000 sheet | 141 % | 2 | <input checked="" type="checkbox"/> | | |
| 100695 | GLOSS | Gloss coated | WHI 120 g/m² 980 mm x 700 mm L | 800810 | 120,00 | 500,00000 sheet | 209 % | 2 | <input checked="" type="checkbox"/> | | |
| 100696 | GLOSS | Gloss coated | WHI 120 g/m² 980 mm x 700 mm B | 800810 | 120,00 | 500,00000 sheet | 209 % | 2 | <input checked="" type="checkbox"/> | | |
| 100697 | GLOSS | Gloss coated | WHI 120 g/m² 980 mm x 510 mm L | 800810 | 120,00 | 500,00000 sheet | 304 % | 1 | <input type="checkbox"/> | | |
| 100698 | GLOSS | Gloss coated | WHI 120 g/m² 980 mm x 510 mm B | 800810 | 120,00 | 500,00000 sheet | 152 % | 2 | <input checked="" type="checkbox"/> | | |
| 100707 | GLOSS | Gloss coated | WHI 120 g/m² 600 mm x 520 mm L | 800810 | 120,00 | 500,00000 sheet | 190 % | 1 | <input type="checkbox"/> | | |
| 100708 | GLOSS | Gloss coated | WHI 120 g/m² 600 mm x 520 mm B | 800810 | 120,00 | 500,00000 sheet | 190 % | 1 | <input type="checkbox"/> | | |
| 100709 | GLOSS | Gloss coated | WHI 120 g/m² 800 mm x 700 mm B | 800810 | 120,00 | 500,00000 sheet | 171 % | 2 | <input checked="" type="checkbox"/> | | |
| 100710 | GLOSS | Gloss coated | WHI 120 g/m² 800 mm x 700 mm L | 800810 | 120,00 | 500,00000 sheet | 171 % | 2 | <input checked="" type="checkbox"/> | | |
| 100711 | GLOSS | Gloss coated | WHI 120 g/m² 800 mm x 750 mm L | 800810 | 120,00 | 500,00000 sheet | 183 % | 2 | <input checked="" type="checkbox"/> | | |

Keyword Is like Gloss% And Selected Is any of False True Customize...

<< Back (F12) Next (F9) >> Cancel

The paper that comes closest to the minimum paper format without precutting is shown in bold. However, the user can select additional papers here according to the utilisation. The number of positions on the sheet and whether the sheet requires precutting is also shown here as a new column in the grid.

Benefits:

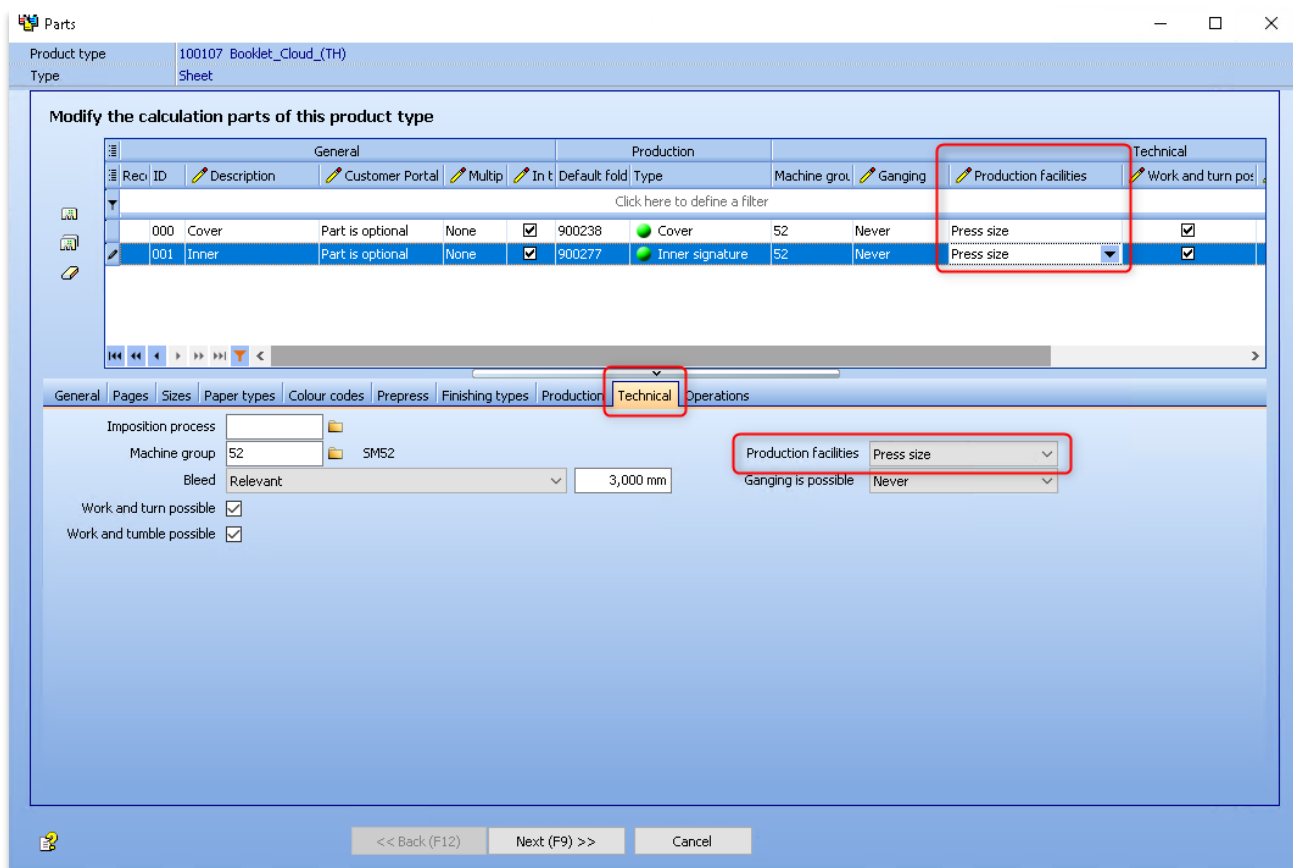
- Optimized paper selection in ganging process

Details on this new feature are also available in the [Prinect Online Help V7.32](#).

2.3 Precutting in the Speed Estimator

In previous versions Material IDs for paper can be already selected in the Speed Estimator. The system will calculate the maximum number of poses on the paper size of the selected paper and then see if it fits on a press. Smaller presses will drop out, if a big paper is selected. But if the stock paper would be cut in half, then it probably will fit on the smaller presses. This use case was not supported since now.

In other wizards where print sheets are created, the option **”press size”** for production facilities will calculate the maximum number of poses of the 1-up on the maximum size of the press. Next, the system searches for the next default standard size defined in the paper type. In case no valid standard size exists, the print sheet size was taken. Later the user had to indicate a Material ID for paper that suits. Until now, it was not possible to select Material IDs for paper upfront for this option. (Previously in the Speed Estimator, if the user selected Material ID for paper, the setting in the product type part for the production possibilities was simply ignored. The system always used the maximum number of poses on the selected paper.)



For the first two options in production facilities, **”printing schemes”** and **”press size”**, the algorithm has now been extended. The system will add a solution for every selected paper. The calculated print sheet size will be compared to the selected paper size. If the print sheet size doesn't fit, then this paper will not be a valid solution. If the print sheet size fits more than once on the paper size, then **”precutting”** will be added to the process net. If the paper is too big for the press, also **”precutting”** will be added to make it fit. The cost for the precutting operation is taken into account and added to the global cost of the production method.

In the example we select an inner signature and the option “**press size**” is chosen. In the paper tab we select two papers with dimension 700 x 1000 mm, both long grain and short grain.

Result:

For the inner signature, the material ID “200615” with short grain, is selected and can be cut in half. Only half of the amount of the print sheets is required. The other selected paper with ID “200614” with long grain is not the best solution, because it is a lot more expensive.

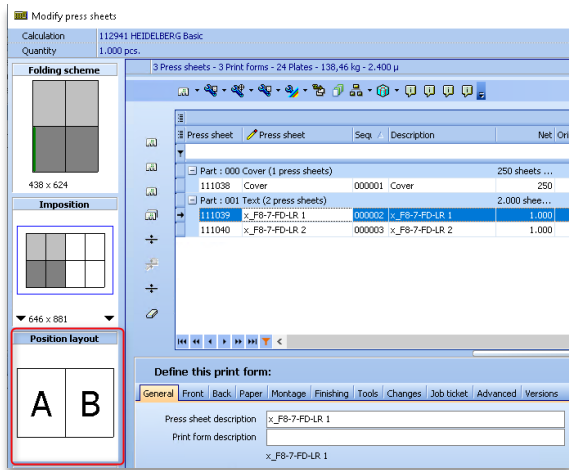
Benefits:

→ Optimized paper selection in Speed Estimation process

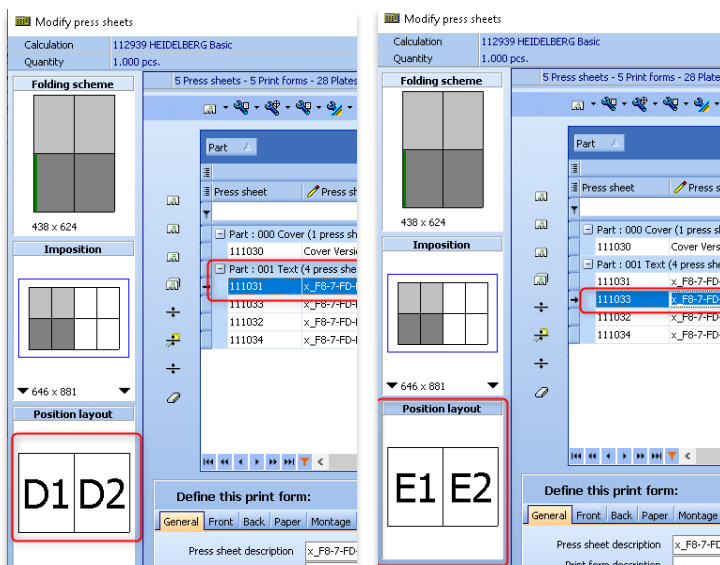
Details on this new feature are also available in the [Prinect Online Help V7.32](#).

2.4 Improvements for version position letters

It is often necessary to place several folded sheets on a printed sheet instead of one folded sheet. For example, if the grammage of a paper is too high to fold it as a 16-page sheet. Instead two 8-page sheets are taken to be placed on the press sheet. This was shown by changing the position letter (A+B). In addition, this letter was also occasionally used for versioning.



The complexity using position letters increases as soon as versions are assigned. With this version, the "Versioning Wizard" uses a new way of displaying different ups in the position layout. The standard letters (A/B) are no longer changed, but instead the section ID is added.



Adjustments in position layout:

In this example, two versions were created (german/english). For the german version, the letter "D" was used and for the english version, the letter "E".

Details on this new feature are also available in the [Prinect Online Help V7.32](#).

3 Workflow / integration improvements

3.1 Add <DeviceColorantOrder> in <ColorantControl> in JDF

With the new entry in the JDF, the exact color sequence can be sent to Prinect without further manual intervention. The marks (X, Z, U, V) will be set according to the sequence from Prinect Business Manager.

Define this print form:

General

Front

Paper

Montage

Finishing

Tools

Changes

Job ticket

Advanced

Versions

Front

Colour

Ink

PMS no.

PMS description

Plate

Ink consump.

Change:

Click here to define a filter

| | | | | | | | | |
|------|-------------|----|-------|-----|-----|------|------|--|
| B001 | <div></div> | B | Basic | | | 0001 | 20 % | |
| B002 | <div></div> | C | Basic | | | 0002 | 20 % | |
| B003 | <div></div> | M | Basic | | | 0003 | 20 % | |
| B004 | <div></div> | Y | Basic | | | 0004 | 20 % | |
| B005 | <div></div> | P1 | PMS | 179 | 179 | 0005 | 20 % | |
| B006 | <div></div> | P2 | PMS | 570 | 570 | 0006 | 20 % | |

Prinect Cockpit [Production, Prepress, Pressroom, Digital, Postpress] - [Hornmtht @ \XIE-HEIPCA4\PTCConfig\SysConfig - 1126.0]

File Edit View Job Tools Help

HEIDELBERG

302243 x +

Overview Name: Colours Number: 302243 Customer Name: Heidelberger Druckmaschinen AG Modified

Colors Payment check Documents Tops Imposition Proof Scheduling Paper order Plates Precutting Print Digital Printing History

Assignment of job colors to mark colors

Automatically per surface

User-defined: Global In layout

Allow spot colors for BCMY

"Process" target: CMYK... else L*a*b*

"Output" target: CMYK... else L*a*b*

Submit print order to press

Output empty separations

Take color definitions for new colors from color tables

Autoremove naming conflicts for new colors

Color List: All Colors

Output Profile: No output profile selected

Column set: none

| Color | Name | Source | Target | Marks | Type | Usage | Lack | C | M | Y | K | L* | a* | b* | ND | Screening |
|---------------|--------|--------|--------|-------|--------|---------------|------|-------|-------|-------|-------|------|-------|------|------|-----------|
| Black | | Job | Output | B | Normal | Printing Unit | | 0.0 | 0.0 | 0.0 | 100.0 | | | | 1.70 | 100.0% |
| Cyan | | Job | Output | C | Normal | Printing Unit | | 100.0 | 0.0 | 0.0 | 0.0 | | | | 0.61 | 165.0% |
| Magenta | | Job | Output | M | Normal | Printing Unit | | 0.0 | 100.0 | 0.0 | 0.0 | | | | 0.76 | 45.0% |
| Yellow | | Job | Output | Y | Normal | Printing Unit | | 0.0 | 0.0 | 100.0 | 0.0 | | | | 0.16 | 0.0% |
| PANTONE 179 C | PAN... | PAN... | Output | X | Normal | Printing Unit | | | | | | 52.9 | 63.9 | 48.2 | 0.00 | 45.0% |
| PANTONE 570 C | PAN... | PAN... | Output | Z | Normal | Printing Unit | | | | | | 74.8 | -33.3 | -2.5 | 0.00 | 45.0% |

New Color Import Colors... Export Colors... Delete Save Close Job

Elements Sequence Status Recent Message Modification Date ID

January 20, 2025 There are new messages: 0 Malfunctions / 0 Warnings / 52 L...

When the data is transferred to the Press Center, the colours can be taken over in the correct sequence without manual intervention.

Benefits:

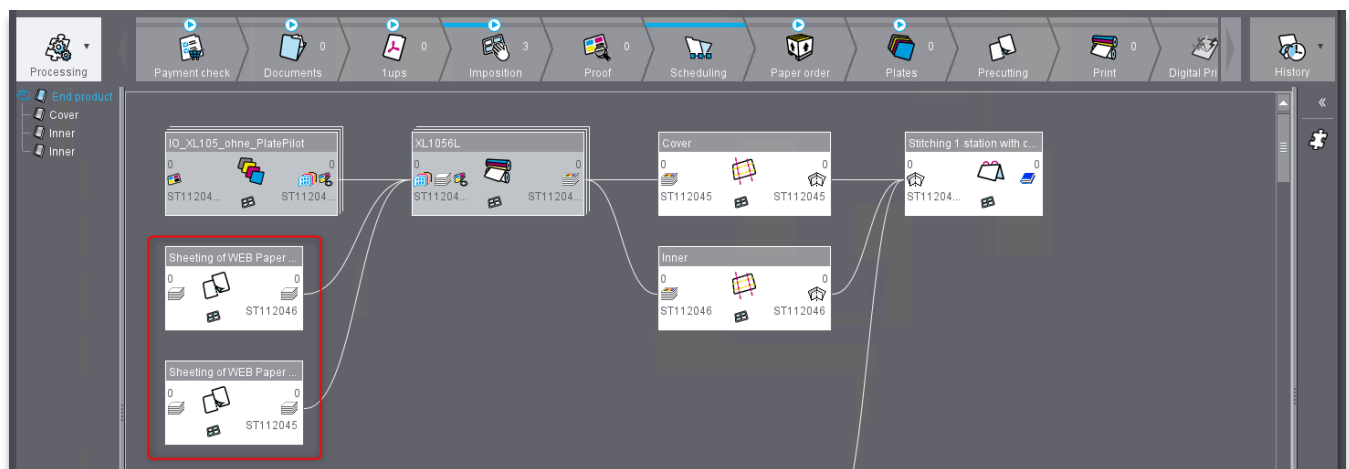
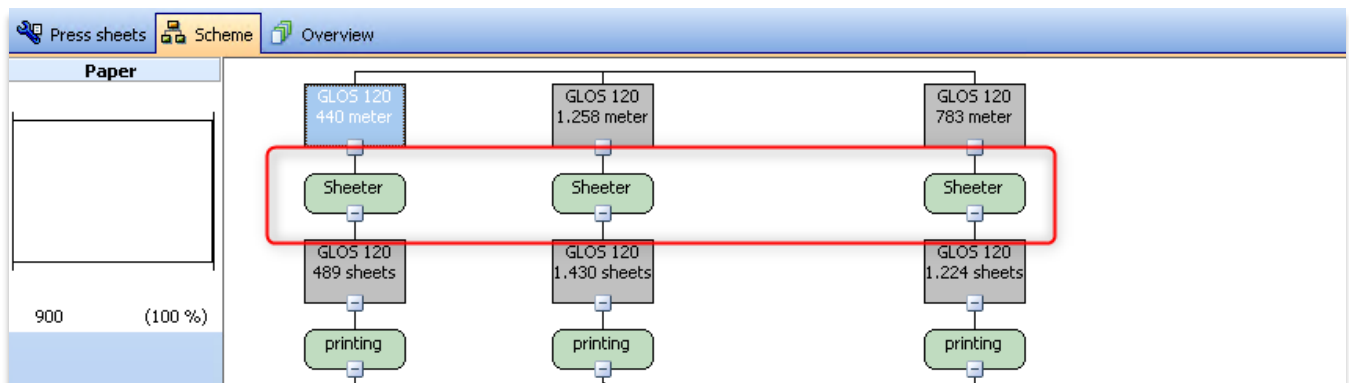
- Reduced touchpoints with more automation in color handling

Details on this new feature are also available in the [Prinect Online Help V7.32](#).

3.2 JDF needs to understand “sheeting” and send the information to Prinect

In the last version we implemented the new “sheeting process” to cut rolls into sheets. Sometimes paper rolls are cheaper than sheets. Due to this fact, print shops prefer to buy rolls instead of sheets. The paper rolls are cut into sheets using a special cutting device. This additional process in production is known as “sheeting”. Sheetting works in a similar way as precutting sheets into processable printing sheets.

With the new release the print sheets are sent correctly to Prinect so that we get a valid process net with a correct device and work step assignment. The process “sheeting” is shown in Prinect as “Sheeting of WEB-Paper”.



Remark: Prinect can currently not interpret “sheeting” and “precutting” at the same time!

Details on this new feature are also available in the [Prinect Online Help V7.32](#).

4 Packaging improvements

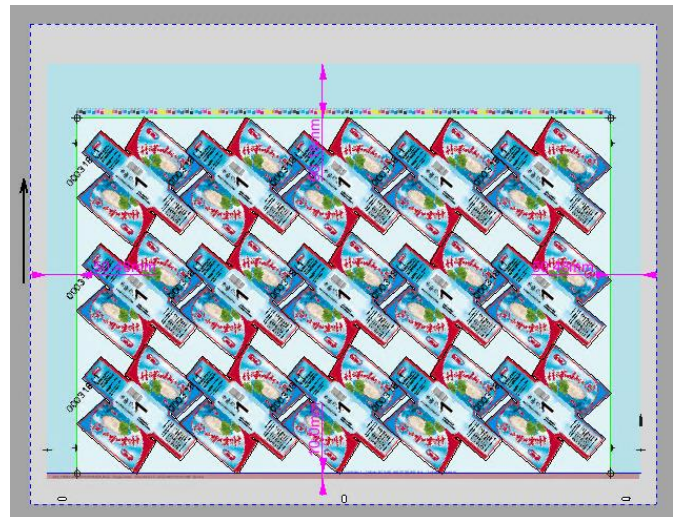
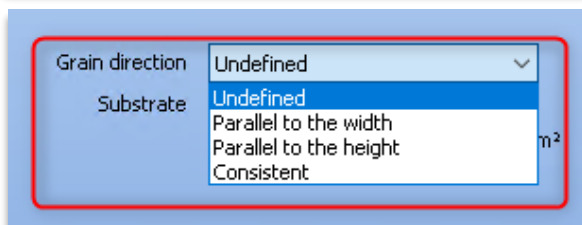
4.1 Free rotation of shape/product as grain direction

In particular, for in mould-die cutting press sheets, a free rotation of the shape is necessary. This solution allows a better result in ganging. The interface to Prinect Signa Station allows a parameter for a free rotation and also the Prinect Signa Station Packaging Pro & Label Pro supports this and calculates the optimized angle of the shape, the product and the press sheet.

To be able to react on that requirement a new grain direction “Consistent” is now implemented in Prinect Business Manager. If “Undefined” has already been used for the “Grain direction”, this setting will be converted to “Consistent”. This means a possible rotation of “0, 90, 180, 270” degrees. The XML “ShapeOrientation” for “Undefined” will now be “Free” (and stands for free rotation).

See also the summarised table below:

| | Definiton in the XLS-file | Change with V 7.32 (XML) |
|------------------------|---------------------------|--------------------------|
| Grain direction | | ShapeOrientation |
| Undefined | empty field or 1 | Free |
| Parallel to the width | X or 2 | Rotate90_270 |
| Parallel to the height | Y or 3 | Rotate0_180 |
| Consistent | XY or 4 | Rotate0_90_180_270 |



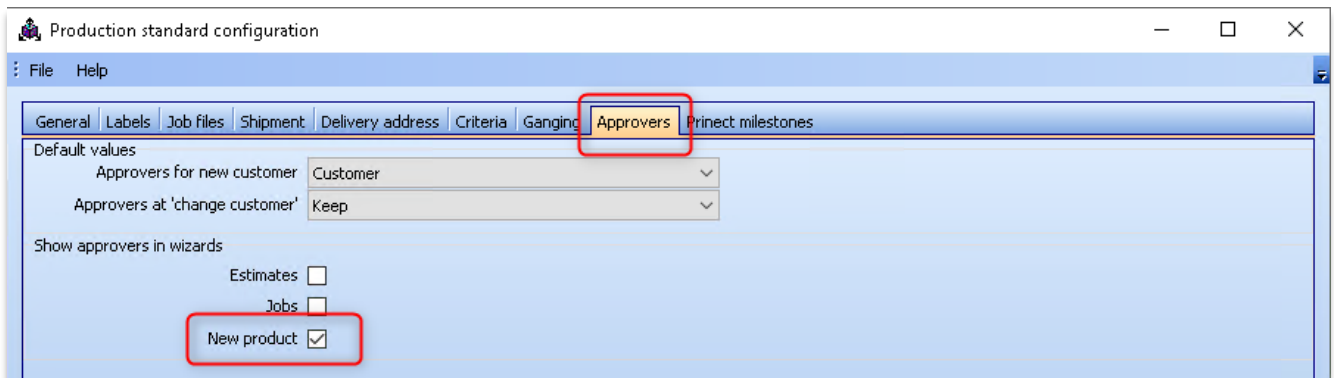
Benefits:

- Reduction of touchpoints
- Consistent integration

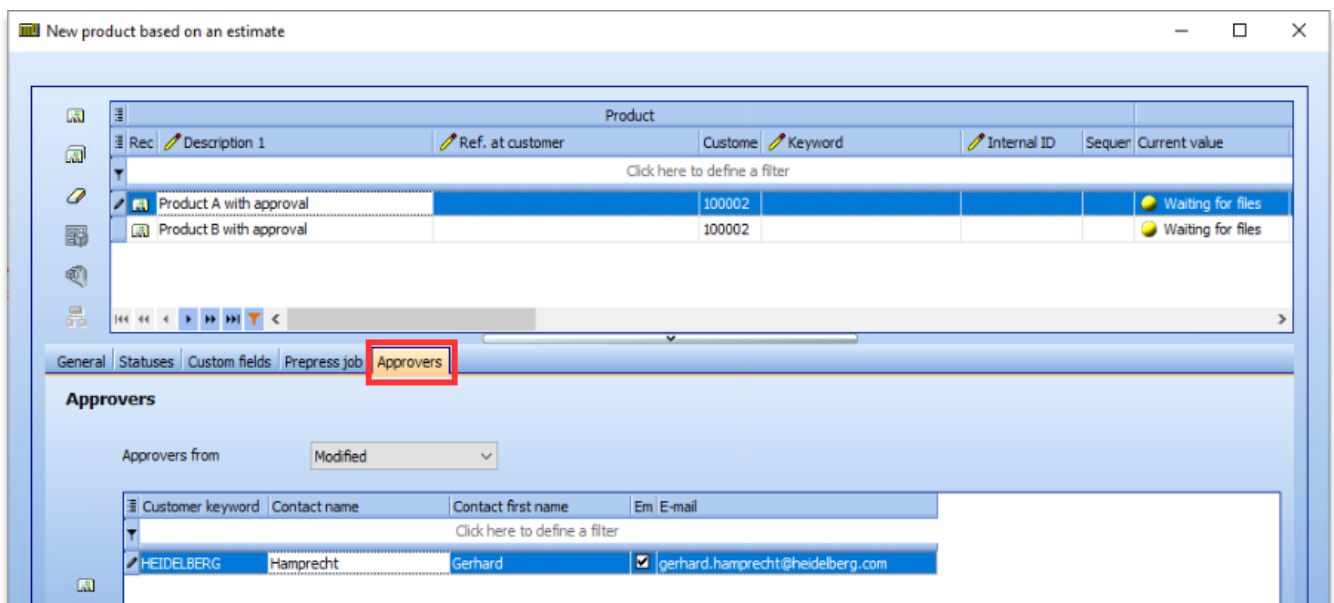
Details on this new feature are also available in the [Prinect Online Help V7.32](#).

4.2 Add approver selection to product wizard

In order to improve the approval process for products, a selection of approvers has been added on the product level. If a product is created, an additional screen appears for selecting the approvers in the wizard. To activate the approver selection for product creation, you need to go to Parameters > General Parameters > Calculation and production > Production Standard Configuration > Approvers.



If multiple products are added, an additional tab is added.



Benefits:

- Improved approval workflow in the product workflow

Details on this new feature are also available in the [Prinect Online Help V7.32](#).

5 General improvements for version 7.32 – CERM Online Help

In addition to the above mentioned improvements for the version 7.32 the other software segments / modules of Prinect Business Manager are improved as well. In this Product Information we would like to point out that this document is just a summary of the Prinect Business Manager enhancements with focus on the commercial / mixed commercial part.

Listed below you can find an excerpt of important general changes in version 7.32:

- All **mobile applications** have been reworked and aligned, resulting in the same functionality but with an improved user experience. For some mobile applications there is a significant change in design and use. More info in the below topics. We recommend to do some testing to get the hang of it.
 - Put tools in a stock location: only 1 scanning area, no prefixes required.
 - Put Semi-finished goods (Job) in a stock location: only 1 scanning area, no prefixes required.
 - Pick SKU (mobile): step-by-step plan.
 -
- **Microsoft ODBC driver 18 for SQL server**
As from v7.32, there is a change in the way the CERM7 software connects to the SQL database.
 - Up to v7.31, FireDAC searches for a suitable driver in the following order:
 - (1) SQL Server Native Client,
 - (2) ODBC Driver 17,
 - (3) SQL Server driver (not suitable for CERM7). As Microsoft has ended the SQL Server Native Client, this driver must be replaced by Microsoft ODBC Driver 17 or 18 for SQL server.
 - As from v7.32, FireDAC searches for a suitable driver in a different order:
 - (1) ODBC Driver 18,
 - (2) ODBC Driver 17,
 - (3) SQL Server Native Client (EOL),
 - (4) SQL Server driver (not suitable for CERM7)

To get an impression of the complete list of enhancements, please use the following link to the CERM Online help:

[General news for Prinect Business Manager version 7.32.](#)