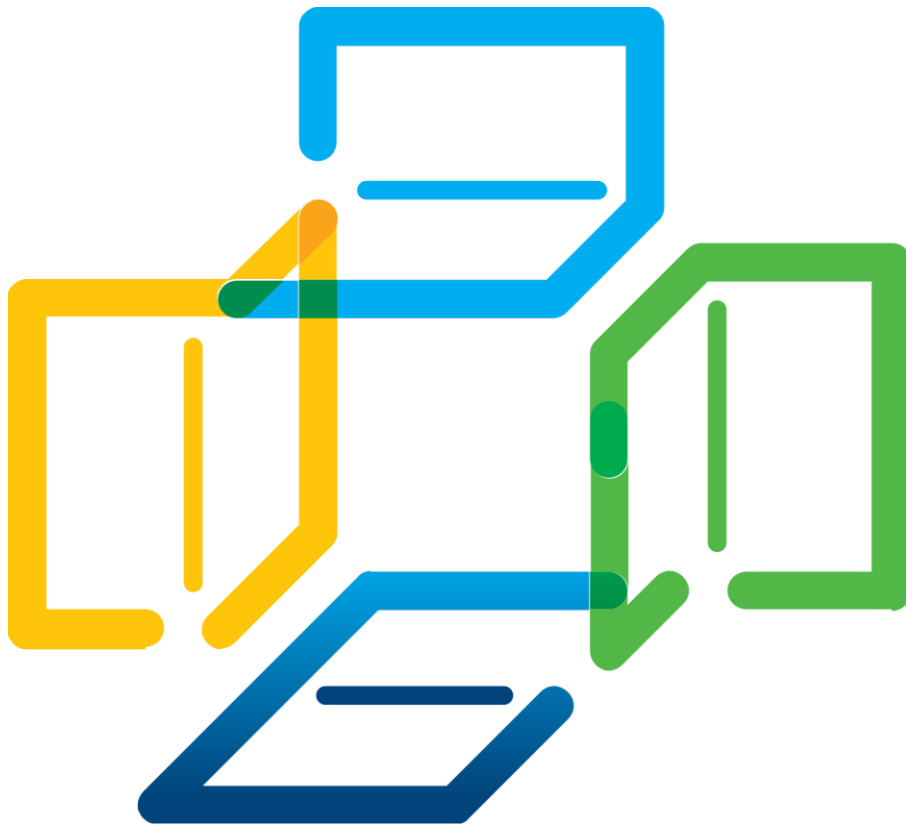


# Product Information

## **Prinect Package Designer**



April 2025

---

# Summary

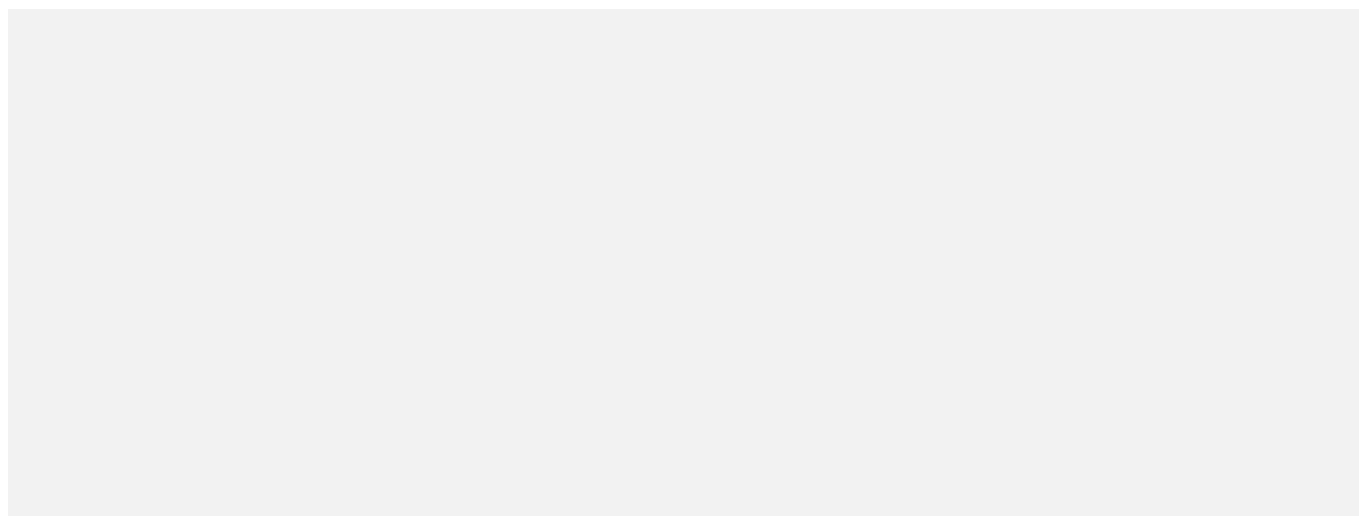
Of the 5 senses, sight is by far the most important one. It is estimated that 70% of all important information is perceived by the eye. For this reason, a whole series of functionalities in the Prinect Package Designer aim at visualization during the packaging development!

With the move to Prinect CR we also have continuous improvements that are implemented in Prinect Packaging Designer. This has now led to some major changes that will become available as of media set Prinect CR 5055.00.7

By consolidating the preferences that scattered at different places in Prinect Package Designer, we bring together what belongs together. One main preference panel to improve the user experience.

## **Key changes at a glance:**

- New centralized preferences menu with a search function.
- Setting custom drafting colors.



# Content

<b>Key changes in Prinect Package Designer</b>	<b>4</b>
<b>1 Centralized preferences – ease of use</b>	<b>4</b>
<b>2 Drafting Colors - ease of use</b>	<b>6</b>
<b>3 Units and alternative dimensions – new feature</b>	<b>8</b>
<b>4 Useful information from the engine room</b>	<b>9</b>
 <b>Availability and Positioning</b>	 <b>10</b>

# Key changes in Prinect Package Designer

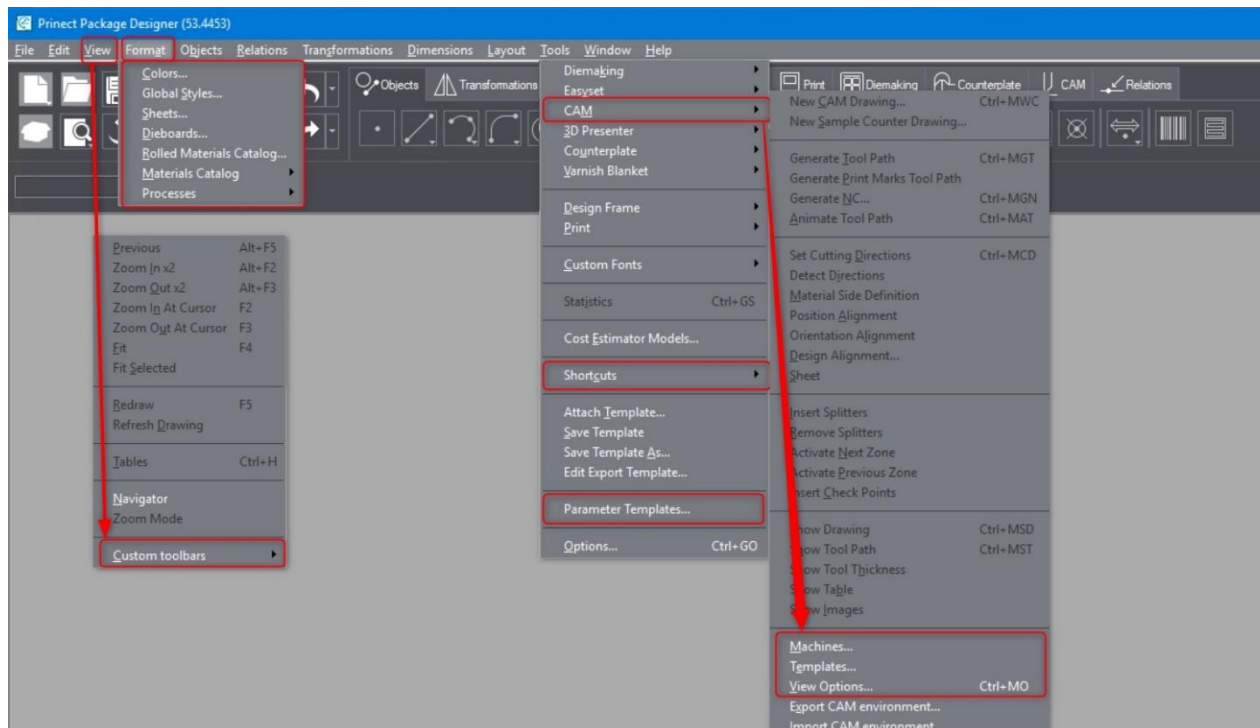
## 1 Centralized preferences – ease of use

Why Prinect Package Designer? The process of packaging development is a creative and central process step in folding carton production. To create a functional and at the same time innovative packaging a combination of process knowhow, the life cycle of the box and its value chain, production knowledge about the production process and a portion creativity. HEIDELBERG supports this process with its CAD software Prinect Package Designer!

Packaging development is an iterative process. Starting from the first drafts through the different development stages to achieve the final folding carton box. In most cases is this the result of the constant communication between the customer and the CAD department. Samples and mock-ups make up for a considerable amount of the communication. These mock-ups and samples are a key element in the communication. They give an impression of haptics, stability, proportion or simply whether the box works.

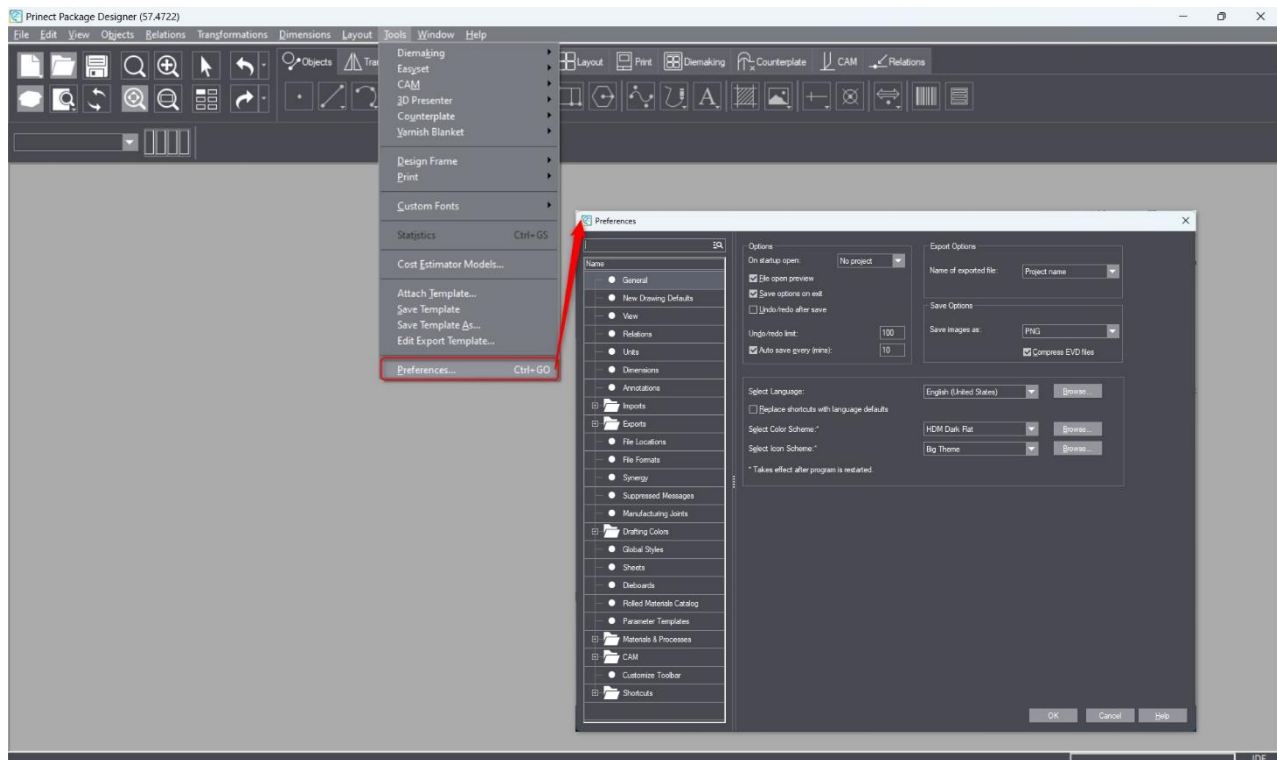
### 1.1 Preferences – general

Since the launch of Prinect Packaging Designer the software has grown in its functionality. This is a logic consequence off addressing market needs through the addition of new features and functionalities over time. Of course, this also comes with the need to set certain preferences. This resulted in the fact that we had different locations where a user could adjust settings as displayed in the Picture 1 below.



Picture 1: Places where settings could be found in previous versions of Prinect Package Designer.

With all these different settings options scattered over the user interface, it was confusing to keep track where what setting can be changed. This resulted in the creation of a new preferences menu. This centralizes all preference settings where they belong together. This is a significant reduction of complexity for new operators starting with Prinect Package Designer.

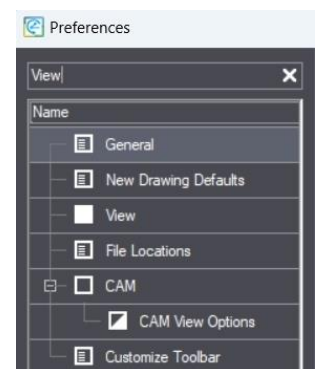


Picture 2: New preferences menu centralizing all preferences and settings.

### 1.2 Searching preferences

Of course, with all preferences in on place this could give one an overwhelming feeling, especially when you just want to change one setting. If you know what you are looking for, then you can also use the new search functionality. Here you can type in the preference you would like to change. When you start typing then the preferences with a match are listed. This is illustrated by Picture 3 where we are searching for the 'View' settings.

'View' is a general preference that can be found for multiple functions in Prinect Package Designer. Therefore, you will have multiple search results that are displayed in the preference menu. To help the operator to find the intended preference, a visual indication was added. This way you can see immediately what type of search result you have.



Picture 3: searching in preferences



the term "View" has been found in the tree list only (e.g. General)

a 100% match in the list

matches in a sub-branch

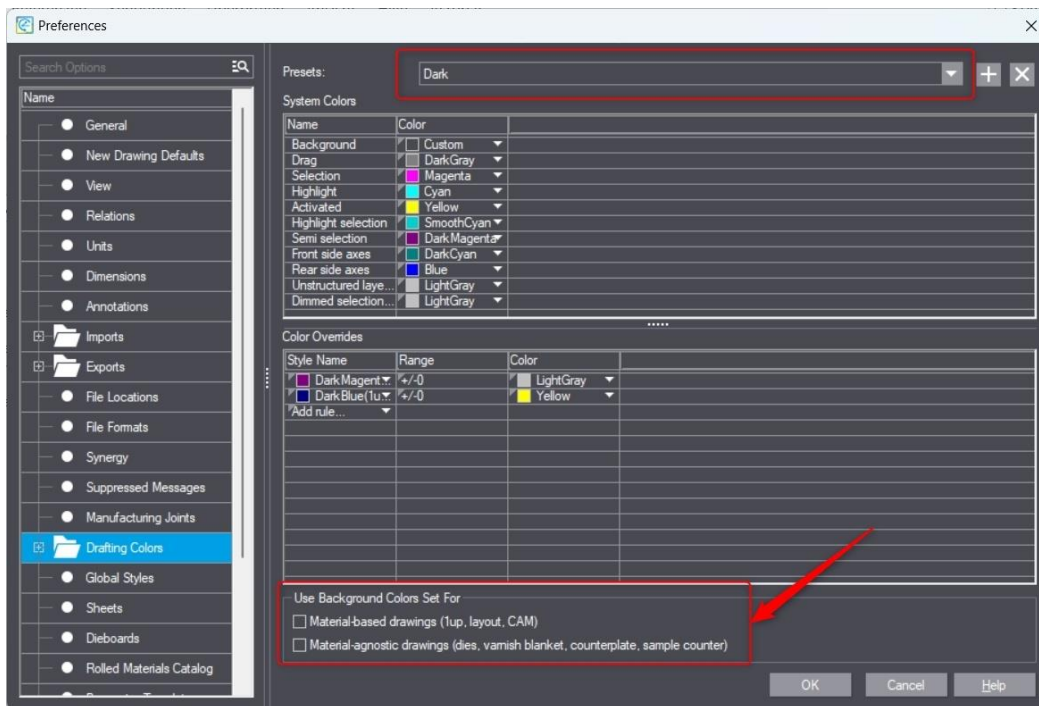
not a match in the node, but as in our example there is match in the sub structure (e.g. CAM).

## 2 Drafting Colors - ease of use

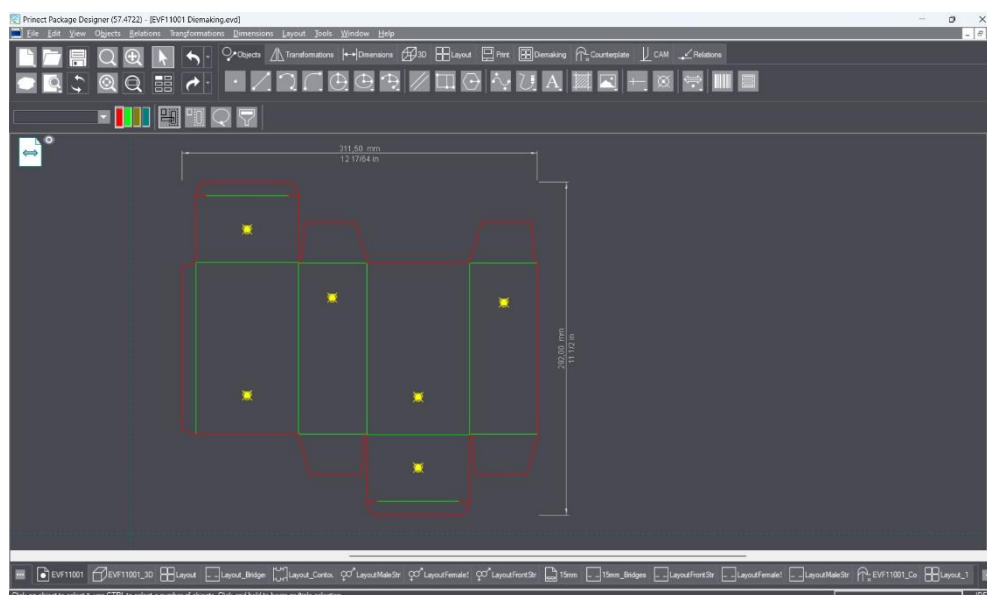
When it comes down to drafting, we have 2 new elements:

1. Settings to switch the canvas from white to the dark are moved from two locations into the new preferences.
2. You can define custom colors for line types. The colors are mapped to the specified color for display.

In the dark mode you can define in which context you want the canvas to be in the dark color as shown in Picture 4. The result of enabling these settings is shown in Picture 5 showing the standard colors for the different line types.

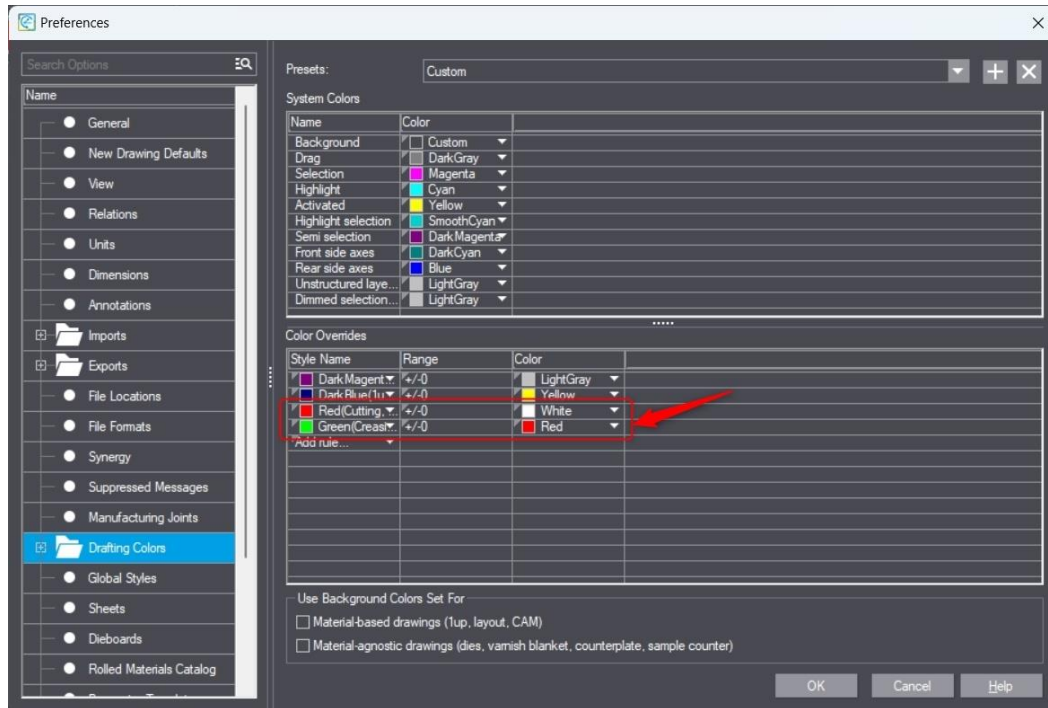


Picture 4: Preference setting to switch the canvas color.

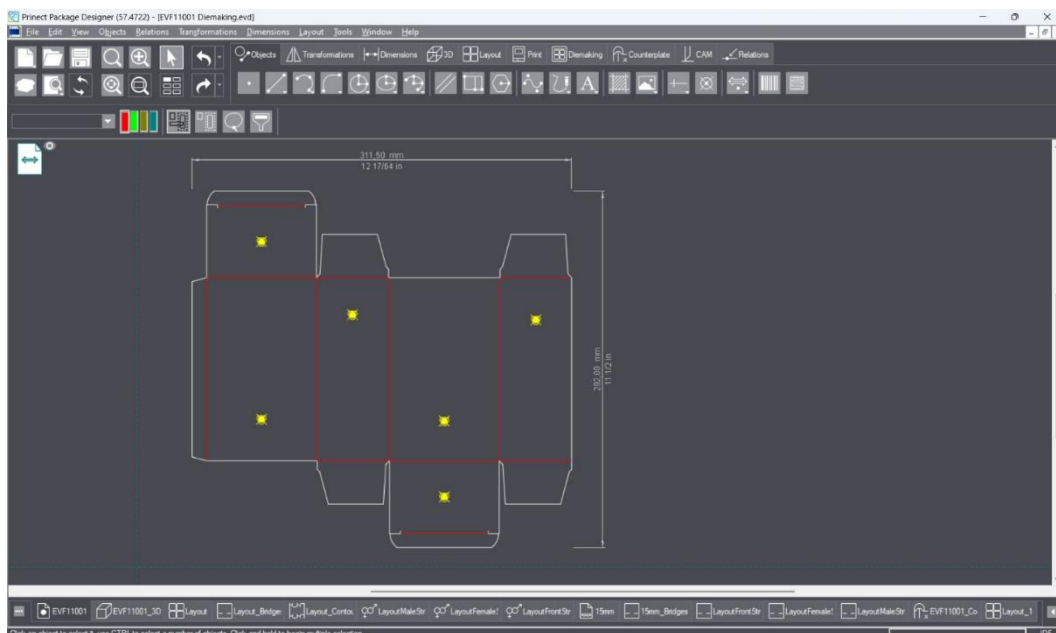


Picture 5: dark canvas when using Prinect Package Designer.

In the preferences you can define how these standard colors can be mapped to custom colors. E.g. in the example below in Picture 6, we changed the display color for the cutting and creasing line types. As the colors are only mapped for display, the actual line type is not changed. As a result, this will not cause conflicts or issues when opening the same file in another Prinect Package Designer with the standard settings or in another CAD application.



Picture 6: Setting custom line colors for display in Prinect Package Designer.



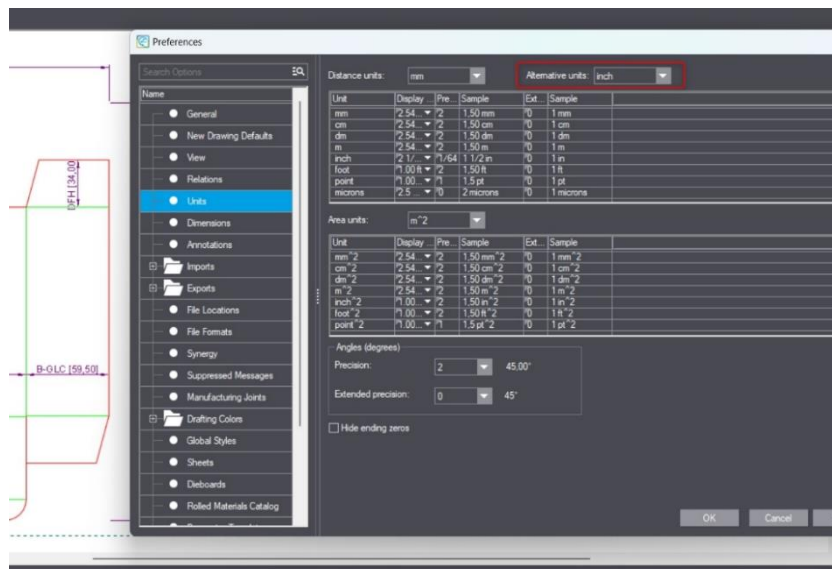
Picture 7: Result when setting custom colors for display of line types.

### 3 Units and alternative dimensions – new feature

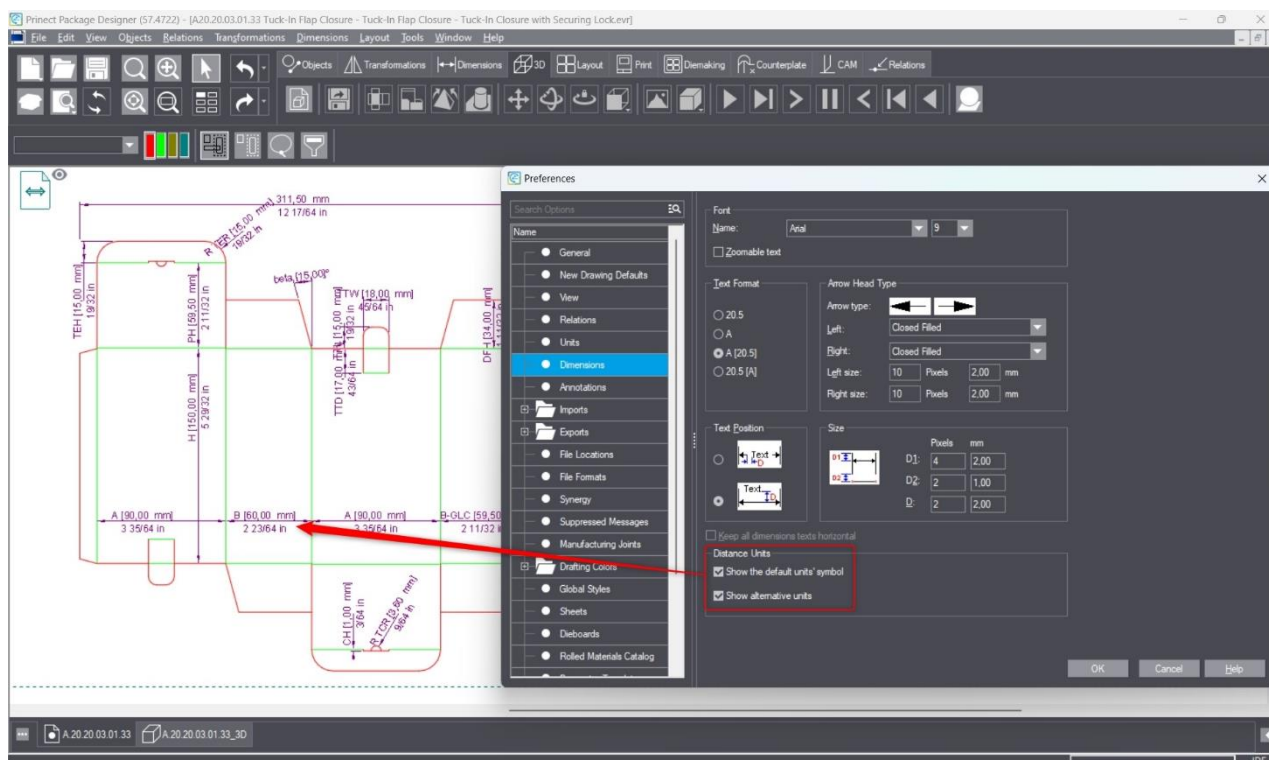
Folding carton boxes can have a basic straight forward or very complex structural design. In both cases communication is key especially when it comes down to the dimensions. It is normal that you can set your preferred units. E.g. metrical or imperial. Today we live in a global world, and you might have customers that use another unit then what you are used to. This means you need to convert and an increased risk of miscommunication. With the new version of Prinect Package Designer this is not a problem anymore.

In the Preferences you can set your units as you like and in addition you can also set up an alternative unit. This way the software does the units conversions for you. This setting can be done in the preferences as shown in Picture 8.

As this information is available it is also possible to have both units displayed on the canvas. This allows a smooth communication when showing the structural design during a meeting. Each party can see the dimension on the drawing in the units they are used to work with as shown in Picture 9.



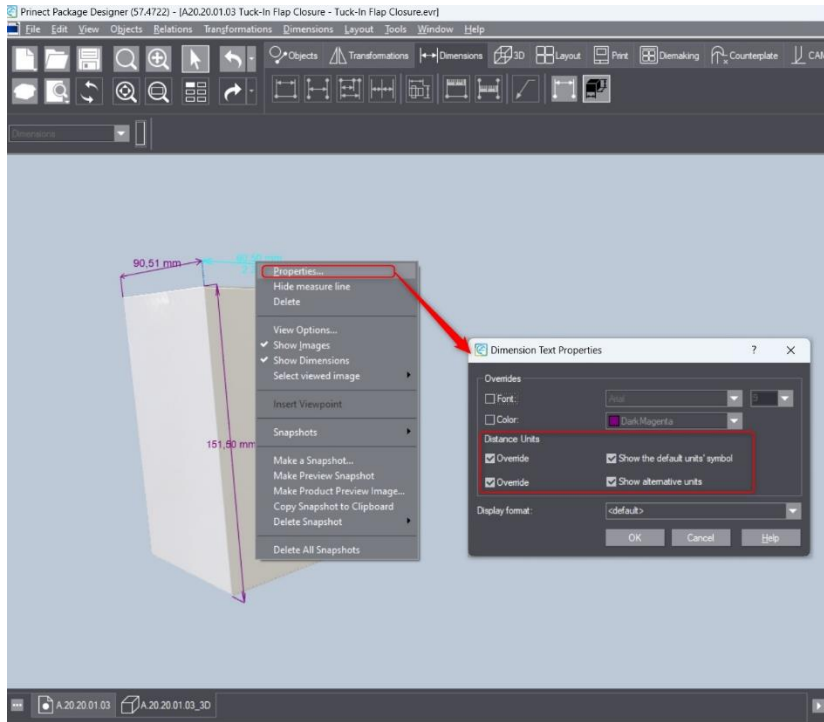
Picture 8: defining the alternative units.



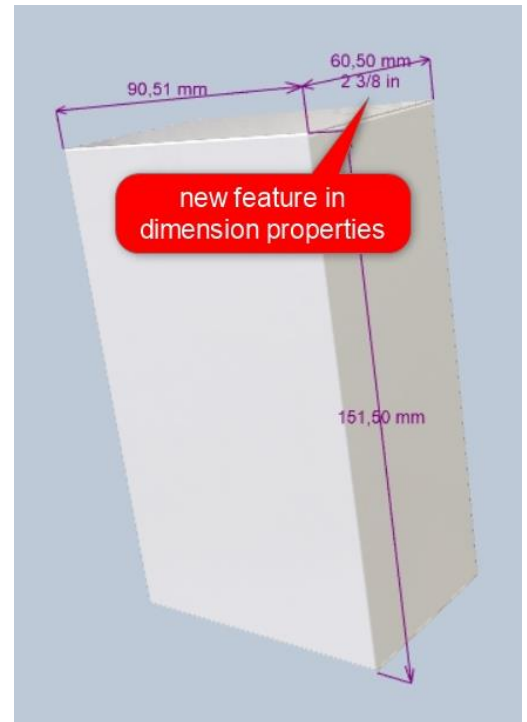
Picture 9: display alternative units on the canvas.



Having the dimensions displayed on the canvas is already a big help for communication. To round off this new feature you are also able to display these dimensions with the 3D models. In the 3D view you have the liberty to decide for each dimension that is displayed if you want to display the alternative unit. By using multi select you can also change the setting for all dimensions at once. How to set this is shown in Picture 10. The result is displayed in Picture 11.



Picture 10: Making the alternative unit to visible in the 3D visualization.



Picture 11: 3D model with alternative dimension visible.

## 4 Useful information from the engine room

In the Layout Wizard, missing tooltips for the steps 2, 3, and 4 were added.

There were some inconsistencies in the Japanese translations.

- Issue with the incomplete translations in the Packaging Library Index was resolved.
- Issue with the incomplete translation of Synergy components was resolved.

# Availability and Positioning

The latest version of Prinect Package Designer will be available from May 2025 on as of media set Prinect CR 5055.00.7. The Prinect Package Designer was converted into a subscription model and can be added to Prinect Production Packaging as an additional option for a monthly fee. This results in a coherent, consistent packaging solution. Starting with the development of folding cartons boxes, through pre-press including layout creation, to plate output and presetting of the equipment.

The production of die-tools is a complex task that is often outsourced to third parties. In the future, we will offer the Diemaker option as a separate option in Prinect Package Designer. This means that customers who need and use this functionality in Prinect Package Designer will not have to miss these functionalities in the future. Attention, only the Diemaker module is offered as an option. The Synergy and Illustrator Connect modules will continue to be part of Prinect Packaging Designer.

**Good to know:** The use of the Package Designer does not necessarily require a HEIDELBERG prepress workflow! The Prinect Package Designer can also be used in combination with a third-party workflow by using the standardized output formats. Since the Prinect Package Designer does not come standalone, but in a package with Prinect Production Packaging, the user is free to use the included prepress workflow or to stick with an already established workflow. In the future, it may make sense to switch to Prinect Production Packaging. Especially since Prinect Production Packaging covers all the requirements for a prepress workflow – and beyond.

If you have any questions about the Prinect Package Designer, please contact:

Simon Top  
Productmanagement-Software  
(PA-PM-SW)

Heidelberger Druckmaschinen AG  
Gutenbergring  
69168 Wiesloch  
Germany

Phone: +49 6222 82-4518  
Mobile: +49 171 129 3370  
[simon.top@heidelberg.com](mailto:simon.top@heidelberg.com)